

# RENEE WILKINS



HEIGHT 175 / 5'9" | BUST 82 / 32,5 / C | WAIST 61 / 24 | HIPS 89 / 35" | HAIR BROWN | EYES BROWN  
DRESS 8 | SHOES 7 AU / 38 EU

kult  
AUSTRALIA

# RENEE WILKINS



HEIGHT 175 / 5'9" | BUST 82 / 32,5 / C | WAIST 61 / 24 | HIPS 89 / 35" | HAIR BROWN | EYES BROWN  
DRESS 8 | SHOES 7 AU / 38 EU

kult  
AUSTRALIA

# RENEE WILKINS



HEIGHT 175 / 5'9" | BUST 82 / 32,5 / C | WAIST 61 / 24 | HIPS 89 / 35" | HAIR BROWN | EYES BROWN  
DRESS 8 | SHOES 7 AU / 38 EU

kult  
AUSTRALIA

# RENEE WILKINS



HEIGHT 175 / 5'9" | BUST 82 / 32,5 / C | WAIST 61 / 24 | HIPS 89 / 35" | HAIR BROWN | EYES BROWN

DRESS 8 | SHOES 7 AU / 38 EU

kult  
AUSTRALIA

# RENEE WILKINS



HEIGHT 175 / 5'9" | BUST 82 / 32,5 / C | WAIST 61 / 24 | HIPS 89 / 35" | HAIR BROWN | EYES BROWN  
DRESS 8 | SHOES 7 AU / 38 EU

kult  
AUSTRALIA

# RENEE WILKINS



bones with Renée ([@renwilks](#)) Photography by James K Lowe  
[@nesklowe](#)) Art Direction by Nicole Miller-Wong ([@nicolemillerwong](#))  
: wears Daniela Alves da Silva Santos knit top ([@dani\\_saints](#))

HEIGHT 175 / 5'9" | BUST 82 / 32,5 / C | WAIST 61 / 24 | HIPS 89 / 35" | HAIR BROWN | EYES BROWN  
DRESS 8 | SHOES 7 AU / 38 EU

kult  
AUSTRALIA

# RENEE WILKINS



HEIGHT 175 / 5'9" | BUST 82 / 32,5 / C | WAIST 61 / 24 | HIPS 89 / 35" | HAIR BROWN | EYES BROWN  
DRESS 8 | SHOES 7 AU / 38 EU

kult  
AUSTRALIA

# RENEE WILKINS



HEIGHT 175 / 5'9" | BUST 82 / 32,5 / C | WAIST 61 / 24 | HIPS 89 / 35" | HAIR BROWN | EYES BROWN  
DRESS 8 | SHOES 7 AU / 38 EU

kult  
AUSTRALIA

# RENEE WILKINS



HEIGHT 175 / 5'9" | BUST 82 / 32,5 / C | WAIST 61 / 24 | HIPS 89 / 35" | HAIR BROWN | EYES BROWN  
DRESS 8 | SHOES 7 AU / 38 EU

kult  
AUSTRALIA

# RENEE WILKINS



HEIGHT 175 / 5'9" | BUST 82 / 32,5 / C | WAIST 61 / 24 | HIPS 89 / 35" | HAIR BROWN | EYES BROWN  
DRESS 8 | SHOES 7 AU / 38 EU

kult  
AUSTRALIA

# RENEE WILKINS



HEIGHT 175 / 5'9" | BUST 82 / 32,5 / C | WAIST 61 / 24 | HIPS 89 / 35" | HAIR BROWN | EYES BROWN

DRESS 8 | SHOES 7 AU / 38 EU

kult  
AUSTRALIA

# RENEE WILKINS



HEIGHT 175 / 5'9" | BUST 82 / 32,5 / C | WAIST 61 / 24 | HIPS 89 / 35" | HAIR BROWN | EYES BROWN  
DRESS 8 | SHOES 7 AU / 38 EU

kult  
AUSTRALIA

# RENEE WILKINS



HEIGHT 175 / 5'9" | BUST 82 / 32,5 / C | WAIST 61 / 24 | HIPS 89 / 35" | HAIR BROWN | EYES BROWN  
DRESS 8 | SHOES 7 AU / 38 EU

kult  
AUSTRALIA

# RENEE WILKINS



HEIGHT 175 / 5'9" | BUST 82 / 32,5 / C | WAIST 61 / 24 | HIPS 89 / 35" | HAIR BROWN | EYES BROWN  
DRESS 8 | SHOES 7 AU / 38 EU

kult  
AUSTRALIA

# RENEE WILKINS



HEIGHT 175 / 5'9" | BUST 82 / 32,5 / C | WAIST 61 / 24 | HIPS 89 / 35" | HAIR BROWN | EYES BROWN

DRESS 8 | SHOES 7 AU / 38 EU

kult  
AUSTRALIA

# RENEE WILKINS



HEIGHT 175 / 5'9" | BUST 82 / 32,5 / C | WAIST 61 / 24 | HIPS 89 / 35" | HAIR BROWN | EYES BROWN  
DRESS 8 | SHOES 7 AU / 38 EU

kult  
AUSTRALIA

# RENEE WILKINS



Collaboration with Renée ([@renwilks](#))  
Photography by James K Lowe ([@jamesklowe](#)) Art Direction by Nicole  
Miller-Wong ([@nicolemillerwong](#)) Shot at  
Studio City (Brooklyn, New York)

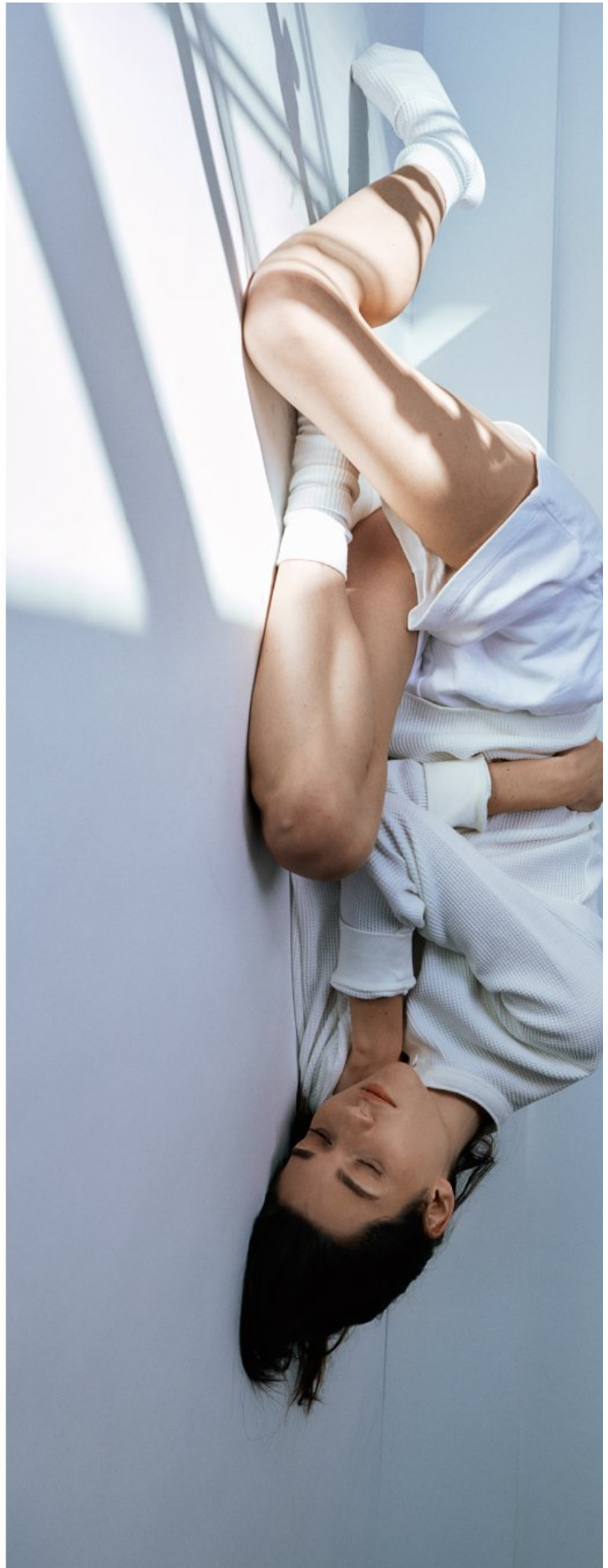
HEIGHT 175 / 5'9" | BUST 82 / 32,5 / C | WAIST 61 / 24 | HIPS 89 / 35" | HAIR BROWN | EYES BROWN  
DRESS 8 | SHOES 7 AU / 38 EU

kult  
AUSTRALIA

# RENEE WILKINS



*Renée shot at home (Brooklyn, New York)*



HEIGHT 175 / 5'9" | BUST 82 / 32,5 / C | WAIST 61 / 24 | HIPS 89 / 35" | HAIR BROWN | EYES BROWN  
DRESS 8 | SHOES 7 AU / 38 EU

kult  
AUSTRALIA

# RENEE WILKINS



HEIGHT 175 / 5'9" | BUST 82 / 32,5 / C | WAIST 61 / 24 | HIPS 89 / 35" | HAIR BROWN | EYES BROWN

DRESS 8 | SHOES 7 AU / 38 EU

kult  
AUSTRALIA

# RENEE WILKINS



HEIGHT 175 / 5'9" | BUST 82 / 32,5 / C | WAIST 61 / 24 | HIPS 89 / 35" | HAIR BROWN | EYES BROWN  
DRESS 8 | SHOES 7 AU / 38 EU

kult  
AUSTRALIA

# RENEE WILKINS



HEIGHT 175 / 5'9" | BUST 82 / 32,5 / C | WAIST 61 / 24 | HIPS 89 / 35" | HAIR BROWN | EYES BROWN  
DRESS 8 | SHOES 7 AU / 38 EU

kult  
AUSTRALIA

# RENEE WILKINS



HEIGHT 175 / 5'9" | BUST 82 / 32,5 / C | WAIST 61 / 24 | HIPS 89 / 35" | HAIR BROWN | EYES BROWN  
DRESS 8 | SHOES 7 AU / 38 EU

kult  
AUSTRALIA

# RENEE WILKINS



HEIGHT 175 / 5'9" | BUST 82 / 32,5 / C | WAIST 61 / 24 | HIPS 89 / 35" | HAIR BROWN | EYES BROWN

DRESS 8 | SHOES 7 AU / 38 EU

kult  
AUSTRALIA

# RENEE WILKINS



HEIGHT 175 / 5'9" | BUST 82 / 32,5 / C | WAIST 61 / 24 | HIPS 89 / 35" | HAIR BROWN | EYES BROWN  
DRESS 8 | SHOES 7 AU / 38 EU

kult  
AUSTRALIA