

JOEY GOULD



HEIGHT 188 / 6'2" | CHEST 97 / 38 | WAIST 80 / 31.5 | HAIR BROWN | EYES HAZEL | SHOES 44.5 / 10.5
SUIT 50 / 40 | COLLAR 39 / 15.5

kult
AUSTRALIA

JOEY GOULD



HEIGHT 188 / 6'2" | CHEST 97 / 38 | WAIST 80 / 31.5 | HAIR BROWN | EYES HAZEL | SHOES 44.5 / 10.5
SUIT 50 / 40 | COLLAR 39 / 15.5

kult
AUSTRALIA

JOEY GOULD



HEIGHT 188 / 6'2" | CHEST 97 / 38 | WAIST 80 / 31.5 | HAIR BROWN | EYES HAZEL | SHOES 44.5 / 10.5
SUIT 50 / 40 | COLLAR 39 / 15.5

kult
AUSTRALIA

JOEY GOULD



HEIGHT 188 / 6'2" | CHEST 97 / 38 | WAIST 80 / 31.5 | HAIR BROWN | EYES HAZEL | SHOES 44.5 / 10.5
SUIT 50 / 40 | COLLAR 39 / 15.5

kult
AUSTRALIA

JOEY GOULD



HEIGHT 188 / 6'2" | CHEST 97 / 38 | WAIST 80 / 31.5 | HAIR BROWN | EYES HAZEL | SHOES 44.5 / 10.5
SUIT 50 / 40 | COLLAR 39 / 15.5

kult
AUSTRALIA

JOEY GOULD



HEIGHT 188 / 6'2" | CHEST 97 / 38 | WAIST 80 / 31.5 | HAIR BROWN | EYES HAZEL | SHOES 44.5 / 10.5
SUIT 50 / 40 | COLLAR 39 / 15.5

kult
AUSTRALIA

JOEY GOULD



HEIGHT 188 / 6'2" | CHEST 97 / 38 | WAIST 80 / 31.5 | HAIR BROWN | EYES HAZEL | SHOES 44.5 / 10.5
SUIT 50 / 40 | COLLAR 39 / 15.5

kult
AUSTRALIA

JOEY GOULD



HEIGHT 188 / 6'2" | CHEST 97 / 38 | WAIST 80 / 31.5 | HAIR BROWN | EYES HAZEL | SHOES 44.5 / 10.5
SUIT 50 / 40 | COLLAR 39 / 15.5

kult
AUSTRALIA

JOEY GOULD



HEIGHT 188 / 6'2" | CHEST 97 / 38 | WAIST 80 / 31.5 | HAIR BROWN | EYES HAZEL | SHOES 44.5 / 10.5
SUIT 50 / 40 | COLLAR 39 / 15.5

kult
AUSTRALIA

JOEY GOULD



HEIGHT 188 / 6'2" | CHEST 97 / 38 | WAIST 80 / 31.5 | HAIR BROWN | EYES HAZEL | SHOES 44.5 / 10.5
SUIT 50 / 40 | COLLAR 39 / 15.5

kult
AUSTRALIA

JOEY GOULD



HEIGHT 188 / 6'2" | CHEST 97 / 38 | WAIST 80 / 31.5 | HAIR BROWN | EYES HAZEL | SHOES 44.5 / 10.5
SUIT 50 / 40 | COLLAR 39 / 15.5

kult
AUSTRALIA

JOEY GOULD



HEIGHT 188 / 6'2" | CHEST 97 / 38 | WAIST 80 / 31.5 | HAIR BROWN | EYES HAZEL | SHOES 44.5 / 10.5
SUIT 50 / 40 | COLLAR 39 / 15.5

kult
AUSTRALIA

JOEY GOULD



HEIGHT 188 / 6'2" | CHEST 97 / 38 | WAIST 80 / 31.5 | HAIR BROWN | EYES HAZEL | SHOES 44.5 / 10.5
SUIT 50 / 40 | COLLAR 39 / 15.5

kult
AUSTRALIA

JOEY GOULD



HEIGHT 188 / 6'2" | CHEST 97 / 38 | WAIST 80 / 31.5 | HAIR BROWN | EYES HAZEL | SHOES 44.5 / 10.5
SUIT 50 / 40 | COLLAR 39 / 15.5

kult
AUSTRALIA

JOEY GOULD



HEIGHT 188 / 6'2" | CHEST 97 / 38 | WAIST 80 / 31.5 | HAIR BROWN | EYES HAZEL | SHOES 44.5 / 10.5
SUIT 50 / 40 | COLLAR 39 / 15.5

kult
AUSTRALIA

JOEY GOULD



HEIGHT 188 / 6'2" | CHEST 97 / 38 | WAIST 80 / 31.5 | HAIR BROWN | EYES HAZEL | SHOES 44.5 / 10.5
SUIT 50 / 40 | COLLAR 39 / 15.5

kult
AUSTRALIA

JOEY GOULD



HEIGHT 188 / 6'2" | CHEST 97 / 38 | WAIST 80 / 31.5 | HAIR BROWN | EYES HAZEL | SHOES 44.5 / 10.5
SUIT 50 / 40 | COLLAR 39 / 15.5

kult
AUSTRALIA

JOEY GOULD

PAUL SMITH
No tie? No
worries. This set
is slick enough
without one.

Jacket, \$119, chinos, \$439,
and shirt, \$359.

FOLLOW SUIT

Whether you're after masterful tailoring for the racing carnival or
summer wedding circuit, these suits are on the money.

HEIGHT 188 / 6'2" | CHEST 97 / 38 | WAIST 80 / 31.5 | HAIR BROWN | EYES HAZEL | SHOES 44.5 / 10.5

SUIT 50 / 40 | COLLAR 39 / 15.5

kult
AUSTRALIA

JOEY GOULD

HUGO BOSS
Mismatched separates
are especially chic
in a super-classic
palette of black,
white and grey.

Jacket, \$699, trousers, \$229, shirt, \$179,
and 'Barnabie' belt, \$179.



TOMMY HILFINGER
In perfect-fit slimline
black, this look will be
high on your summer
suit rotation.

Jacket, \$549, trousers, \$250, and shirt, \$119.
CALVIN KLEIN tie, \$69.95. BUCKLE
'Marcel' belt, \$54.95. X DAVID JONES
COLLECTION socks, \$12.95. JULIUS
MARLOW 'Logic' monk shoes, \$169.95.

HEIGHT 188 / 6'2" | CHEST 97 / 38 | WAIST 80 / 31.5 | HAIR BROWN | EYES HAZEL | SHOES 44.5 / 10.5
SUIT 50 / 40 | COLLAR 39 / 15.5

kult
AUSTRALIA

JOEY GOULD



SABA
Buttoned up
shirting and
waist-tie details
are a modern
approach to the
traditional Derby
Day dress code.

From left: 'Collins' twill suit jacket,
\$499, pants, \$249, and easy-care
shirt, \$149, JULIUS MARLOW
'Logic' monk shoes, \$169.95,
'Alisha' linen blazer, \$379,
and wide-leg pants, \$249.
X SOL SANA heels, \$199.95.

HEIGHT 188 / 6'2" | CHEST 97 / 38 | WAIST 80 / 31.5 | HAIR BROWN | EYES HAZEL | SHOES 44.5 / 10.5
SUIT 50 / 40 | COLLAR 39 / 15.5

kult
AUSTRALIA

JOEY GOULD

COUNTRY ROAD
light and relaxed
fitting that's
weekend friendly.

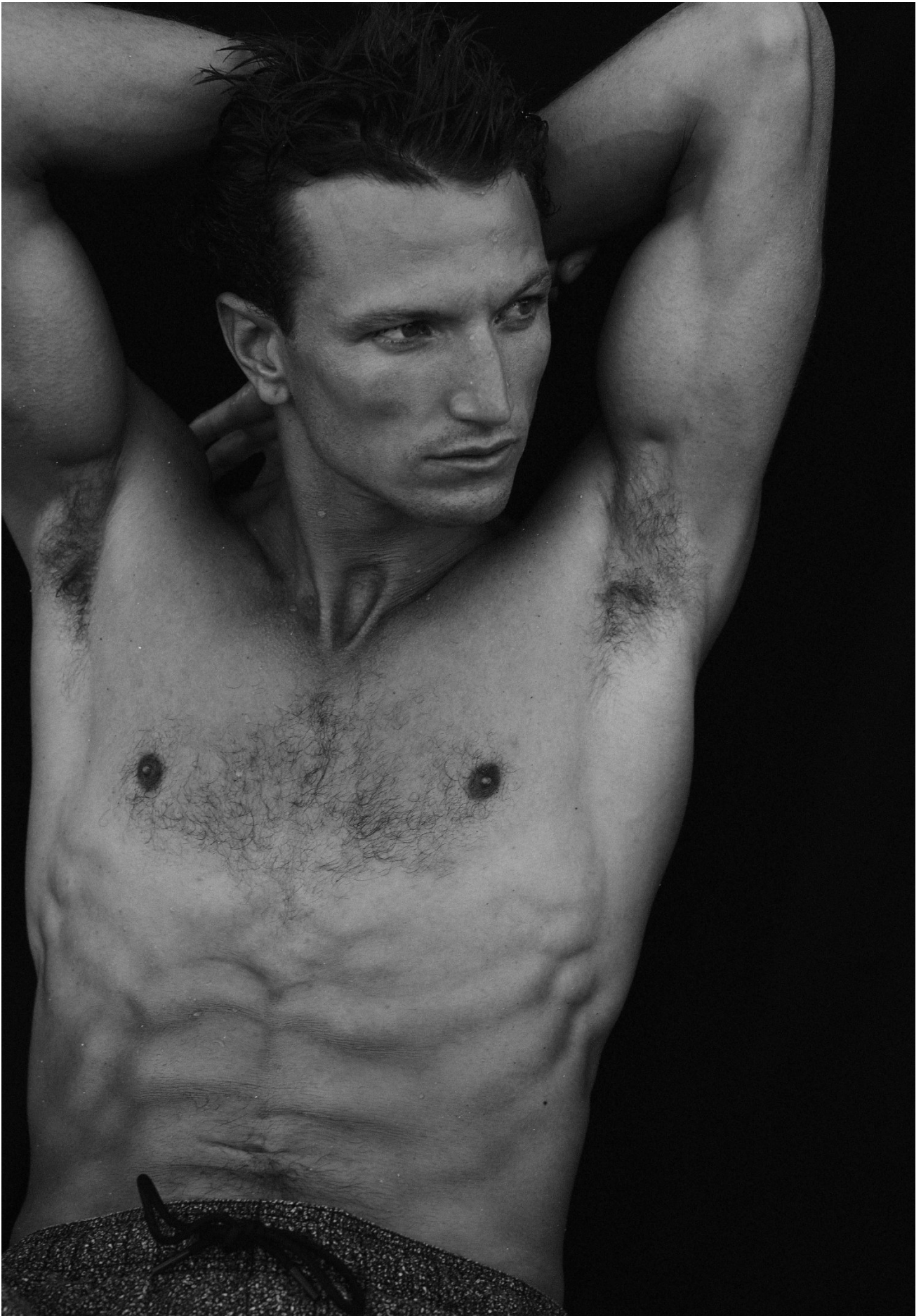
On left: X 'Reg' travel jacket, \$449,
X pants, \$199, X 'Pima' T-shirt,
\$95, X Linen pocket blazer, \$299,
wide-leg pants, \$199, and X 'Fiona'
tops, \$29.95.



HEIGHT 188 / 6'2" | CHEST 97 / 38 | WAIST 80 / 31.5 | HAIR BROWN | EYES HAZEL | SHOES 44.5 / 10.5
SUIT 50 / 40 | COLLAR 39 / 15.5

kult
AUSTRALIA

JOEY GOULD



HEIGHT 188 / 6'2" | CHEST 97 / 38 | WAIST 80 / 31.5 | HAIR BROWN | EYES HAZEL | SHOES 44.5 / 10.5
SUIT 50 / 40 | COLLAR 39 / 15.5

kult
AUSTRALIA

JOEY GOULD



HEIGHT 188 / 6'2" | CHEST 97 / 38 | WAIST 80 / 31.5 | HAIR BROWN | EYES HAZEL | SHOES 44.5 / 10.5

SUIT 50 / 40 | COLLAR 39 / 15.5

kult
AUSTRALIA

JOEY GOULD



HEIGHT 188 / 6'2" | CHEST 97 / 38 | WAIST 80 / 31.5 | HAIR BROWN | EYES HAZEL | SHOES 44.5 / 10.5
SUIT 50 / 40 | COLLAR 39 / 15.5

kult
AUSTRALIA

JOEY GOULD



HEIGHT 188 / 6'2" | CHEST 97 / 38 | WAIST 80 / 31.5 | HAIR BROWN | EYES HAZEL | SHOES 44.5 / 10.5
SUIT 50 / 40 | COLLAR 39 / 15.5

kult
AUSTRALIA

JOEY GOULD



HEIGHT 188 / 6'2" | CHEST 97 / 38 | WAIST 80 / 31.5 | HAIR BROWN | EYES HAZEL | SHOES 44.5 / 10.5
SUIT 50 / 40 | COLLAR 39 / 15.5

kult
AUSTRALIA

JOEY GOULD



HEIGHT 188 / 6'2" | CHEST 97 / 38 | WAIST 80 / 31.5 | HAIR BROWN | EYES HAZEL | SHOES 44.5 / 10.5
SUIT 50 / 40 | COLLAR 39 / 15.5

kult
AUSTRALIA

JOEY GOULD



HEIGHT 188 / 6'2" | CHEST 97 / 38 | WAIST 80 / 31.5 | HAIR BROWN | EYES HAZEL | SHOES 44.5 / 10.5
SUIT 50 / 40 | COLLAR 39 / 15.5

kult
AUSTRALIA

JOEY GOULD



HEIGHT 188 / 6'2" | CHEST 97 / 38 | WAIST 80 / 31.5 | HAIR BROWN | EYES HAZEL | SHOES 44.5 / 10.5
SUIT 50 / 40 | COLLAR 39 / 15.5

kult
AUSTRALIA

JOEY GOULD



*This page: Joey wears Prada
tee and wool blazer; Jac +
Jack wool half-zip jumper;
Nicholas Daley wool kilt.*

*Opposite: Grace wears
Maria ke Fisherman wool
jumper; Liberum wool shirt;
Christopher Eber coat*

HEIGHT 188 / 6'2" | CHEST 97 / 38 | WAIST 80 / 31.5 | HAIR BROWN | EYES HAZEL | SHOES 44.5 / 10.5
SUIT 50 / 40 | COLLAR 39 / 15.5

kult
AUSTRALIA

JOEY GOULD



Joey wears *Discovered* wool jumper; *Gucci* jeans. Billie wears *Gucci* shirt; *Vivienne Westwood* wool jumper; *Sportmax* wool dress and coat; *Miu Miu* denim skirt.

HEIGHT 188 / 6'2" | CHEST 97 / 38 | WAIST 80 / 31.5 | HAIR BROWN | EYES HAZEL | SHOES 44.5 / 10.5
SUIT 50 / 40 | COLLAR 39 / 15.5

kult
AUSTRALIA

JOEY GOULD



HEIGHT 188 / 6'2" | CHEST 97 / 38 | WAIST 80 / 31.5 | HAIR BROWN | EYES HAZEL | SHOES 44.5 / 10.5
SUIT 50 / 40 | COLLAR 39 / 15.5

kult
AUSTRALIA

JOEY GOULD



HEIGHT 188 / 6'2" | CHEST 97 / 38 | WAIST 80 / 31.5 | HAIR BROWN | EYES HAZEL | SHOES 44.5 / 10.5
SUIT 50 / 40 | COLLAR 39 / 15.5

kult
AUSTRALIA

JOEY GOULD



HEIGHT 188 / 6'2" | CHEST 97 / 38 | WAIST 80 / 31.5 | HAIR BROWN | EYES HAZEL | SHOES 44.5 / 10.5
SUIT 50 / 40 | COLLAR 39 / 15.5

kult
AUSTRALIA

JOEY GOULD



HEIGHT 188 / 6'2" | CHEST 97 / 38 | WAIST 80 / 31.5 | HAIR BROWN | EYES HAZEL | SHOES 44.5 / 10.5
SUIT 50 / 40 | COLLAR 39 / 15.5

kult
AUSTRALIA

JOEY GOULD



HEIGHT 188 / 6'2" | CHEST 97 / 38 | WAIST 80 / 31.5 | HAIR BROWN | EYES HAZEL | SHOES 44.5 / 10.5
SUIT 50 / 40 | COLLAR 39 / 15.5

kult
AUSTRALIA

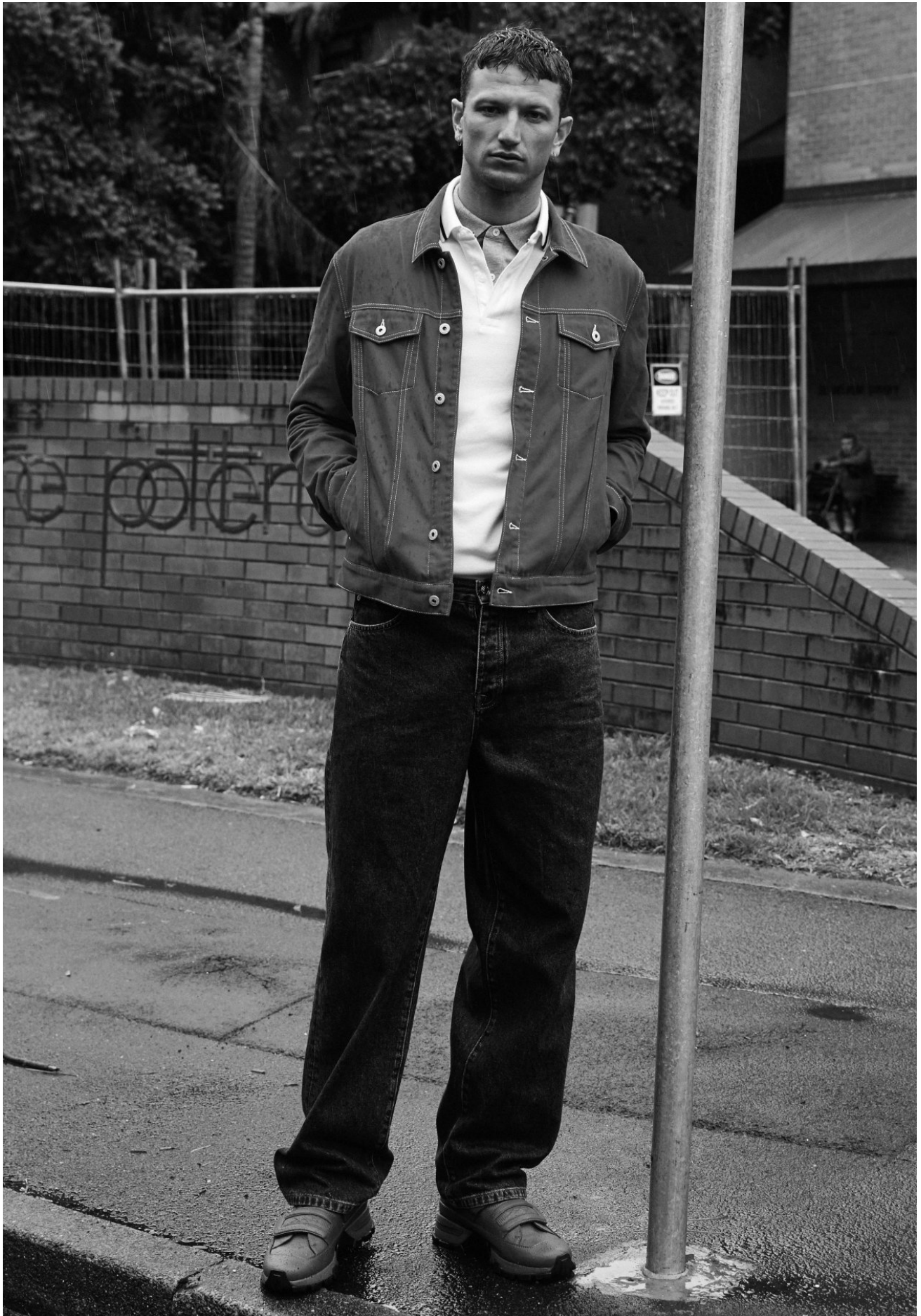
JOEY GOULD



HEIGHT 188 / 6'2" | CHEST 97 / 38 | WAIST 80 / 31.5 | HAIR BROWN | EYES HAZEL | SHOES 44.5 / 10.5
SUIT 50 / 40 | COLLAR 39 / 15.5

kult
AUSTRALIA

JOEY GOULD



HEIGHT 188 / 6'2" | CHEST 97 / 38 | WAIST 80 / 31.5 | HAIR BROWN | EYES HAZEL | SHOES 44.5 / 10.5
SUIT 50 / 40 | COLLAR 39 / 15.5

kult
AUSTRALIA

JOEY GOULD



HEIGHT 188 / 6'2" | CHEST 97 / 38 | WAIST 80 / 31.5 | HAIR BROWN | EYES HAZEL | SHOES 44.5 / 10.5
SUIT 50 / 40 | COLLAR 39 / 15.5

kult
AUSTRALIA

JOEY GOULD



HEIGHT 188 / 6'2" | CHEST 97 / 38 | WAIST 80 / 31.5 | HAIR BROWN | EYES HAZEL | SHOES 44.5 / 10.5
SUIT 50 / 40 | COLLAR 39 / 15.5

kult
AUSTRALIA

JOEY GOULD



HEIGHT 188 / 6'2" | CHEST 97 / 38 | WAIST 80 / 31.5 | HAIR BROWN | EYES HAZEL | SHOES 44.5 / 10.5
SUIT 50 / 40 | COLLAR 39 / 15.5

kult
AUSTRALIA

JOEY GOULD



Baby lamb/sheepskin jacket, \$18,510, and cashmere/silk jumper, \$1740, both by Hermès.

HEIGHT 188 / 6'2" | CHEST 97 / 38 | WAIST 80 / 31.5 | HAIR BROWN | EYES HAZEL | SHOES 44.5 / 10.5
SUIT 50 / 40 | COLLAR 39 / 15.5

kult
AUSTRALIA

JOEY GOULD



HEIGHT 188 / 6'2" | CHEST 97 / 38 | WAIST 80 / 31.5 | HAIR BROWN | EYES HAZEL | SHOES 44.5 / 10.5
SUIT 50 / 40 | COLLAR 39 / 15.5

kult
AUSTRALIA

JOEY GOULD



HEIGHT 188 / 6'2" | CHEST 97 / 38 | WAIST 80 / 31.5 | HAIR BROWN | EYES HAZEL | SHOES 44.5 / 10.5
SUIT 50 / 40 | COLLAR 39 / 15.5

kult
AUSTRALIA

JOEY GOULD



HEIGHT 188 / 6'2" | CHEST 97 / 38 | WAIST 80 / 31.5 | HAIR BROWN | EYES HAZEL | SHOES 44.5 / 10.5
SUIT 50 / 40 | COLLAR 39 / 15.5

kult
AUSTRALIA

JOEY GOULD



HEIGHT 188 / 6'2" | CHEST 97 / 38 | WAIST 80 / 31.5 | HAIR BROWN | EYES HAZEL | SHOES 44.5 / 10.5
SUIT 50 / 40 | COLLAR 39 / 15.5

kult
AUSTRALIA

JOEY GOULD



HEIGHT 188 / 6'2" | CHEST 97 / 38 | WAIST 80 / 31.5 | HAIR BROWN | EYES HAZEL | SHOES 44.5 / 10.5
SUIT 50 / 40 | COLLAR 39 / 15.5

kult
AUSTRALIA

JOEY GOULD



HEIGHT 188 / 6'2" | CHEST 97 / 38 | WAIST 80 / 31.5 | HAIR BROWN | EYES HAZEL | SHOES 44.5 / 10.5
SUIT 50 / 40 | COLLAR 39 / 15.5

kult
AUSTRALIA

JOEY GOULD



HEIGHT 188 / 6'2" | CHEST 97 / 38 | WAIST 80 / 31.5 | HAIR BROWN | EYES HAZEL | SHOES 44.5 / 10.5
SUIT 50 / 40 | COLLAR 39 / 15.5

kult
AUSTRALIA

JOEY GOULD



HEIGHT 188 / 6'2" | CHEST 97 / 38 | WAIST 80 / 31.5 | HAIR BROWN | EYES HAZEL | SHOES 44.5 / 10.5
SUIT 50 / 40 | COLLAR 39 / 15.5

kult
AUSTRALIA

JOEY GOULD



HEIGHT 188 / 6'2" | CHEST 97 / 38 | WAIST 80 / 31.5 | HAIR BROWN | EYES HAZEL | SHOES 44.5 / 10.5
SUIT 50 / 40 | COLLAR 39 / 15.5

kult
AUSTRALIA

JOEY GOULD



HEIGHT 188 / 6'2" | CHEST 97 / 38 | WAIST 80 / 31.5 | HAIR BROWN | EYES HAZEL | SHOES 44.5 / 10.5
SUIT 50 / 40 | COLLAR 39 / 15.5

kult
AUSTRALIA