

EVANS NIKOPOULOS

# The Perfect Man

CASUAL  
IN  
NATURE

EVANS NIKOPOULOS  
WEARS PAUL & SHARK



HEIGHT 188 / 6'2" | CHEST 97 / 38 | WAIST 81 / 32 | HAIR BROWN | EYES BLUE | SHOES 44 / 10

kult  
AUSTRALIA

EVANS NIKOPOULOS



# The Perfect Man

EVANS  
NIKOPOULOS

K  
SPRING

HEIGHT 188 / 6'2" | CHEST 97 / 38 | WAIST 81 / 32 | HAIR BROWN | EYES BLUE | SHOES 44 / 10

kult  
AUSTRALIA

# EVANS NIKOPOULOS



HEIGHT 188 / 6'2" | CHEST 97 / 38 | WAIST 81 / 32 | HAIR BROWN | EYES BLUE | SHOES 44 / 10

kult  
AUSTRALIA

# EVANS NIKOPOULOS



HEIGHT 188 / 6'2" | CHEST 97 / 38 | WAIST 81 / 32 | HAIR BROWN | EYES BLUE | SHOES 44 / 10

kult  
AUSTRALIA

# EVANS NIKOPOULOS



HEIGHT 188 / 6'2" | CHEST 97 / 38 | WAIST 81 / 32 | HAIR BROWN | EYES BLUE | SHOES 44 / 10

kult  
AUSTRALIA

# EVANS NIKOPOULOS



HEIGHT 188 / 6'2" | CHEST 97 / 38 | WAIST 81 / 32 | HAIR BROWN | EYES BLUE | SHOES 44 / 10

kult  
AUSTRALIA

# EVANS NIKOPOULOS



HEIGHT 188 / 6'2" | CHEST 97 / 38 | WAIST 81 / 32 | HAIR BROWN | EYES BLUE | SHOES 44 / 10

kult  
AUSTRALIA

# EVANS NIKOPOULOS



HEIGHT 188 / 6'2" | CHEST 97 / 38 | WAIST 81 / 32 | HAIR BROWN | EYES BLUE | SHOES 44 / 10

kult  
AUSTRALIA

# EVANS NIKOPOULOS



HEIGHT 188 / 6'2" | CHEST 97 / 38 | WAIST 81 / 32 | HAIR BROWN | EYES BLUE | SHOES 44 / 10

kult  
AUSTRALIA

# EVANS NIKOPOULOS



HEIGHT 188 / 6'2" | CHEST 97 / 38 | WAIST 81 / 32 | HAIR BROWN | EYES BLUE | SHOES 44 / 10

kult  
AUSTRALIA

# EVANS NIKOPOULOS



HEIGHT 188 / 6'2" | CHEST 97 / 38 | WAIST 81 / 32 | HAIR BROWN | EYES BLUE | SHOES 44 / 10

kult  
AUSTRALIA

# EVANS NIKOPOULOS



HEIGHT 188 / 6'2" | CHEST 97 / 38 | WAIST 81 / 32 | HAIR BROWN | EYES BLUE | SHOES 44 / 10

kult  
AUSTRALIA

# EVANS NIKOPOULOS



HEIGHT 188 / 6'2" | CHEST 97 / 38 | WAIST 81 / 32 | HAIR BROWN | EYES BLUE | SHOES 44 / 10

kult  
AUSTRALIA

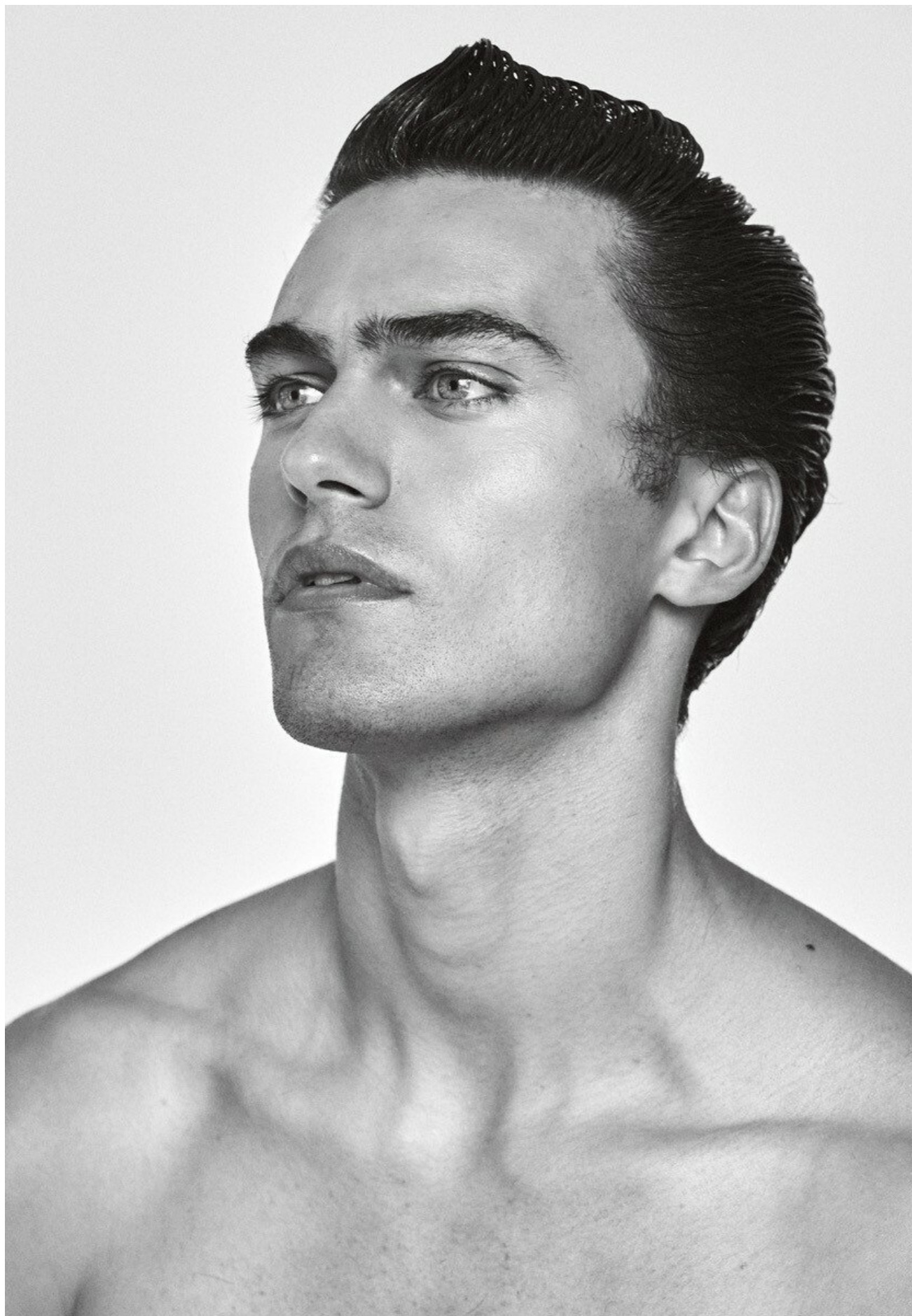
# EVANS NIKOPOULOS



HEIGHT 188 / 6'2" | CHEST 97 / 38 | WAIST 81 / 32 | HAIR BROWN | EYES BLUE | SHOES 44 / 10

kult  
AUSTRALIA

# EVANS NIKOPOULOS



HEIGHT 188 / 6'2" | CHEST 97 / 38 | WAIST 81 / 32 | HAIR BROWN | EYES BLUE | SHOES 44 / 10

kult  
AUSTRALIA

# EVANS NIKOPOULOS

IDE-NOTE 04.F/W25



PHOTOGRAPHY Rob Tennent STYLING Emma Kalfus WORDS Lucia Hawley

HEIGHT 188 / 6'2" | CHEST 97 / 38 | WAIST 81 / 32 | HAIR BROWN | EYES BLUE | SHOES 44 / 10

kult  
AUSTRALIA

# EVANS NIKOPOULOS



A nostalgic take on athletic dressing, these bougie trackpants are executed with French precision. Celine trackpants and necklace. Opposite: Shelve your boring black corporate attire and lighten the mood with top-to-toe tonal. Hermès coat; Ralph Lauren jacket, shirt and pants; Gucci tie

HEIGHT 188 / 6'2" | CHEST 97 / 38 | WAIST 81 / 32 | HAIR BROWN | EYES BLUE | SHOES 44 / 10

kult  
AUSTRALIA

# EVANS NIKOPOULOS



Baby tees for the boys. Evans wears Carys Norwood T-shirt; Hermès pants. Mabok wears Carys Norwood T-shirt; Fendi pants and bag

Grooming Cherry Cheung at Vivien's Creative; Diane Gorgievski. Models: Evans Nikopoulos at Kult Australia; Mabok; Nat Gregory at Chadwick Models

HEIGHT 188 / 6'2" | CHEST 97 / 38 | WAIST 81 / 32 | HAIR BROWN | EYES BLUE | SHOES 44 / 10

kult  
AUSTRALIA

# EVANS NIKOPOULOS



HEIGHT 188 / 6'2" | CHEST 97 / 38 | WAIST 81 / 32 | HAIR BROWN | EYES BLUE | SHOES 44 / 10

kult  
AUSTRALIA

# EVANS NIKOPOULOS



HEIGHT 188 / 6'2" | CHEST 97 / 38 | WAIST 81 / 32 | HAIR BROWN | EYES BLUE | SHOES 44 / 10

kult  
AUSTRALIA

# EVANS NIKOPOULOS



HEIGHT 188 / 6'2" | CHEST 97 / 38 | WAIST 81 / 32 | HAIR BROWN | EYES BLUE | SHOES 44 / 10

kult  
AUSTRALIA

# EVANS NIKOPOULOS



HEIGHT 188 / 6'2" | CHEST 97 / 38 | WAIST 81 / 32 | HAIR BROWN | EYES BLUE | SHOES 44 / 10

kult  
AUSTRALIA

# EVANS NIKOPOULOS



HEIGHT 188 / 6'2" | CHEST 97 / 38 | WAIST 81 / 32 | HAIR BROWN | EYES BLUE | SHOES 44 / 10

kult  
AUSTRALIA

# EVANS NIKOPOULOS



HEIGHT 188 / 6'2" | CHEST 97 / 38 | WAIST 81 / 32 | HAIR BROWN | EYES BLUE | SHOES 44 / 10

kult  
AUSTRALIA

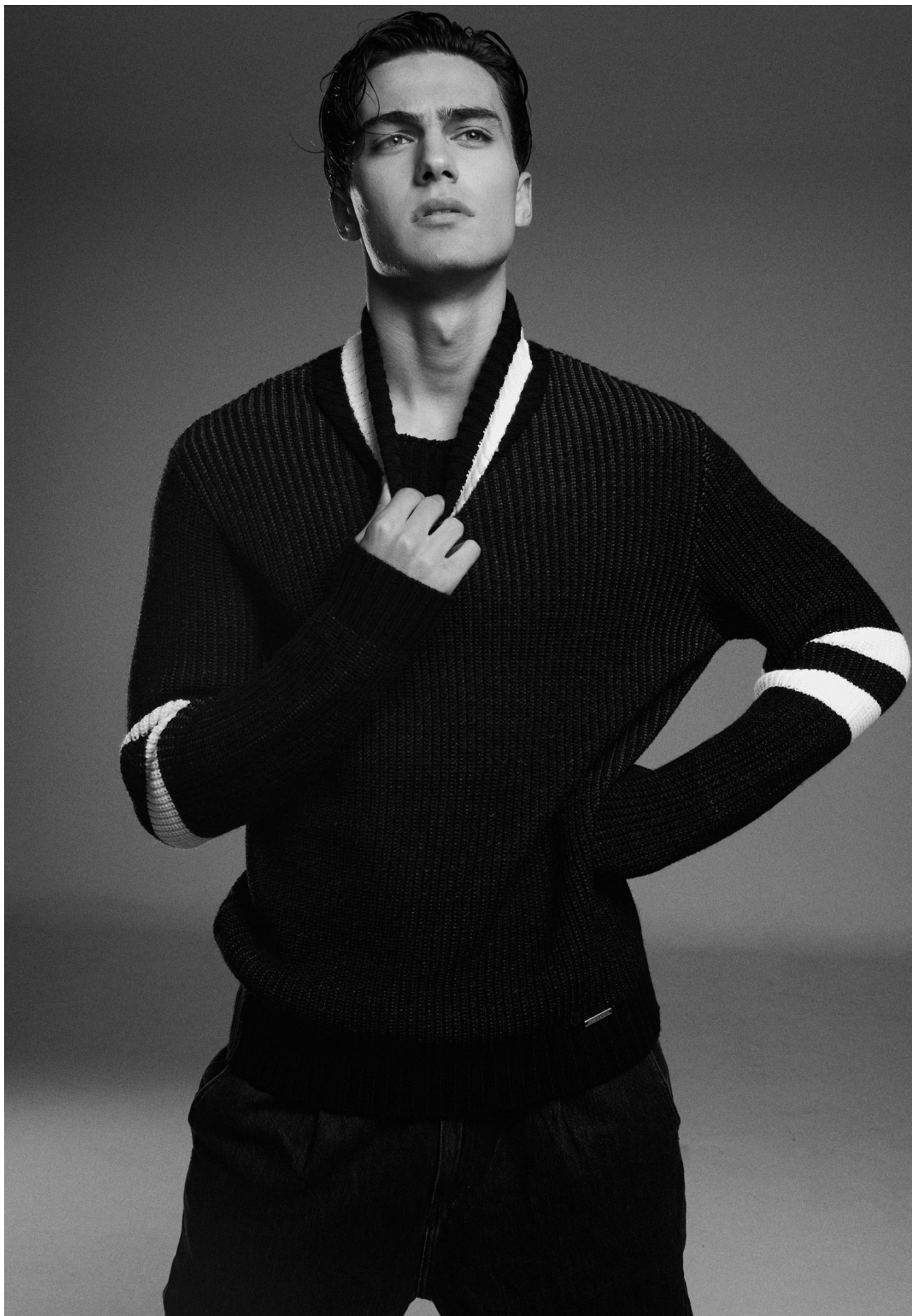
# EVANS NIKOPOULOS



HEIGHT 188 / 6'2" | CHEST 97 / 38 | WAIST 81 / 32 | HAIR BROWN | EYES BLUE | SHOES 44 / 10

kult  
AUSTRALIA

# EVANS NIKOPOULOS



HEIGHT 188 / 6'2" | CHEST 97 / 38 | WAIST 81 / 32 | HAIR BROWN | EYES BLUE | SHOES 44 / 10

kult  
AUSTRALIA

# EVANS NIKOPOULOS



HEIGHT 188 / 6'2" | CHEST 97 / 38 | WAIST 81 / 32 | HAIR BROWN | EYES BLUE | SHOES 44 / 10

kult  
AUSTRALIA

# EVANS NIKOPOULOS

AN ABOUT TOWN



HEIGHT 188 / 6'2" | CHEST 97 / 38 | WAIST 81 / 32 | HAIR BROWN | EYES BLUE | SHOES 44 / 10

kult  
AUSTRALIA

EVANS NIKOPOULOS

DIRECTOR'S CUT

# MAN ABOUT TOWN

SPRING / SUMMER 2024

FASHION BY MARTINE ROSE  
& ANDERSON BELL



PHOTOGRAPHY BY James Anastasi

STYLING BY Luke Day

HEIGHT 188 / 6'2" | CHEST 97 / 38 | WAIST 81 / 32 | HAIR BROWN | EYES BLUE | SHOES 44 / 10

kult  
AUSTRALIA

# EVANS NIKOPOULOS

AN ABOUT TOWN



HEIGHT 188 / 6'2" | CHEST 97 / 38 | WAIST 81 / 32 | HAIR BROWN | EYES BLUE | SHOES 44 / 10

kult  
AUSTRALIA

# EVANS NIKOPOULOS



HEIGHT 188 / 6'2" | CHEST 97 / 38 | WAIST 81 / 32 | HAIR BROWN | EYES BLUE | SHOES 44 / 10

kult  
AUSTRALIA

# EVANS NIKOPOULOS



HEIGHT 188 / 6'2" | CHEST 97 / 38 | WAIST 81 / 32 | HAIR BROWN | EYES BLUE | SHOES 44 / 10

kult  
AUSTRALIA