

# MITCH KING



HEIGHT 188 / 6'2" | CHEST 97 / 38 | WAIST 80 / 31.5 | HAIR BROWN | EYES BLUE | SHOES 44.5 / 10.5  
SUIT 50 / 40 | COLLAR 39 / 15.5

kult  
AUSTRALIA



# MITCH KING



HEIGHT 188 / 6'2" | CHEST 97 / 38 | WAIST 80 / 31.5 | HAIR BROWN | EYES BLUE | SHOES 44.5 / 10.5  
SUIT 50 / 40 | COLLAR 39 / 15.5

kult  
AUSTRALIA



# MITCH KING



HEIGHT 188 / 6'2" | CHEST 97 / 38 | WAIST 80 / 31.5 | HAIR BROWN | EYES BLUE | SHOES 44.5 / 10.5  
SUIT 50 / 40 | COLLAR 39 / 15.5

kult  
AUSTRALIA



# MITCH KING



HEIGHT 188 / 6'2" | CHEST 97 / 38 | WAIST 80 / 31.5 | HAIR BROWN | EYES BLUE | SHOES 44.5 / 10.5  
SUIT 50 / 40 | COLLAR 39 / 15.5

kult  
AUSTRALIA



# MITCH KING



HEIGHT 188 / 6'2" | CHEST 97 / 38 | WAIST 80 / 31.5 | HAIR BROWN | EYES BLUE | SHOES 44.5 / 10.5  
SUIT 50 / 40 | COLLAR 39 / 15.5

kult  
AUSTRALIA



# MITCH KING



HEIGHT 188 / 6'2" | CHEST 97 / 38 | WAIST 80 / 31.5 | HAIR BROWN | EYES BLUE | SHOES 44.5 / 10.5  
SUIT 50 / 40 | COLLAR 39 / 15.5

kult  
AUSTRALIA



# MITCH KING



HEIGHT 188 / 6'2" | CHEST 97 / 38 | WAIST 80 / 31.5 | HAIR BROWN | EYES BLUE | SHOES 44.5 / 10.5  
SUIT 50 / 40 | COLLAR 39 / 15.5

kult  
AUSTRALIA



# MITCH KING



*She wears:* Prada leather and pony jacket, \$8350; Hermès cashmere and silk roll-neck top, \$1835 and leather skirt, \$4490; Bulgari Serpenti Forever bag, \$2910; Art Nouveau gold necklace with moonstone from Anne Schofield Antiques, \$12,000.

*He wears:* Bottega Veneta suede jacket, \$5050, cotton shirt, \$500 and trousers, \$1000; Ian Næss corduroy vest, \$590; Paul Smith scarf, \$380.

THE AFR MAGAZINE | JUNE

HEIGHT 188 / 6'2" | CHEST 97 / 38 | WAIST 80 / 31.5 | HAIR BROWN | EYES BLUE | SHOES 44.5 / 10.5  
SUIT 50 / 40 | COLLAR 39 / 15.5

kult  
AUSTRALIA



# MITCH KING



HEIGHT 188 / 6'2" | CHEST 97 / 38 | WAIST 80 / 31.5 | HAIR BROWN | EYES BLUE | SHOES 44.5 / 10.5  
SUIT 50 / 40 | COLLAR 39 / 15.5

kult  
AUSTRALIA



# MITCH KING



jacket,  
hmere  
erry  
ith  
Tod's  
e  
;1000.

HEIGHT 188 / 6'2" | CHEST 97 / 38 | WAIST 80 / 31.5 | HAIR BROWN | EYES BLUE | SHOES 44.5 / 10.5  
SUIT 50 / 40 | COLLAR 39 / 15.5

kult  
AUSTRALIA



# MITCH KING



HEIGHT 188 / 6'2" | CHEST 97 / 38 | WAIST 80 / 31.5 | HAIR BROWN | EYES BLUE | SHOES 44.5 / 10.5  
SUIT 50 / 40 | COLLAR 39 / 15.5

kult  
AUSTRALIA



# MITCH KING



HEIGHT 188 / 6'2" | CHEST 97 / 38 | WAIST 80 / 31.5 | HAIR BROWN | EYES BLUE | SHOES 44.5 / 10.5  
SUIT 50 / 40 | COLLAR 39 / 15.5

kult  
AUSTRALIA



# MITCH KING

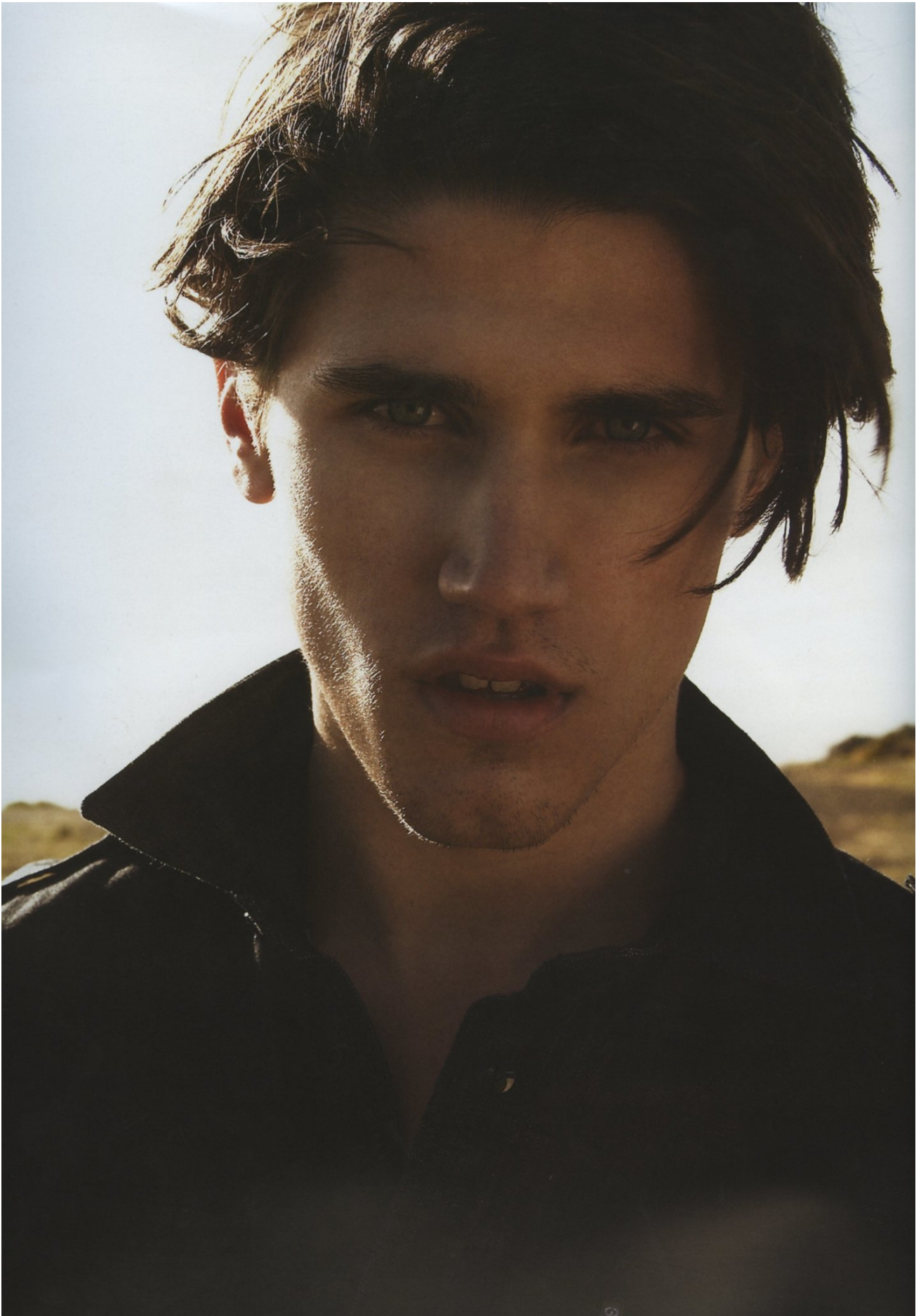


HEIGHT 188 / 6'2" | CHEST 97 / 38 | WAIST 80 / 31.5 | HAIR BROWN | EYES BLUE | SHOES 44.5 / 10.5  
SUIT 50 / 40 | COLLAR 39 / 15.5

kult  
AUSTRALIA



# MITCH KING



HEIGHT 188 / 6'2" | CHEST 97 / 38 | WAIST 80 / 31.5 | HAIR BROWN | EYES BLUE | SHOES 44.5 / 10.5  
SUIT 50 / 40 | COLLAR 39 / 15.5

kult  
AUSTRALIA



# MITCH KING



HEIGHT 188 / 6'2" | CHEST 97 / 38 | WAIST 80 / 31.5 | HAIR BROWN | EYES BLUE | SHOES 44.5 / 10.5  
SUIT 50 / 40 | COLLAR 39 / 15.5

kult  
AUSTRALIA



MITCH KING



# THE HUSTLER

KEEP YOUR STYLE  
GAME ON CUE AND  
REFRESH YOUR SPRING  
WARDROBE WITH THESE  
UPDATED CLASSICS

STYLING BY  
**VIRGINIA VAN  
HEYTHUYSEN**

PHOTOGRAPHY BY  
**DAMIAN  
BENNETT**

## CHECKED OUT

Checks are a failsafe way to introduce pattern into your wardrobe. Try a small-check Harrington jacket like this or, for a more formal take, choose a windowpane-check blazer.

"Keep checks the main focus of the look and team neutral colours with the check," says fashion stylist Melissa Boyle. ➤

- Ben Sherman cotton jacket \$349.95
- Marcs short-sleeve cotton shirt \$129 and belt \$69 (Available at Myer)
- M.J. Bale wool trousers \$299

HEIGHT 188 / 6'2" | CHEST 97 / 38 | WAIST 80 / 31.5 | HAIR BROWN | EYES BLUE | SHOES 44.5 / 10.5  
SUIT 50 / 40 | COLLAR 39 / 15.5

kult  
AUSTRALIA



# MITCH KING



## STRIPE RIGHT

The nautical striped top is a classic summer staple and the bandwidth is increasing. "Don't be afraid of the wider stripe," says Boyle. "They're really fresh teamed with white jeans."

- Tommy Hilfiger cotton top \$140
- Calvin Klein Jeans \$129.95
- Maui Jim Liana sunglasses \$299
- Bell & Ross Sport Heritage watch \$6000

HEIGHT 188 / 6'2" | CHEST 97 / 38 | WAIST 80 / 31.5 | HAIR BROWN | EYES BLUE | SHOES 44.5 / 10.5  
SUIT 50 / 40 | COLLAR 39 / 15.5

kult  
AUSTRALIA



# MITCH KING



**HANG LOOSE**

There's a style evolution moving away from skinny-leg strides with the new wider-leg, pleat-front pant. "It looks coolest with an ankle-grazing hem and sockless shoes," says Boyle. "Keep your top half neat and fitted, and if you prefer denim jeans, try a straight leg in raw denim with a turned-up hem." ➤

- Country Road polo shirt \$69.95
- Paul Smith cotton chinos \$435
- Ben Sherman woven belt \$49.95
- Calibre woven leather sneakers \$269
- Rotary Avenger watch \$815

HEIGHT 188 / 6'2" | CHEST 97 / 38 | WAIST 80 / 31.5 | HAIR BROWN | EYES BLUE | SHOES 44.5 / 10.5  
SUIT 50 / 40 | COLLAR 39 / 15.5

kult  
AUSTRALIA



# MITCH KING

# GQ style

THIS MONTH  
G-STAR RAW

// THE LATEST ACCESSORIES

PUFFER JACKETS //

EDITED BY Matthew Paroz

Faded and distressed  
'Essential Arc Western  
Jacket', \$790; nomad  
twill 'Tunnel Shirt',  
\$140; cotton cable knit  
'Eastville Shawl Collar'  
sweater, \$190; wool  
'CL Chino' pants, \$200;  
all by G-Star.

## BEYOND DENIM

With a little help from Dennis Hopper, the world's best chess player and Liv Tyler in a glass box, G-Star has mastered the art of the unexpected. Next up: products on which their customers can park their denim-clad derrières.

PHOTOGRAPHY ADRIAN MEŠKO  
STYLING WAYNE GROSS

JUNE/JULY 2011 / GQ.COM.AU / 71

HEIGHT 188 / 6'2" | CHEST 97 / 38 | WAIST 80 / 31.5 | HAIR BROWN | EYES BLUE | SHOES 44.5 / 10.5  
SUIT 50 / 40 | COLLAR 39 / 15.5

kult  
AUSTRALIA



# MITCH KING

## GREY BLADES

*Neutral it may be, but grey is far from bland. Assembling tonal layers of ash, slate and charcoal invites an exploration of texture. Flannel, tweed and cashmere gently play off one another in an exercise of sublime subtlety and sophistication.*

GREY CHECK CASHMERE/SILK/VISCOSE  
CARF, \$1150, BY **GIORGIO ARMANI**;  
CHARCOAL WOOL SUIT, \$1490, BY  
**ZEGNA**; GREY COTTON SHIRT, \$90, BY  
ROOKSFIELD; GREY WOOL SKINNY TIE,  
\$80, BY **M.J. BALE**; CHARCOAL WOOL  
LEND OVERCOAT, \$970, BY **PAUL SMITH**;  
MASTER COLLECTION 'BLACK 12 ROMAN'  
WATCH, \$2850, BY **LONGINES**.



HEIGHT 188 / 6'2" | CHEST 97 / 38 | WAIST 80 / 31.5 | HAIR BROWN | EYES BLUE | SHOES 44.5 / 10.5  
SUIT 50 / 40 | COLLAR 39 / 15.5

kult  
AUSTRALIA



# MITCH KING

## LEATHER LOUNGING

*Never far from fashion's consciousness, leather's perennial appeal rests on a beguiling mix of rebellion and luxury. This season, skins hark back to Hollywood's bad boy heyday, as exemplified by Marlon Brando and James Dean.*

BLACK LEATHER BIKER JACKET, \$2295; BLACK AND CREAM CASHMERE/SILK CHECK SCARF, \$495; OLD STONE CASHMERE/SILK KNIT, \$475, ALL BY **BURBERRY LONDON**; NAVY DENIM WRAP CROPPED PANTS, \$339, BY **SUPERFINE**; GOLD 'VISODATE' WATCH, \$800, BY **TISSOT**.



HEIGHT 188 / 6'2" | CHEST 97 / 38 | WAIST 80 / 31.5 | HAIR BROWN | EYES BLUE | SHOES 44.5 / 10.5  
SUIT 50 / 40 | COLLAR 39 / 15.5

kult  
AUSTRALIA



# MITCH KING



## MAD FOR IT

*Having rediscovered mid-century men's tailoring, fashion's Madison Avenue obsession can't be escaped. And who'd want to? Not Prada, Kenzo and Westwood, who play with masculine cuts, V-neck sweaters and pea coats topped with elegant hats.*

WOOL BOWLER HAT, \$80, BY **BLAKE**; WOOL/  
POLYAMIDE OVERCOAT, \$1589, BY **KENZO**  
COTTON PINSTRIPE SHIRT, \$179, BY **LACOSTE**  
TWEED-WOOL BLEND TROUSERS, \$450, BY **PAUL  
SMITH**; GOLD RIMMED 'DE VILLE' PRESTIGE  
CO-AXIAL GENTS WATCH, \$8450, BY **OMEGA**

HEIGHT 188 / 6'2" | CHEST 97 / 38 | WAIST 80 / 31.5 | HAIR BROWN | EYES BLUE | SHOES 44.5 / 10.5  
SUIT 50 / 40 | COLLAR 39 / 15.5

kult  
AUSTRALIA



# MITCH KING

## SHEAR BRILLIANCE

*The tactile appeal of this fabric is undeniable. Embrace discotheque chic — the new shearling is evocative of Studio 54, albeit with a honed modernity. And forget fleece that's as white as driven snow: black sheep are always more fun.*

LEATHER SHEARLING OVERCOAT WITH MERINO WOOL LINING, \$3099, BY **BOSS BLACK**; COTTON PINSTRIPE SHIRT, \$159, BY **MARCS**; WOOL CHECK TIE, \$80, BY **M.J. BALE**; TWILL BUTTON-FLY TROUSERS, \$159, BY **MARCS**; LEATHER LACE-UP SHOES, \$349, BY **CK CALVIN KLEIN**.

*This winter's fashion is about paying homage to iconic epochs from the last century. The buttoned-down classicism of the '20s and '50s gets a hearing, alongside the renegade spirit of the Wild West and the golden age of Hollywood.*

## RETRO (FOR THE) COOL

PHOTOGRAPHY **ADRIAN MEŠKO** STYLING **WAYNE GROSS**

HEIGHT 188 / 6'2" | CHEST 97 / 38 | WAIST 80 / 31.5 | HAIR BROWN | EYES BLUE | SHOES 44.5 / 10.5  
SUIT 50 / 40 | COLLAR 39 / 15.5

kult  
AUSTRALIA



# MITCH KING

## GO WESTERN, YOUNG MAN

*A distinct air of Americana blows through  
as casual wear goes for Brokeback  
Coralling cues from Cavalli and  
Ferragamo's cowboy style, use a foundation  
of rugged denim for Navajo print cardigans  
and textured animal-pelt detail*

NAVY DENIM JACKET, \$270, BY **G-STAR**; CARAMEL  
WOOL KNIT 'JED' CARDIGAN, \$140, BY **LEE**; NAVY  
DENIM COTTON SHIRT, \$199, BY **BOSS ORANGE**  
NAVY DENIM 'CHICO' WASH JEANS, \$150, BY  
**GUESS**; TAN PATTERNED LEATHER BELT, \$160, BY  
**R.M. WILLIAMS**; SILVER RAM'S SKULL NECKLACE  
\$139, BY **KATZI**; STERLING SILVER CHAIN LINK  
BRACELET, \$475, BY **CHRONICLES OF NEVER**

HEIGHT 188 / 6'2" | CHEST 97 / 38 | WAIST 80 / 31.5 | HAIR BROWN | EYES BLUE | SHOES 44.5 / 10.5  
SUIT 50 / 40 | COLLAR 39 / 15.5

kult  
AUSTRALIA



# MITCH KING

## ONCE MORE, IT'S ABOUT LESS

*The return of '90s minimalism brings simplified silhouettes and downplayed detail. In a pared-back palette of monochromatic neutrals, it recalls the stark elegance pioneered by Calvin Klein and Helmut Lang.*

WOOL OVERCOAT, \$490, BY G-STAR RAW;  
COTTON 'GILES' SHIRT, \$179, BY ARTHUR  
BALAN AG; SILK SKINNY TIE, \$90, BY  
G-STAR RAW; COTTON TROUSERS, \$600,  
BY ERMENEGILDO ZEGNA; 'ROUND FACE'  
WATCH, \$360, BY CK CALVIN KLEIN.



HEIGHT 188 / 6'2" | CHEST 97 / 38 | WAIST 80 / 31.5 | HAIR BROWN | EYES BLUE | SHOES 44.5 / 10.5  
SUIT 50 / 40 | COLLAR 39 / 15.5

kult  
AUSTRALIA



# MITCH KING

## DUKE IT OUT

*He's the villain in The King's Speech, but the Duke of Windsor's preppy dressing is easier to admire than his politics. Dress like an (ex) king by sporting tweed over knitwear, autumnal tones augmented with heritage prints and a pocket square.*

TWEED BLAZER, \$1349, BY GANT; SILK POCKETCHIEF, \$100, BY POLO RALPH LAUREN; LAMB'S WOOL SWEATER, \$399, BY POLO RALPH LAUREN; COTTON PINSTRIPE SHIRT, \$200, BY POLO RALPH LAUREN; WOOL/SILK CHECKED TIE, \$179, BY GANT; 'WALE CORD' COTTON JEANS, \$269, BY GANT; LEATHER 'BRADVALE' BOOTS, \$355, BY R.M. WILLIAMS; STAINLESS STEEL 'ARTELIER SKELETON' WATCH, \$2295, BY ORIS.



HEIGHT 188 / 6'2" | CHEST 97 / 38 | WAIST 80 / 31.5 | HAIR BROWN | EYES BLUE | SHOES 44.5 / 10.5  
SUIT 50 / 40 | COLLAR 39 / 15.5

kult  
AUSTRALIA