

PATRICK NODANCHE



HEIGHT 188 / 6'2" | CHEST 97 / 38 | WAIST 81 / 32 | HAIR BLACK | EYES BROWN | SHOES 44.5 / 10.5 | SUIT 48 / 38 L

kult
AUSTRALIA

PATRICK NODANCHE



HEIGHT 188 / 6'2" | CHEST 97 / 38 | WAIST 81 / 32 | HAIR BLACK | EYES BROWN | SHOES 44.5 / 10.5 | SUIT 48 / 38 L

kult
AUSTRALIA

PATRICK NODANCHE



HEIGHT 188 / 6'2" | CHEST 97 / 38 | WAIST 81 / 32 | HAIR BLACK | EYES BROWN | SHOES 44.5 / 10.5 | SUIT 48 / 38 L

kult
AUSTRALIA

PATRICK NODANCHE



HEIGHT 188 / 6'2" | CHEST 97 / 38 | WAIST 81 / 32 | HAIR BLACK | EYES BROWN | SHOES 44.5 / 10.5 | SUIT 48 / 38 L

kult
AUSTRALIA

PATRICK NODANCHE



HEIGHT 188 / 6'2" | CHEST 97 / 38 | WAIST 81 / 32 | HAIR BLACK | EYES BROWN | SHOES 44.5 / 10.5 | SUIT 48 / 38 L

kult
AUSTRALIA

PATRICK NODANCHE



HEIGHT 188 / 6'2" | CHEST 97 / 38 | WAIST 81 / 32 | HAIR BLACK | EYES BROWN | SHOES 44.5 / 10.5 | SUIT 48 / 38 L

kult
AUSTRALIA



Look sharp | Live smart

GQstyle

YOUR STRONG SUIT

Your modern suiting guide, broken down and simplified for everyday use

PHOTOGRAPHER
Steve Marais
FASHION DIRECTOR
Michael Beaumont Cooper

Galluzzi E Gini blazer R4 500, shirt R1 350, trousers R2 300. Ray-Ban at Luxottica spectacles R1 650. Galluzzi E Gini tie R750. Nic Harry at Robert Daniel tie pin R140. Hallmark at CJR Gift Sales watch R299

Text

Page
108



How (and where) to wear an unlined blazer

Page
113



GQ's guide to taking care of your hair

Page
118



How to watch calories and still enjoy your meal

PATRICK NODANCHE

Paternal

A printed sweater, formal shirt and loose fitting trousers can help you achieve that more sophisticated smart-casual look that feels retro but still has a youthful edge.

Burberry jersey R9 990.
Woolworths shirt R799.
H&M trousers R749. **Tumi** at
Busby laptop bag R2 699.
G-Star RAW brogues R2 100



GQStyle

Head to GQ.co.za for
our Q&A with mid-
century modern
architect
Stefan Antoni



PATRICK NODANCHE

GGStyle

Two-piece

Ah, the trusty two-piece – the absolute must-have for every gentleman aspiring towards a functioning wardrobe and the first step in many towards acquiring a respectable collection of suits for all occasions. This is your most versatile look and a fundamental business essential. The best bet is to go for plain and simple colours that you'll wear often and can easily pair with other items in case you want to break the look down and mix and match.

Tiger of Sweden suit R12 699, shirt R3 099, **Ted Baker** tie R1 099, **Robert Daniel** pocket square (pack of three) R180, **Raymond Weil** at Picot & Moss watch R10 495, **Tosoni** at Spitz shoes R1 695



APRIL 2016 GG.CO.ZA 103

HEIGHT 188 / 6'2" | CHEST 97 / 38 | WAIST 81 / 32 | HAIR BLACK | EYES BROWN | SHOES 44.5 / 10.5 | SUIT 48 / 38 L

kult
AUSTRALIA

PATRICK NODANCHE



HEIGHT 188 / 6'2" | CHEST 97 / 38 | WAIST 81 / 32 | HAIR BLACK | EYES BROWN | SHOES 44.5 / 10.5 | SUIT 48 / 38 L

kult
AUSTRALIA

PATRICK NODANCHE



HEIGHT 188 / 6'2" | CHEST 97 / 38 | WAIST 81 / 32 | HAIR BLACK | EYES BROWN | SHOES 44.5 / 10.5 | SUIT 48 / 38 L

kult
AUSTRALIA

PATRICK NODANCHE



HEIGHT 188 / 6'2" | CHEST 97 / 38 | WAIST 81 / 32 | HAIR BLACK | EYES BROWN | SHOES 44.5 / 10.5 | SUIT 48 / 38 L

kult
AUSTRALIA

PATRICK NODANCHE



HEIGHT 188 / 6'2" | CHEST 97 / 38 | WAIST 81 / 32 | HAIR BLACK | EYES BROWN | SHOES 44.5 / 10.5 | SUIT 48 / 38 L

kult
AUSTRALIA

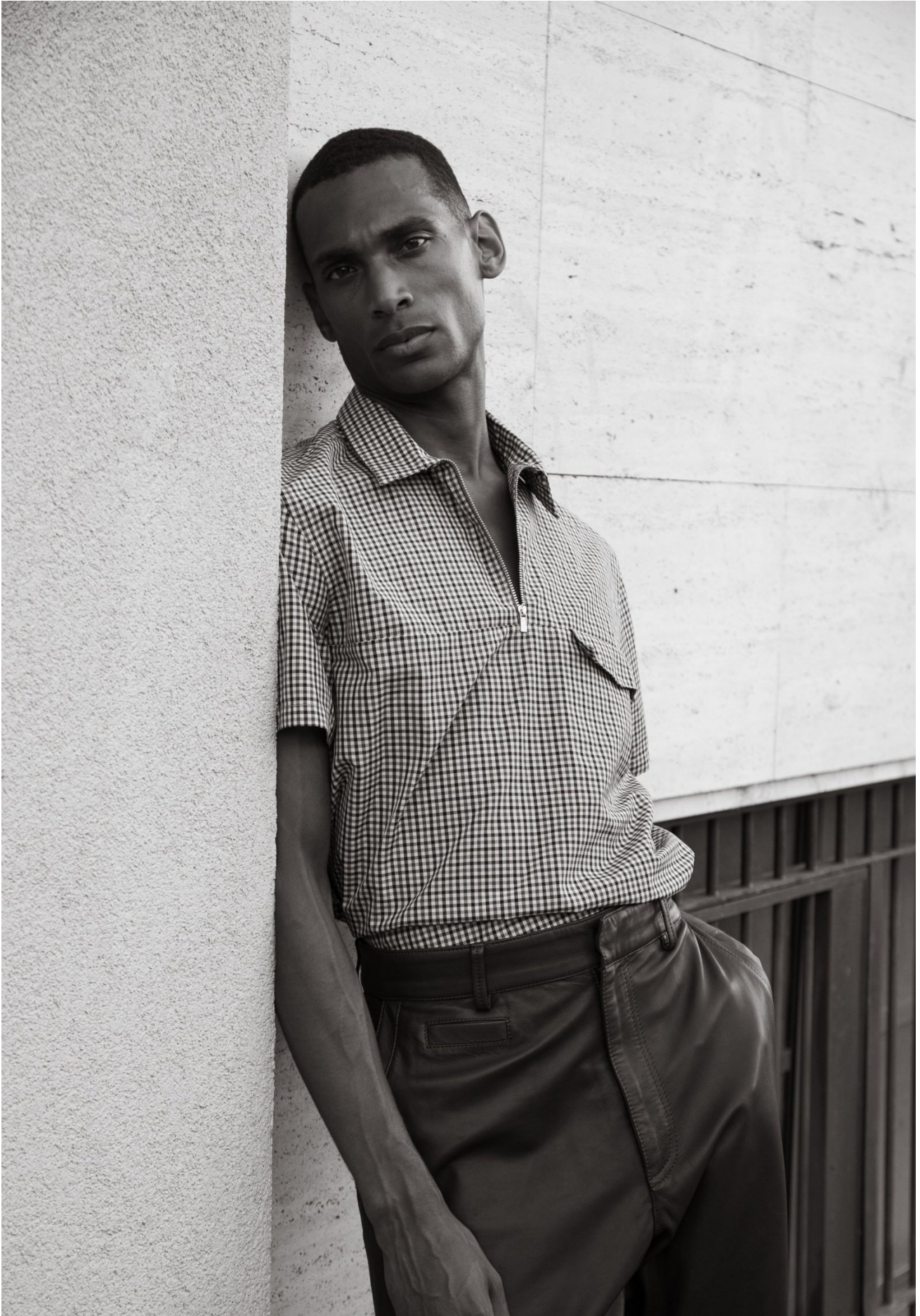
PATRICK NODANCHE



HEIGHT 188 / 6'2" | CHEST 97 / 38 | WAIST 81 / 32 | HAIR BLACK | EYES BROWN | SHOES 44.5 / 10.5 | SUIT 48 / 38 L

kult
AUSTRALIA

PATRICK NODANCHE



HEIGHT 188 / 6'2" | CHEST 97 / 38 | WAIST 81 / 32 | HAIR BLACK | EYES BROWN | SHOES 44.5 / 10.5 | SUIT 48 / 38 L

kult
AUSTRALIA

PATRICK NODANCHE



HEIGHT 188 / 6'2" | CHEST 97 / 38 | WAIST 81 / 32 | HAIR BLACK | EYES BROWN | SHOES 44.5 / 10.5 | SUIT 48 / 38 L

kult
AUSTRALIA

PATRICK NODANCHE



HEIGHT 188 / 6'2" | CHEST 97 / 38 | WAIST 81 / 32 | HAIR BLACK | EYES BROWN | SHOES 44.5 / 10.5 | SUIT 48 / 38 L

kult
AUSTRALIA

PATRICK NODANCHE



HEIGHT 188 / 6'2" | CHEST 97 / 38 | WAIST 81 / 32 | HAIR BLACK | EYES BROWN | SHOES 44.5 / 10.5 | SUIT 48 / 38 L

kult
AUSTRALIA

PATRICK NODANCHE



ARABIA **OGUE** MAN

HEIGHT 188 / 6'2" | CHEST 97 / 38 | WAIST 81 / 32 | HAIR BLACK | EYES BROWN | SHOES 44.5 / 10.5 | SUIT 48 / 38 L

kult
AUSTRALIA

PATRICK NODANCHE



OGUE MAN

HEIGHT 188 / 6'2" | CHEST 97 / 38 | WAIST 81 / 32 | HAIR BLACK | EYES BROWN | SHOES 44.5 / 10.5 | SUIT 48 / 38 L

kult
AUSTRALIA

PATRICK NODANCHE



HEIGHT 188 / 6'2" | CHEST 97 / 38 | WAIST 81 / 32 | HAIR BLACK | EYES BROWN | SHOES 44.5 / 10.5 | SUIT 48 / 38 L

kult
AUSTRALIA

PATRICK NODANCHE



HEIGHT 188 / 6'2" | CHEST 97 / 38 | WAIST 81 / 32 | HAIR BLACK | EYES BROWN | SHOES 44.5 / 10.5 | SUIT 48 / 38 L

kult
AUSTRALIA

PATRICK NODANCHE



HEIGHT 188 / 6'2" | CHEST 97 / 38 | WAIST 81 / 32 | HAIR BLACK | EYES BROWN | SHOES 44.5 / 10.5 | SUIT 48 / 38 L

kult
AUSTRALIA

PATRICK NODANCHE



HEIGHT 188 / 6'2" | CHEST 97 / 38 | WAIST 81 / 32 | HAIR BLACK | EYES BROWN | SHOES 44.5 / 10.5 | SUIT 48 / 38 L

kult
AUSTRALIA

PATRICK NODANCHE



HEIGHT 188 / 6'2" | CHEST 97 / 38 | WAIST 81 / 32 | HAIR BLACK | EYES BROWN | SHOES 44.5 / 10.5 | SUIT 48 / 38 L

kult
AUSTRALIA

PATRICK NODANCHE



HEIGHT 188 / 6'2" | CHEST 97 / 38 | WAIST 81 / 32 | HAIR BLACK | EYES BROWN | SHOES 44.5 / 10.5 | SUIT 48 / 38 L

kult
AUSTRALIA

PATRICK NODANCHE



HEIGHT 188 / 6'2" | CHEST 97 / 38 | WAIST 81 / 32 | HAIR BLACK | EYES BROWN | SHOES 44.5 / 10.5 | SUIT 48 / 38 L

kult
AUSTRALIA

PATRICK NODANCHE



HEIGHT 188 / 6'2" | CHEST 97 / 38 | WAIST 81 / 32 | HAIR BLACK | EYES BROWN | SHOES 44.5 / 10.5 | SUIT 48 / 38 L

kult
AUSTRALIA

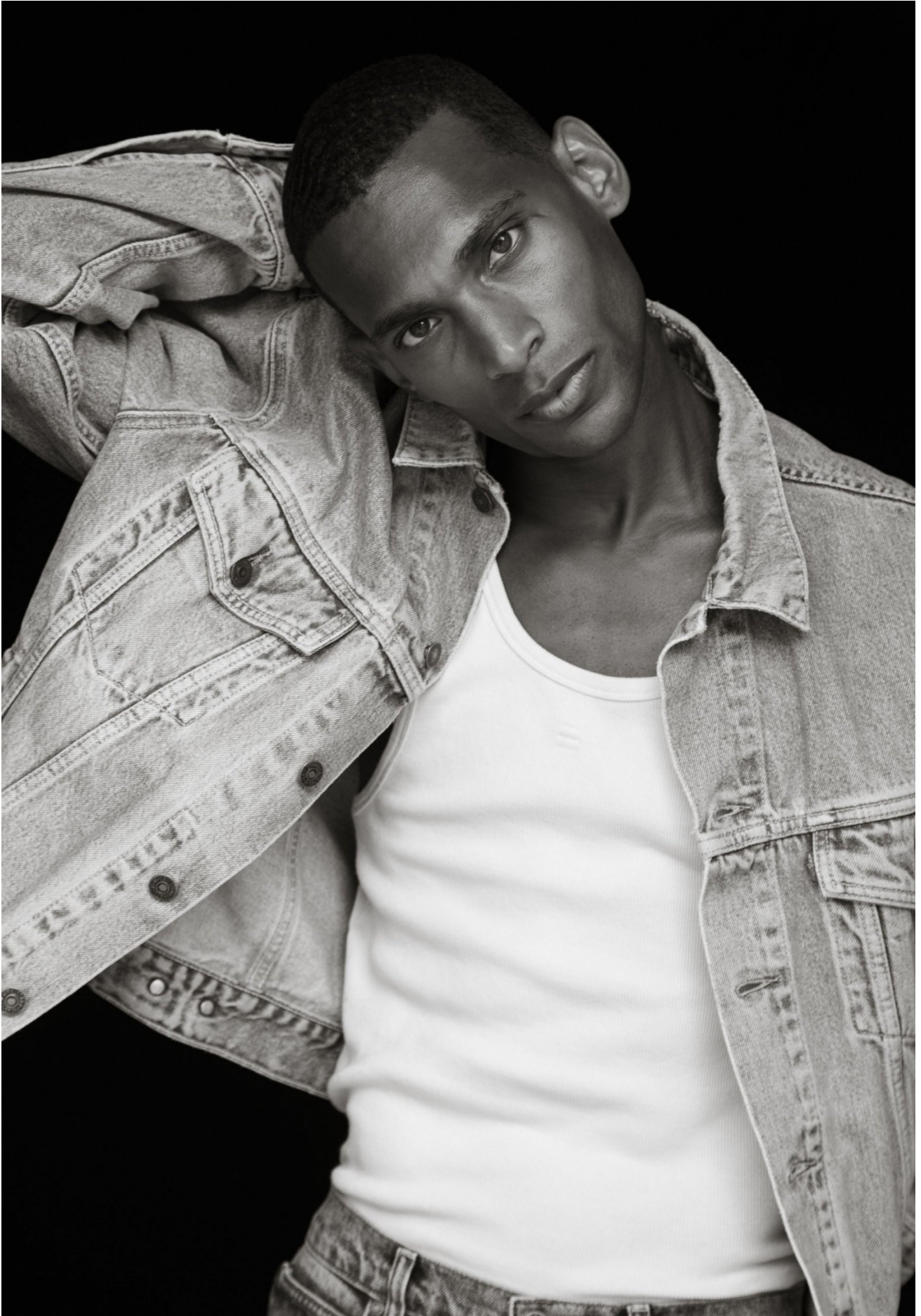
PATRICK NODANCHE



HEIGHT 188 / 6'2" | CHEST 97 / 38 | WAIST 81 / 32 | HAIR BLACK | EYES BROWN | SHOES 44.5 / 10.5 | SUIT 48 / 38 L

kult
AUSTRALIA

PATRICK NODANCHE



HEIGHT 188 / 6'2" | CHEST 97 / 38 | WAIST 81 / 32 | HAIR BLACK | EYES BROWN | SHOES 44.5 / 10.5 | SUIT 48 / 38 L

kult
AUSTRALIA

PATRICK NODANCHE



HEIGHT 188 / 6'2" | CHEST 97 / 38 | WAIST 81 / 32 | HAIR BLACK | EYES BROWN | SHOES 44.5 / 10.5 | SUIT 48 / 38 L

kult
AUSTRALIA

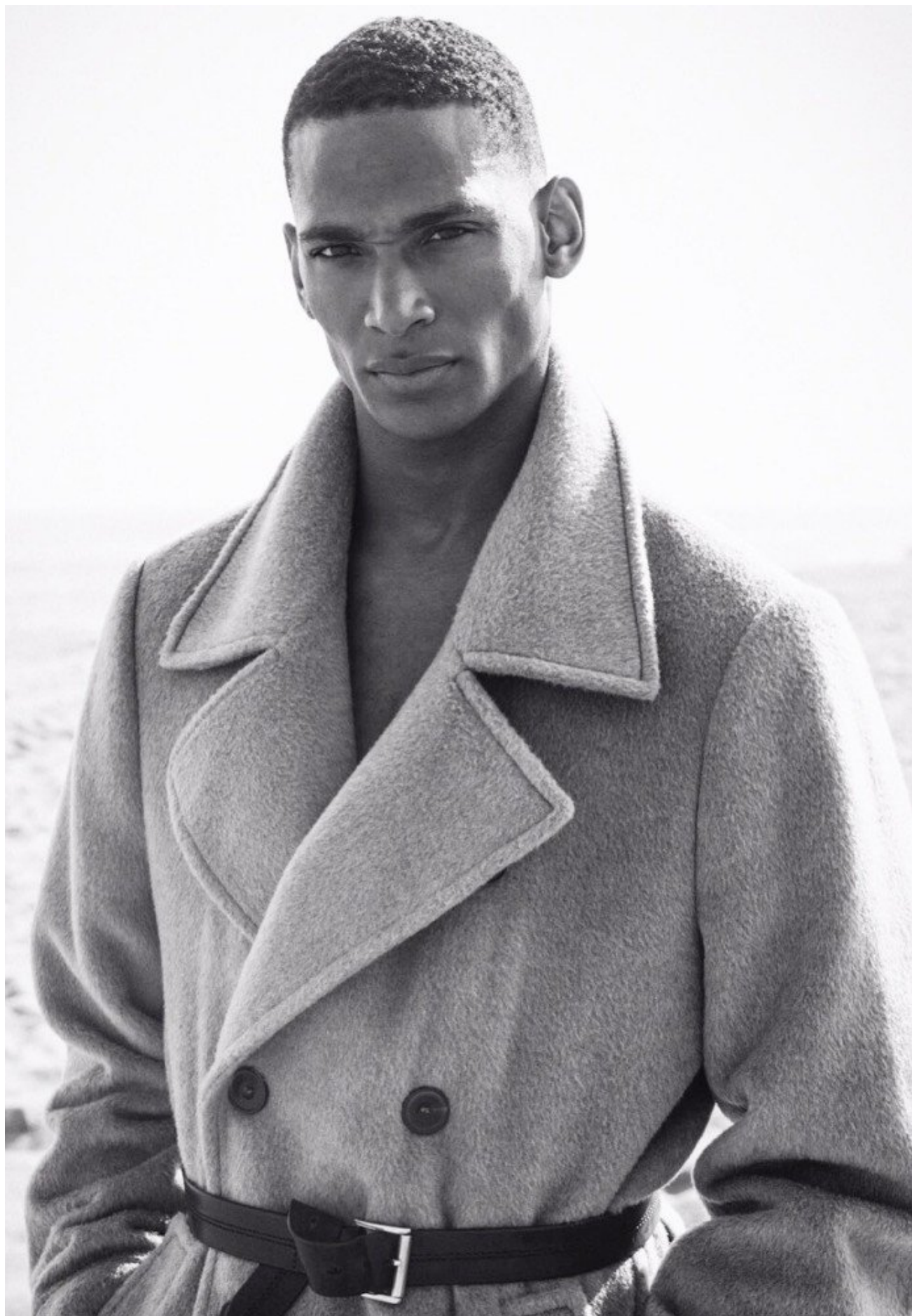
PATRICK NODANCHE



HEIGHT 188 / 6'2" | CHEST 97 / 38 | WAIST 81 / 32 | HAIR BLACK | EYES BROWN | SHOES 44.5 / 10.5 | SUIT 48 / 38 L

kult
AUSTRALIA

PATRICK NODANCHE



HEIGHT 188 / 6'2" | CHEST 97 / 38 | WAIST 81 / 32 | HAIR BLACK | EYES BROWN | SHOES 44.5 / 10.5 | SUIT 48 / 38 L

kult
AUSTRALIA

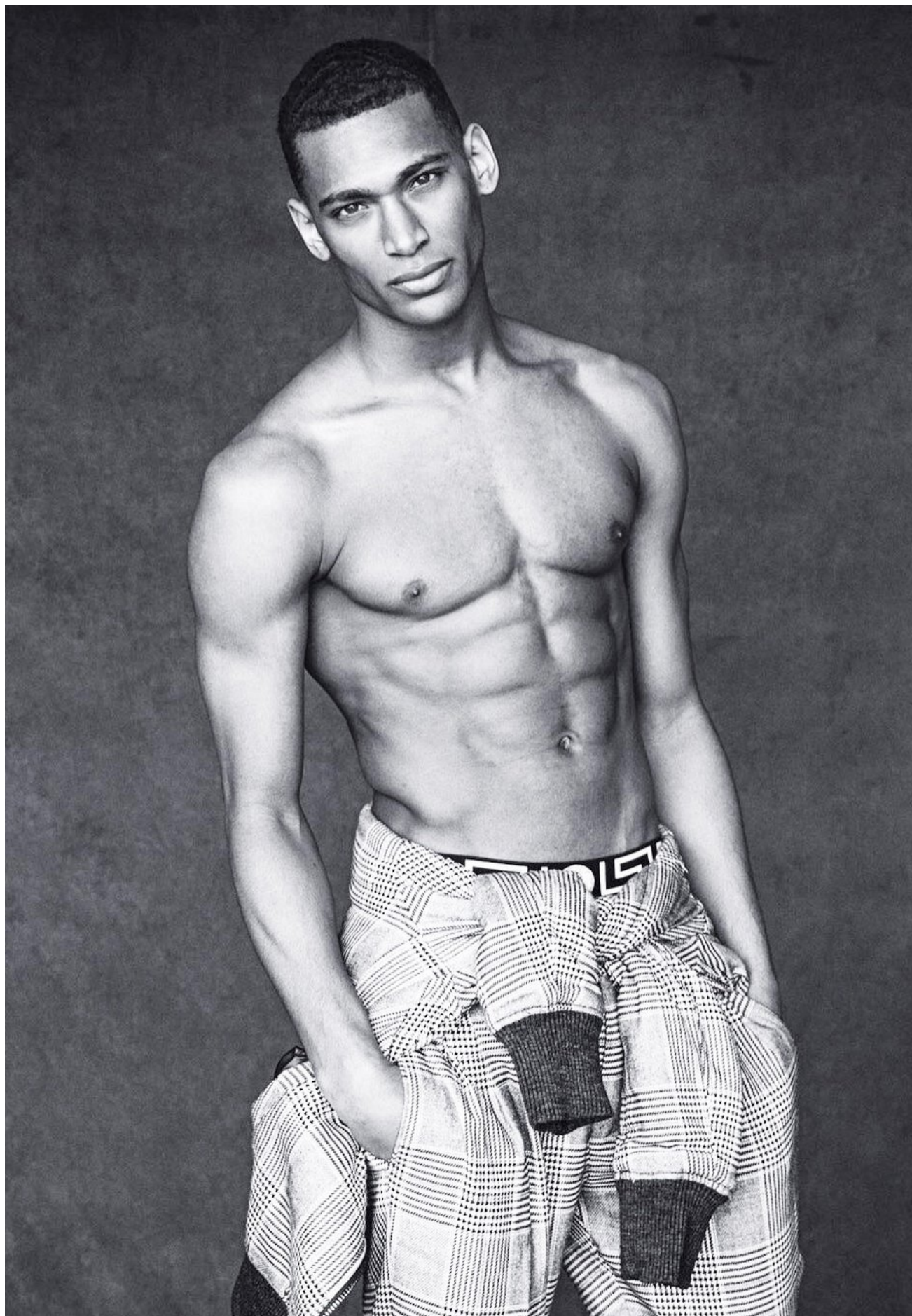
PATRICK NODANCHE



HEIGHT 188 / 6'2" | CHEST 97 / 38 | WAIST 81 / 32 | HAIR BLACK | EYES BROWN | SHOES 44.5 / 10.5 | SUIT 48 / 38 L

kult
AUSTRALIA

PATRICK NODANCHE



HEIGHT 188 / 6'2" | CHEST 97 / 38 | WAIST 81 / 32 | HAIR BLACK | EYES BROWN | SHOES 44.5 / 10.5 | SUIT 48 / 38 L

kult
AUSTRALIA

PATRICK NODANCHE



HEIGHT 188 / 6'2" | CHEST 97 / 38 | WAIST 81 / 32 | HAIR BLACK | EYES BROWN | SHOES 44.5 / 10.5 | SUIT 48 / 38 L

kult
AUSTRALIA