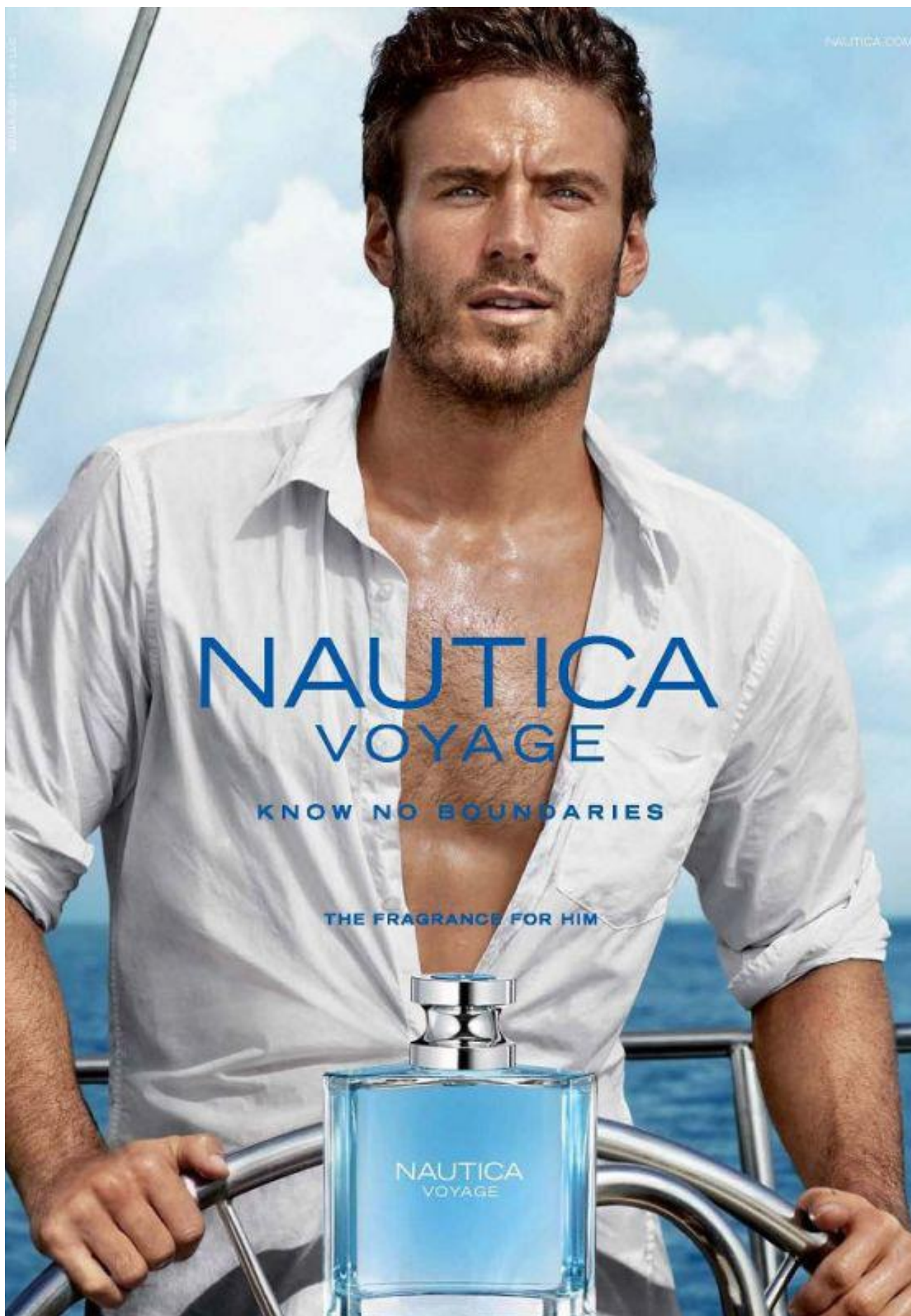


JOE WEIR



JOE WEIR

NAUTICA.COM

NAUTICA  
VOYAGE

KNOW NO BOUNDARIES

THE FRAGRANCE FOR HIM

NAUTICA  
VOYAGE

HEIGHT 183 / 6'0" | WAIST 81 / 32 | HAIR BROWN | EYES BLUE | SHOES 44.5 / 10.5 | SUIT 50 / 40

kult  
AUSTRALIA

# JOE WEIR



HEIGHT 183 / 6'0" | WAIST 81 / 32 | HAIR BROWN | EYES BLUE | SHOES 44.5 / 10.5 | SUIT 50 / 40

kult  
AUSTRALIA

# JOE WEIR



HEIGHT 183 / 6'0" | WAIST 81 / 32 | HAIR BROWN | EYES BLUE | SHOES 44.5 / 10.5 | SUIT 50 / 40

kult  
AUSTRALIA



# JOE WEIR



## Summer Love

Un Don Juan y su bella amante  
estampan con texturas, *prints* y  
calor esta seductora aventura

Fotógrafo Dennis Leepold  
Realización Mei Ling Alvarez  
Estilista Dani Michelle

DE COMPLEXES  
En el *lookbook* de *Summer Love*, los modelos de *Summer Love* se muestran en su mejor forma. En esta ocasión, el modelo de *Summer Love* se muestra en su mejor forma. En esta ocasión, el modelo de *Summer Love* se muestra en su mejor forma.

HEIGHT 183 / 6'0" | WAIST 81 / 32 | HAIR BROWN | EYES BLUE | SHOES 44.5 / 10.5 | SUIT 50 / 40

kult  
AUSTRALIA



# JOE WEIR



HEIGHT 183 / 6'0" | WAIST 81 / 32 | HAIR BROWN | EYES BLUE | SHOES 44.5 / 10.5 | SUIT 50 / 40

kult  
AUSTRALIA



# JOE WEIR



HEIGHT 183 / 6'0" | WAIST 81 / 32 | HAIR BROWN | EYES BLUE | SHOES 44.5 / 10.5 | SUIT 50 / 40

kult  
AUSTRALIA



# JOE WEIR



HEIGHT 183 / 6'0" | WAIST 81 / 32 | HAIR BROWN | EYES BLUE | SHOES 44.5 / 10.5 | SUIT 50 / 40

kult  
AUSTRALIA



# JOE WEIR



HEIGHT 183 / 6'0" | WAIST 81 / 32 | HAIR BROWN | EYES BLUE | SHOES 44.5 / 10.5 | SUIT 50 / 40

kult  
AUSTRALIA



# JOE WEIR



HEIGHT 183 / 6'0" | WAIST 81 / 32 | HAIR BROWN | EYES BLUE | SHOES 44.5 / 10.5 | SUIT 50 / 40

kult  
AUSTRALIA



David Jones jacket, \$750  
 Rock & Republic at Left  
 Fuelbox jeans, \$1,000  
 Prada shirt, \$1,200  
 J. Crew Paul Jones  
 jacket, \$1,000  
 J. Crew shirt, \$1,000  
 Benetton shirt, \$1,000  
 Rocked up Hollywood  
 at \$2,000, \$1,000 Paul  
 Smith sunglasses, \$1,000  
 A. & P. jacket, \$1,000

kult  
AUSTRALIA



JOE WEIR



HEIGHT 183 / 6'0" | WAIST 81 / 32 | HAIR BROWN | EYES BLUE | SHOES 44.5 / 10.5 | SUIT 50 / 40

kult  
AUSTRALIA



# JOE WEIR



HEIGHT 183 / 6'0" | WAIST 81 / 32 | HAIR BROWN | EYES BLUE | SHOES 44.5 / 10.5 | SUIT 50 / 40

kult  
AUSTRALIA

# JOE WEIR

## ENTRE SUSURROS

En él: chaqueta, playera, jeans *distressed* y alpargatas, todo de Dolce & Gabbana; reloj de Bulgari; en ella: romper, top ornamentado, sandalias y bolsa de cuero con aplicaciones florales, de Fendi; joyería de Bulgari; anillo en oro con diamantes, de Lana Jewelry.



HEIGHT 183 / 6'0" | WAIST 81 / 32 | HAIR BROWN | EYES BLUE | SHOES 44.5 / 10.5 | SUIT 50 / 40

kult  
AUSTRALIA



# JOE WEIR



## TIEMPO A SOLAS

En él: jumpsuit de Givenchy by Riccardo Tisci; en ella: traje de baño, de Norma Kamali; falda, collar y brazaletes, todo de Chanel; pendientes y anillo, de Lana Jewelry. En página opuesta: en él: total look, de Louis Vuitton; en ella: traje de baño, de Eres; abrigo de Ermanno Scervino; sombrero de Clyde.

HEIGHT 183 / 6'0" | WAIST 81 / 32 | HAIR BROWN | EYES BLUE | SHOES 44.5 / 10.5 | SUIT 50 / 40

kult  
AUSTRALIA

# JOE WEIR



This page: T-shirt, \$35, Banana Republic. Pants, \$460, Christopher Kane. Sneakers, \$475, Common Projects. Opposite page: Shirt, \$175, Hugo.

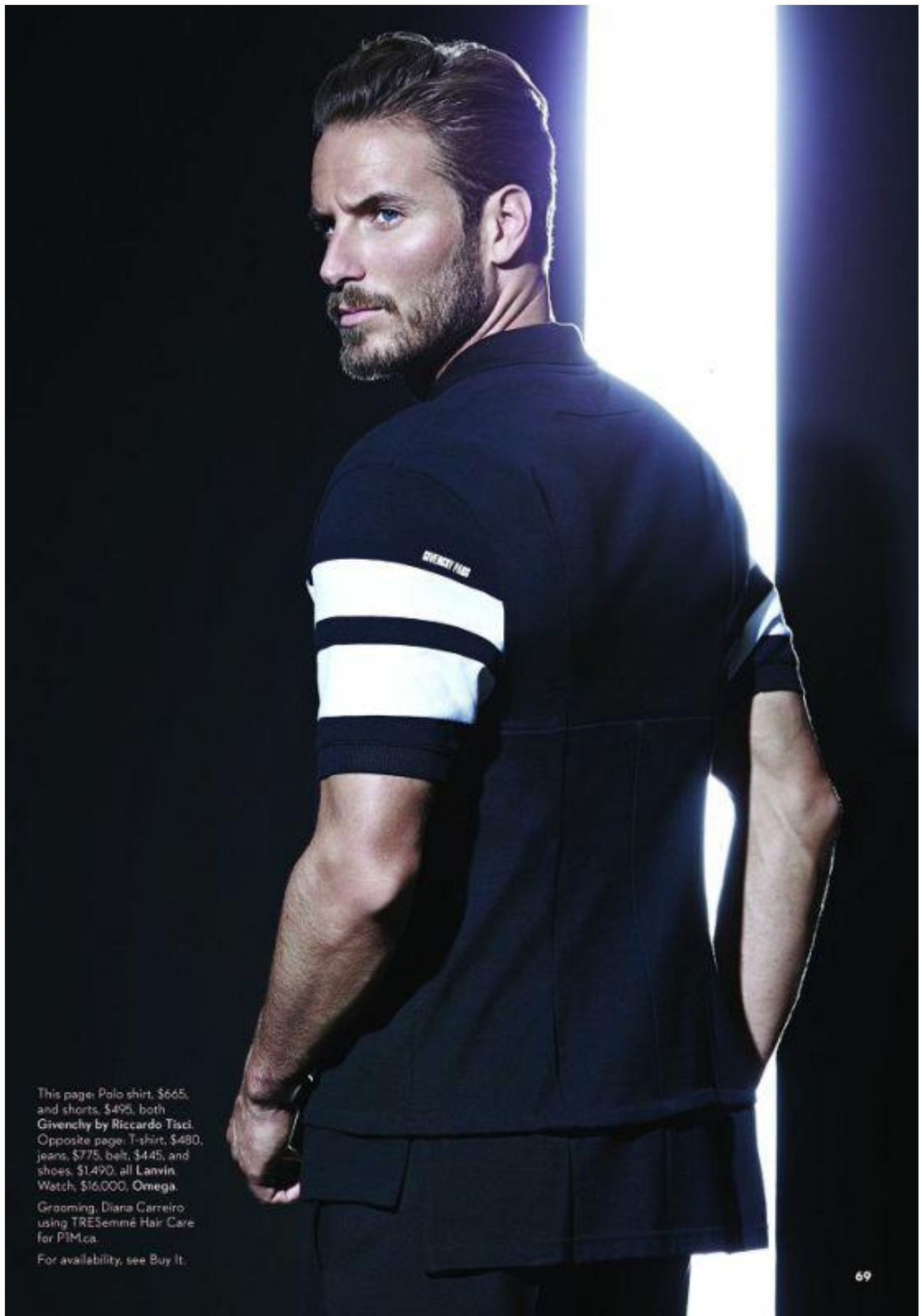
65

HEIGHT 183 / 6'0" | WAIST 81 / 32 | HAIR BROWN | EYES BLUE | SHOES 44.5 / 10.5 | SUIT 50 / 40

kult  
AUSTRALIA



# JOE WEIR



This page: Polo shirt, \$665, and shorts, \$495, both Givenchy by Riccardo Tisci. Opposite page: T-shirt, \$480, jeans, \$775, belt, \$445, and shoes, \$1,490, all Lanvin. Watch, \$16,000, Omega.

Grooming, Diana Carreiro using TRE5emmé Hair Care for P1M.ca.

For availability, see Buy It.

69

HEIGHT 183 / 6'0" | WAIST 81 / 32 | HAIR BROWN | EYES BLUE | SHOES 44.5 / 10.5 | SUIT 50 / 40

kult  
AUSTRALIA

# JOE WEIR



HEIGHT 183 / 6'0" | WAIST 81 / 32 | HAIR BROWN | EYES BLUE | SHOES 44.5 / 10.5 | SUIT 50 / 40

kult  
AUSTRALIA



# JOE WEIR



**HAPPY HOUR!**  
En él: camisa de  
silueta retro y  
playera, ambas de  
Valentino; pantalón  
de Lanvin; zapatos  
de Etro; en ella: total  
look, de Bottega  
Veneta; sombrero  
de Gladys Tamez  
Millinery; sandalias  
de Giuseppe Zanotti  
Design; joyería de  
Lana Jewelry.

HEIGHT 183 / 6'0" | WAIST 81 / 32 | HAIR BROWN | EYES BLUE | SHOES 44.5 / 10.5 | SUIT 50 / 40

kult  
AUSTRALIA

# JOE WEIR



HEIGHT 183 / 6'0" | WAIST 81 / 32 | HAIR BROWN | EYES BLUE | SHOES 44.5 / 10.5 | SUIT 50 / 40

kult  
AUSTRALIA



# JOE WEIR



HEIGHT 183 / 6'0" | WAIST 81 / 32 | HAIR BROWN | EYES BLUE | SHOES 44.5 / 10.5 | SUIT 50 / 40

kult  
AUSTRALIA

# JOE WEIR

This Page:  
*Trousers* Elvine  
*Shirt* The House Of Nines  
*Jacket* Christian Lacroix

Opposite Page:  
*Top* Steven Tai  
*Boxers* Calvin Klein  
*Jacket* Elvine  
*Boots* CAT



HEIGHT 183 / 6'0" | WAIST 81 / 32 | HAIR BROWN | EYES BLUE | SHOES 44.5 / 10.5 | SUIT 50 / 40

kult  
AUSTRALIA



# JOE WEIR

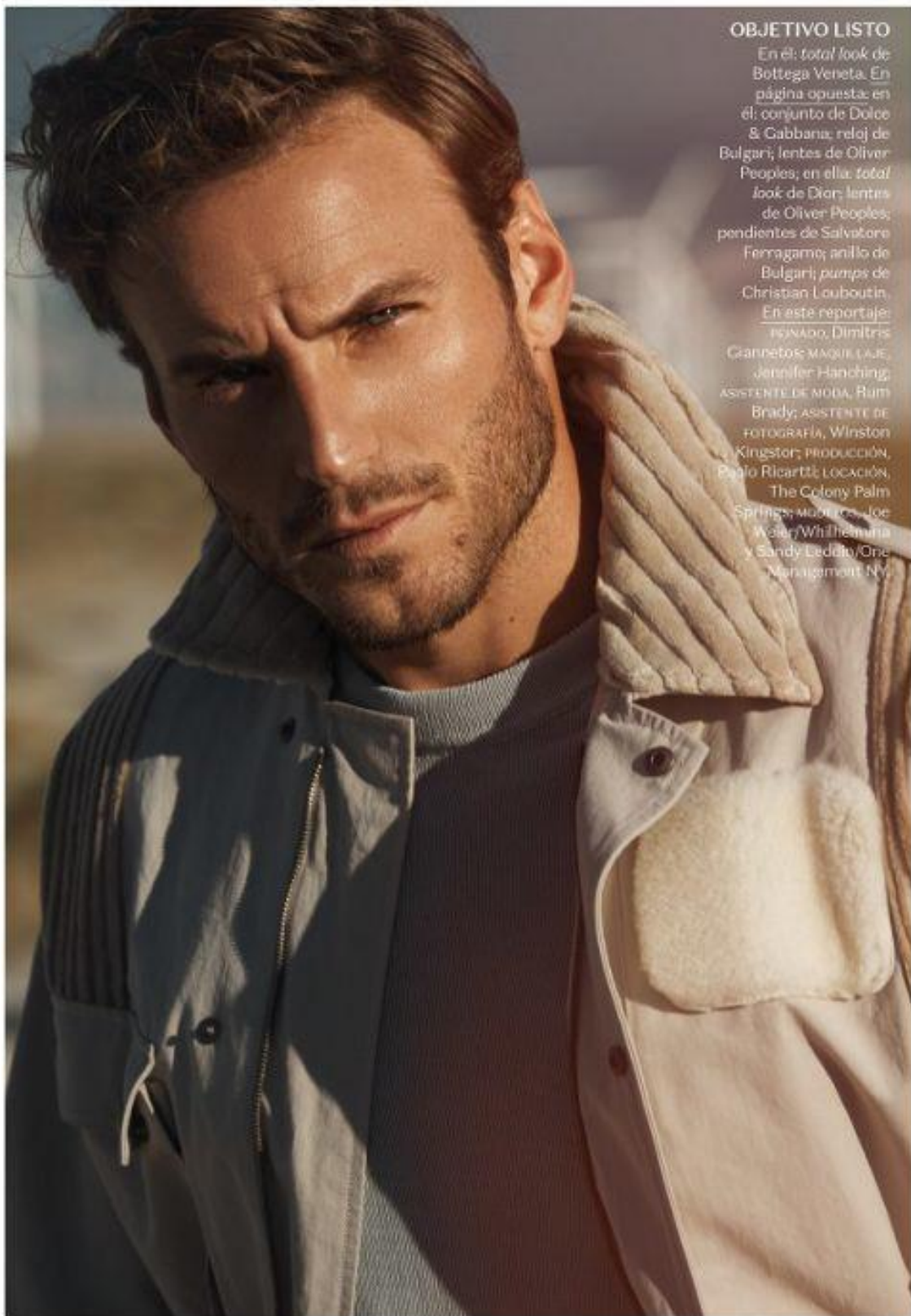
This Page:  
*Top D.I.E*  
*Boxers Calvin Klein*



HEIGHT 183 / 6'0" | WAIST 81 / 32 | HAIR BROWN | EYES BLUE | SHOES 44.5 / 10.5 | SUIT 50 / 40

kult  
AUSTRALIA

# JOE WEIR



## OBJETIVO LISTO

En él: *total look* de Bottega Veneta. En página opuesta: en él: conjunto de Dolce & Gabbana; reloj de Bulgari; lentes de Oliver Peoples; en ella: *total look* de Dior; lentes de Oliver Peoples; pendientes de Salvatore Ferragamo; anillo de Bulgari; *pumps* de Christian Louboutin. En este reportaje: PEINADO, Dimitris Gannetos; MAQUILLAJE, Jennifer Handring; ASISTENTE DE MODA, Rum Brady; ASISTENTE DE FOTOGRAFÍA, Winston Kingston; PRODUCCIÓN, Paolo Ricartti; LOCACIÓN, The Colony Palm Springs; MODELOS, Joe Weir/Whittemana y Sandy Leddo/One Management NY.

HEIGHT 183 / 6'0" | WAIST 81 / 32 | HAIR BROWN | EYES BLUE | SHOES 44.5 / 10.5 | SUIT 50 / 40

kult  
AUSTRALIA



# JOE WEIR



HEIGHT 183 / 6'0" | WAIST 81 / 32 | HAIR BROWN | EYES BLUE | SHOES 44.5 / 10.5 | SUIT 50 / 40

kult  
AUSTRALIA