

MARK COX



HEIGHT 188 / 6'2" | CHEST 96 / 38 | WAIST 82 / 32.5 | HAIR BROWN | EYES GREEN | SHOES 45 / 11

kult
AUSTRALIA

MARK COX



HEIGHT 188 / 6'2" | CHEST 96 / 38 | WAIST 82 / 32.5 | HAIR BROWN | EYES GREEN | SHOES 45 / 11

kult
AUSTRALIA

MARK COX



HEIGHT 188 / 6'2" | CHEST 96 / 38 | WAIST 82 / 32.5 | HAIR BROWN | EYES GREEN | SHOES 45 / 11

kult
AUSTRALIA

MARK COX



HEIGHT 188 / 6'2" | CHEST 96 / 38 | WAIST 82 / 32.5 | HAIR BROWN | EYES GREEN | SHOES 45 / 11

kult
AUSTRALIA

MARK COX



HEIGHT 188 / 6'2" | CHEST 96 / 38 | WAIST 82 / 32.5 | HAIR BROWN | EYES GREEN | SHOES 45 / 11

kult
AUSTRALIA

MARK COX



HEIGHT 188 / 6'2" | CHEST 96 / 38 | WAIST 82 / 32.5 | HAIR BROWN | EYES GREEN | SHOES 45 / 11

kult
AUSTRALIA

MARK COX



HEIGHT 188 / 6'2" | CHEST 96 / 38 | WAIST 82 / 32.5 | HAIR BROWN | EYES GREEN | SHOES 45 / 11

kult
AUSTRALIA

MARK COX



HEIGHT 188 / 6'2" | CHEST 96 / 38 | WAIST 82 / 32.5 | HAIR BROWN | EYES GREEN | SHOES 45 / 11

kult
AUSTRALIA

MARK COX



HEIGHT 188 / 6'2" | CHEST 96 / 38 | WAIST 82 / 32.5 | HAIR BROWN | EYES GREEN | SHOES 45 / 11

kult
AUSTRALIA

MARK COX



HEIGHT 188 / 6'2" | CHEST 96 / 38 | WAIST 82 / 32.5 | HAIR BROWN | EYES GREEN | SHOES 45 / 11

kult
AUSTRALIA

MARK COX



HEIGHT 188 / 6'2" | CHEST 96 / 38 | WAIST 82 / 32.5 | HAIR BROWN | EYES GREEN | SHOES 45 / 11

kult
AUSTRALIA

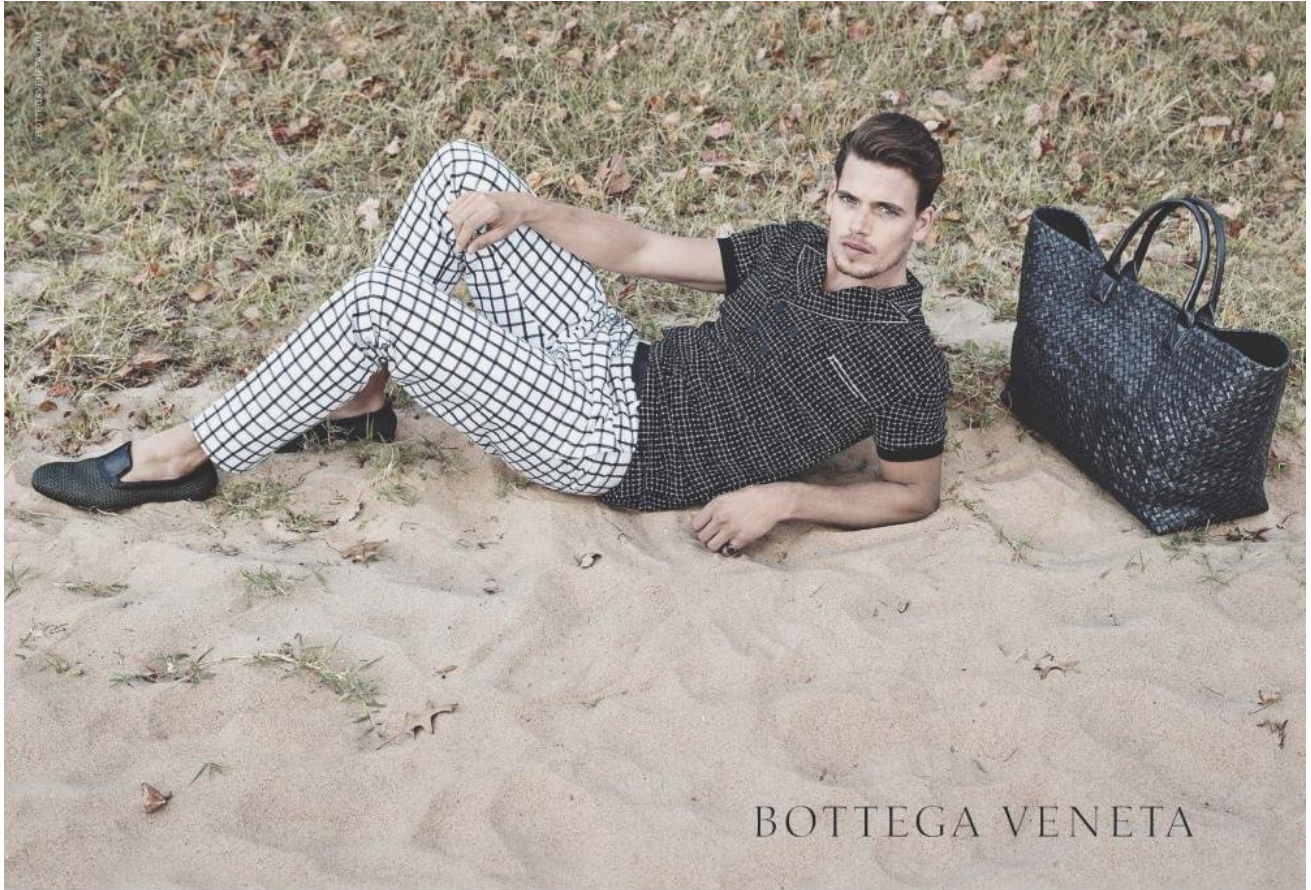
MARK COX



HEIGHT 188 / 6'2" | CHEST 96 / 38 | WAIST 82 / 32.5 | HAIR BROWN | EYES GREEN | SHOES 45 / 11

kult
AUSTRALIA

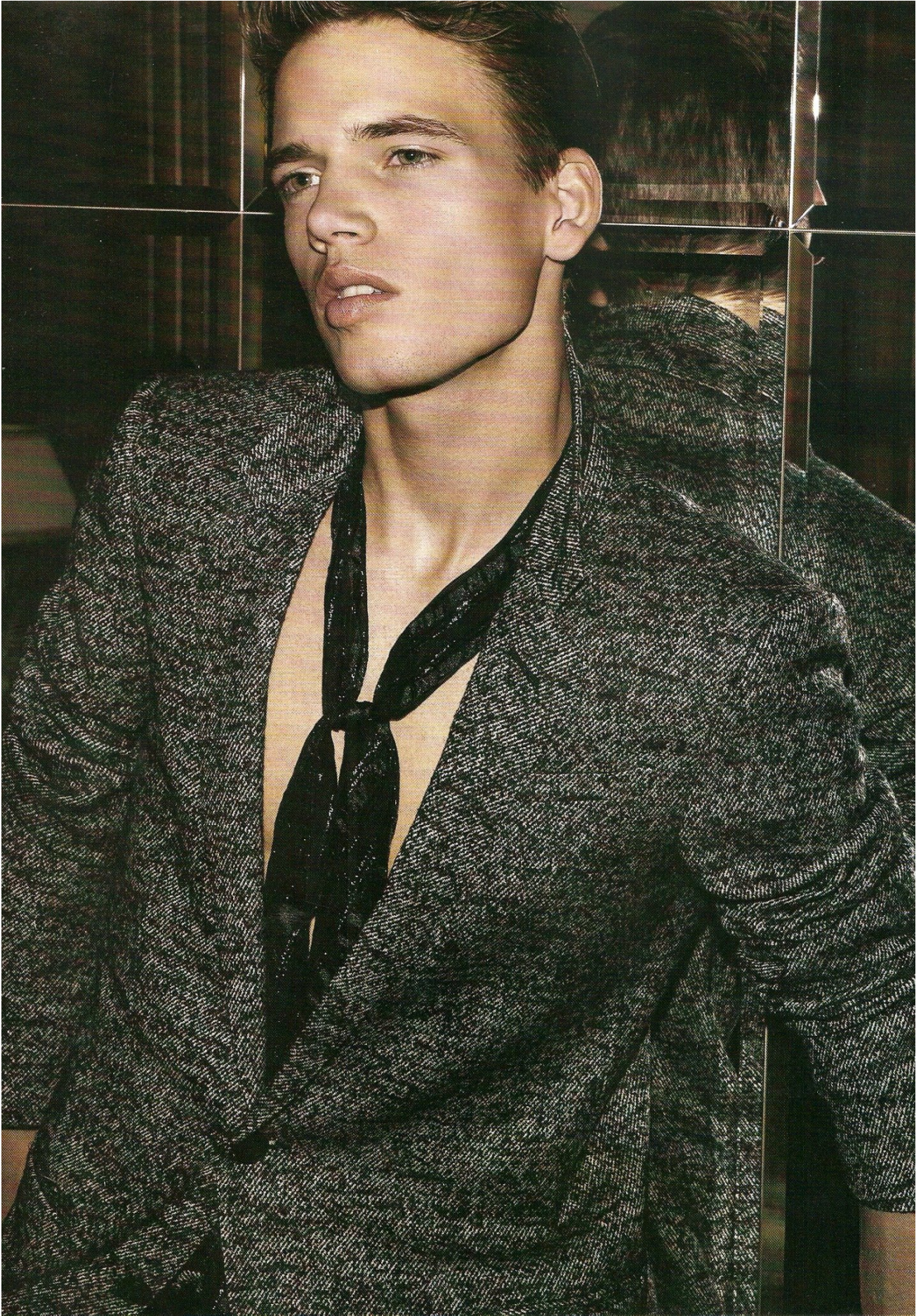
MARK COX



HEIGHT 188 / 6'2" | CHEST 96 / 38 | WAIST 82 / 32.5 | HAIR BROWN | EYES GREEN | SHOES 45 / 11

kult
AUSTRALIA

MARK COX



HEIGHT 188 / 6'2" | CHEST 96 / 38 | WAIST 82 / 32.5 | HAIR BROWN | EYES GREEN | SHOES 45 / 11

kult
AUSTRALIA

MARK COX



HEIGHT 188 / 6'2" | CHEST 96 / 38 | WAIST 82 / 32.5 | HAIR BROWN | EYES GREEN | SHOES 45 / 11

kult
AUSTRALIA

MARK COX



HEIGHT 188 / 6'2" | CHEST 96 / 38 | WAIST 82 / 32.5 | HAIR BROWN | EYES GREEN | SHOES 45 / 11

kult
AUSTRALIA

MARK COX



HEIGHT 188 / 6'2" | CHEST 96 / 38 | WAIST 82 / 32.5 | HAIR BROWN | EYES GREEN | SHOES 45 / 11

kult
AUSTRALIA

MARK COX



HEIGHT 188 / 6'2" | CHEST 96 / 38 | WAIST 82 / 32.5 | HAIR BROWN | EYES GREEN | SHOES 45 / 11

kult
AUSTRALIA

MARK COX



HEIGHT 188 / 6'2" | CHEST 96 / 38 | WAIST 82 / 32.5 | HAIR BROWN | EYES GREEN | SHOES 45 / 11

kult
AUSTRALIA

MARK COX



HEIGHT 188 / 6'2" | CHEST 96 / 38 | WAIST 82 / 32.5 | HAIR BROWN | EYES GREEN | SHOES 45 / 11

kult
AUSTRALIA

MARK COX



ck
Calvin Klein

HEIGHT 188 / 6'2" | CHEST 96 / 38 | WAIST 82 / 32.5 | HAIR BROWN | EYES GREEN | SHOES 45 / 11

kult
AUSTRALIA

MARK COX

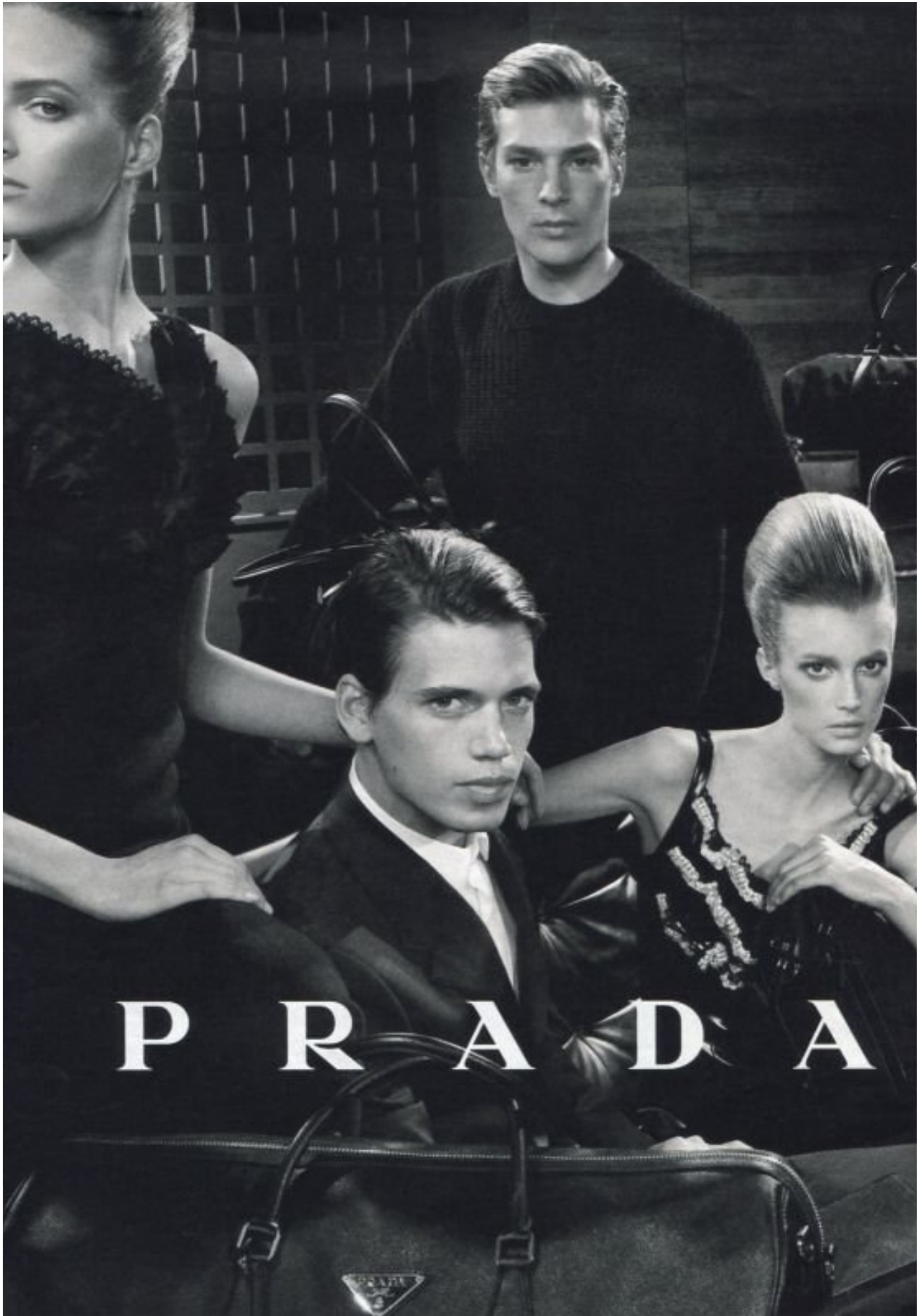


ck
Calvin Klein
swiss made

HEIGHT 188 / 6'2" | CHEST 96 / 38 | WAIST 82 / 32.5 | HAIR BROWN | EYES GREEN | SHOES 45 / 11

kult
AUSTRALIA

MARK COX



HEIGHT 188 / 6'2" | CHEST 96 / 38 | WAIST 82 / 32.5 | HAIR BROWN | EYES GREEN | SHOES 45 / 11

kult
AUSTRALIA

MARK COX



HEIGHT 188 / 6'2" | CHEST 96 / 38 | WAIST 82 / 32.5 | HAIR BROWN | EYES GREEN | SHOES 45 / 11

kult
AUSTRALIA

MARK COX



HEIGHT 188 / 6'2" | CHEST 96 / 38 | WAIST 82 / 32.5 | HAIR BROWN | EYES GREEN | SHOES 45 / 11

kult
AUSTRALIA

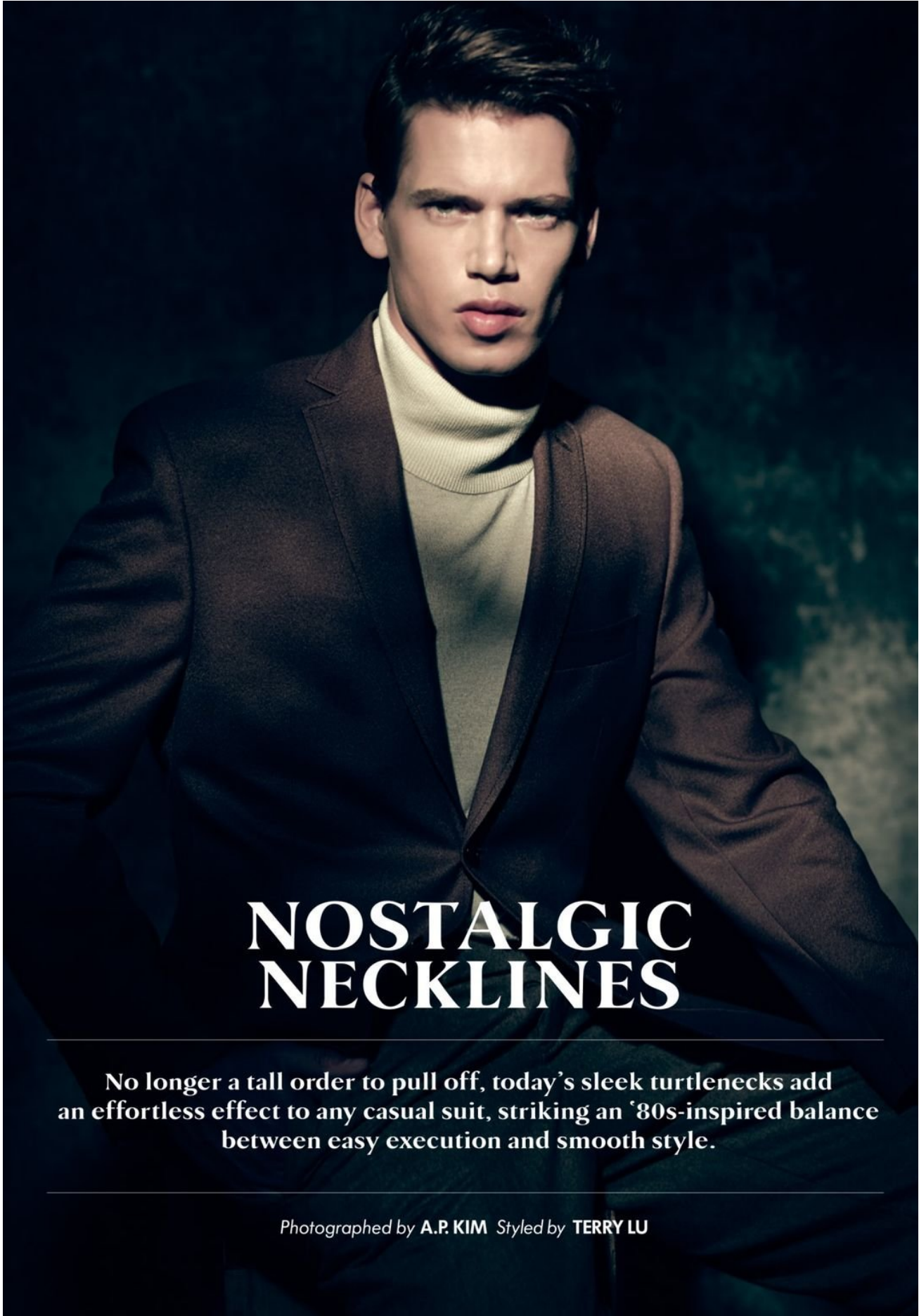
MARK COX



HEIGHT 188 / 6'2" | CHEST 96 / 38 | WAIST 82 / 32.5 | HAIR BROWN | EYES GREEN | SHOES 45 / 11

kult
AUSTRALIA

MARK COX



NOSTALGIC NECKLINES

No longer a tall order to pull off, today's sleek turtlenecks add an effortless effect to any casual suit, striking an '80s-inspired balance between easy execution and smooth style.

Photographed by A.P. KIM *Styled by* TERRY LU

HEIGHT 188 / 6'2" | CHEST 96 / 38 | WAIST 82 / 32.5 | HAIR BROWN | EYES GREEN | SHOES 45 / 11

kult
AUSTRALIA

MARK COX



HEIGHT 188 / 6'2" | CHEST 96 / 38 | WAIST 82 / 32.5 | HAIR BROWN | EYES GREEN | SHOES 45 / 11

kult
AUSTRALIA

MARK COX



HEIGHT 188 / 6'2" | CHEST 96 / 38 | WAIST 82 / 32.5 | HAIR BROWN | EYES GREEN | SHOES 45 / 11

kult
AUSTRALIA

MARK COX



GUCCI

REFLECT AND CONNECT AT GUCCIEYEWEB.COM

HEIGHT 188 / 6'2" | CHEST 96 / 38 | WAIST 82 / 32.5 | HAIR BROWN | EYES GREEN | SHOES 45 / 11

kult
AUSTRALIA

MARK COX



HEIGHT 188 / 6'2" | CHEST 96 / 38 | WAIST 82 / 32.5 | HAIR BROWN | EYES GREEN | SHOES 45 / 11

kult
AUSTRALIA

MARK COX

57



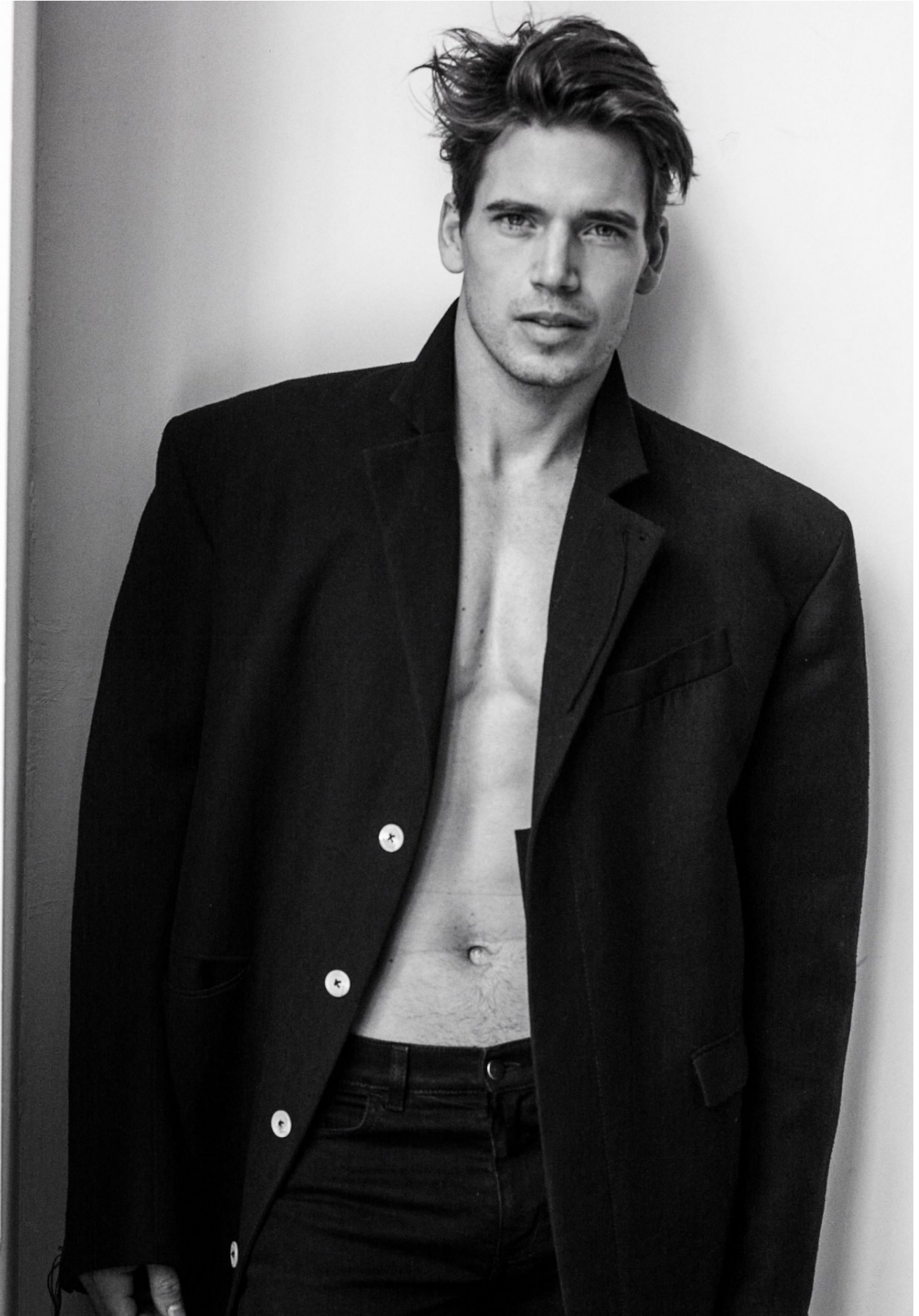
Explorer jacket, £3,100, Louis Vuitton
(uk.louisvuitton.com); shirt, £650, Ermenegildo
Zegna (zegna.com); tie, £120, Hermès
(uk.hermes.com); backpack, as before

Model Mark Cox at DNA Models
Grooming Leon Gorman at Brydges MacKinney
Fashion assistant Sydney Rose Thomas

HEIGHT 188 / 6'2" | CHEST 96 / 38 | WAIST 82 / 32.5 | HAIR BROWN | EYES GREEN | SHOES 45 / 11

kult
AUSTRALIA

MARK COX



HEIGHT 188 / 6'2" | CHEST 96 / 38 | WAIST 82 / 32.5 | HAIR BROWN | EYES GREEN | SHOES 45 / 11

kult
AUSTRALIA

MARK COX



HEIGHT 188 / 6'2" | CHEST 96 / 38 | WAIST 82 / 32.5 | HAIR BROWN | EYES GREEN | SHOES 45 / 11

kult
AUSTRALIA