

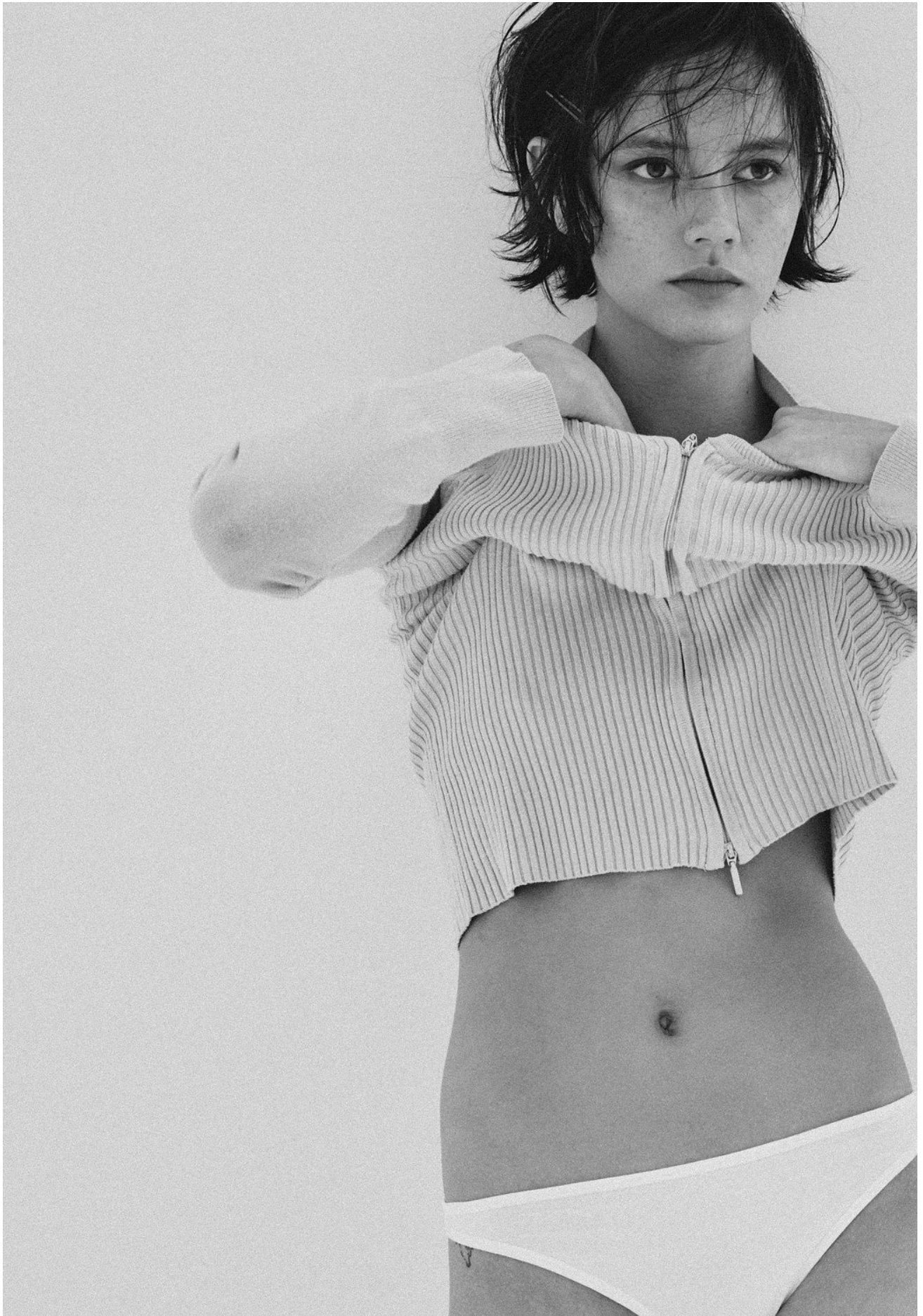
TIAMA TILBEE



HEIGHT 172 / 5'7.5" | BUST 79 / 31 / A | WAIST 64 / 25 | HIPS 89 / 35" | HAIR BROWN | EYES HAZEL | SHOES 7 AU / 38 EU

kult
AUSTRALIA

TIAMA TILBEE



HEIGHT 172 / 5'7.5" | BUST 79 / 31 / A | WAIST 64 / 25 | HIPS 89 / 35" | HAIR BROWN | EYES HAZEL | SHOES 7 AU / 38 EU

kult
AUSTRALIA

TIAMA TILBEE



HEIGHT 172 / 5'7.5" | BUST 79 / 31 / A | WAIST 64 / 25 | HIPS 89 / 35" | HAIR BROWN | EYES HAZEL | SHOES 7 AU / 38 EU

kult
AUSTRALIA

TIAMA TILBEE



HEIGHT 172 / 5'7.5" | BUST 79 / 31 / A | WAIST 64 / 25 | HIPS 89 / 35" | HAIR BROWN | EYES HAZEL | SHOES 7 AU / 38 EU

kult
AUSTRALIA

TIAMA TILBEE



HEIGHT 172 / 5'7.5" | BUST 79 / 31 / A | WAIST 64 / 25 | HIPS 89 / 35" | HAIR BROWN | EYES HAZEL | SHOES 7 AU / 38 EU

kult
AUSTRALIA

TIAMA TILBEE



HEIGHT 172 / 5'7.5" | BUST 79 / 31 / A | WAIST 64 / 25 | HIPS 89 / 35" | HAIR BROWN | EYES HAZEL | SHOES 7 AU / 38 EU

kult
AUSTRALIA

TIAMA TILBEE



*We're going on
a bear hunt*

Burberry has a long history of dressing explorers. For his debut collection, chief creative officer Daniel Lee taps the heritage brand's archives for pieces that infuse bold colours and patterns with a spirit of adventure

Photographed by LEVON BAIRD Styled by TEANNE VICKERS

HEIGHT 172 / 5'7.5" | BUST 79 / 31 / A | WAIST 64 / 25 | HIPS 89 / 35" | HAIR BROWN | EYES HAZEL | SHOES 7 AU / 38 EU

kult
AUSTRALIA

TIAMA TILBEE



Opposite page: Burberry shirt, \$8900, skirt, \$4850, and shoes, \$1990 (worn throughout).
This page: Burberry dress, \$32,000, and shoes, \$3350. Models: Liana Lottie at Priscillas Model Management and Tiama Tilbee at Kult Models.
Hair by Kyre at AP-Reps; makeup by Sean Brady. Shot on location at The EDDY Multi-Space, by Right Angle.

HEIGHT 172 / 5'7.5" | BUST 79 / 31 / A | WAIST 64 / 25 | HIPS 89 / 35" | HAIR BROWN | EYES HAZEL | SHOES 7 AU / 38 EU

kult
AUSTRALIA

TIAMA TILBEE



Burberry top, \$1450, pants, \$3290, shoes, \$1890, and rings, all price on application. Opposite page: Burberry top, \$2790, skirt, \$3150, tights, \$1000, shoes, \$2450, ring (top), and necklace worn as ring, both price on application. Also shown: Fearon chair, price on application, available at Curated Spaces.

HEIGHT 172 / 5'7.5" | BUST 79 / 31 / A | WAIST 64 / 25 | HIPS 89 / 35" | HAIR BROWN | EYES HAZEL | SHOES 7 AU / 38 EU

kult
AUSTRALIA

TIAMA TILBEE



HEIGHT 172 / 5'7.5" | BUST 79 / 31 / A | WAIST 64 / 25 | HIPS 89 / 35" | HAIR BROWN | EYES HAZEL | SHOES 7 AU / 38 EU

kult
AUSTRALIA

TIAMA TILBEE



HEIGHT 172 / 5'7.5" | BUST 79 / 31 / A | WAIST 64 / 25 | HIPS 89 / 35" | HAIR BROWN | EYES HAZEL | SHOES 7 AU / 38 EU

kult
AUSTRALIA

TIAMA TILBEE



HEIGHT 172 / 5'7.5" | BUST 79 / 31 / A | WAIST 64 / 25 | HIPS 89 / 35" | HAIR BROWN | EYES HAZEL | SHOES 7 AU / 38 EU

kult
AUSTRALIA

TIAMA TILBEE



HEIGHT 172 / 5'7.5" | BUST 79 / 31 / A | WAIST 64 / 25 | HIPS 89 / 35" | HAIR BROWN | EYES HAZEL | SHOES 7 AU / 38 EU

kult
AUSTRALIA

TIAMA TILBEE



HEIGHT 172 / 5'7.5" | BUST 79 / 31 / A | WAIST 64 / 25 | HIPS 89 / 35" | HAIR BROWN | EYES HAZEL | SHOES 7 AU / 38 EU

kult
AUSTRALIA

TIAMA TILBEE



HEIGHT 172 / 5'7.5" | BUST 79 / 31 / A | WAIST 64 / 25 | HIPS 89 / 35" | HAIR BROWN | EYES HAZEL | SHOES 7 AU / 38 EU

kult
AUSTRALIA

TIAMA TILBEE



HEIGHT 172 / 5'7.5" | BUST 79 / 31 / A | WAIST 64 / 25 | HIPS 89 / 35" | HAIR BROWN | EYES HAZEL | SHOES 7 AU / 38 EU

kult
AUSTRALIA

TIAMA TILBEE



HEIGHT 172 / 5'7.5" | BUST 79 / 31 / A | WAIST 64 / 25 | HIPS 89 / 35" | HAIR BROWN | EYES HAZEL | SHOES 7 AU / 38 EU

kult
AUSTRALIA

TIAMA TILBEE



HEIGHT 172 / 5'7.5" | BUST 79 / 31 / A | WAIST 64 / 25 | HIPS 89 / 35" | HAIR BROWN | EYES HAZEL | SHOES 7 AU / 38 EU

kult
AUSTRALIA

TIAMA TILBEE



HEIGHT 172 / 5'7.5" | BUST 79 / 31 / A | WAIST 64 / 25 | HIPS 89 / 35" | HAIR BROWN | EYES HAZEL | SHOES 7 AU / 38 EU

kult
AUSTRALIA

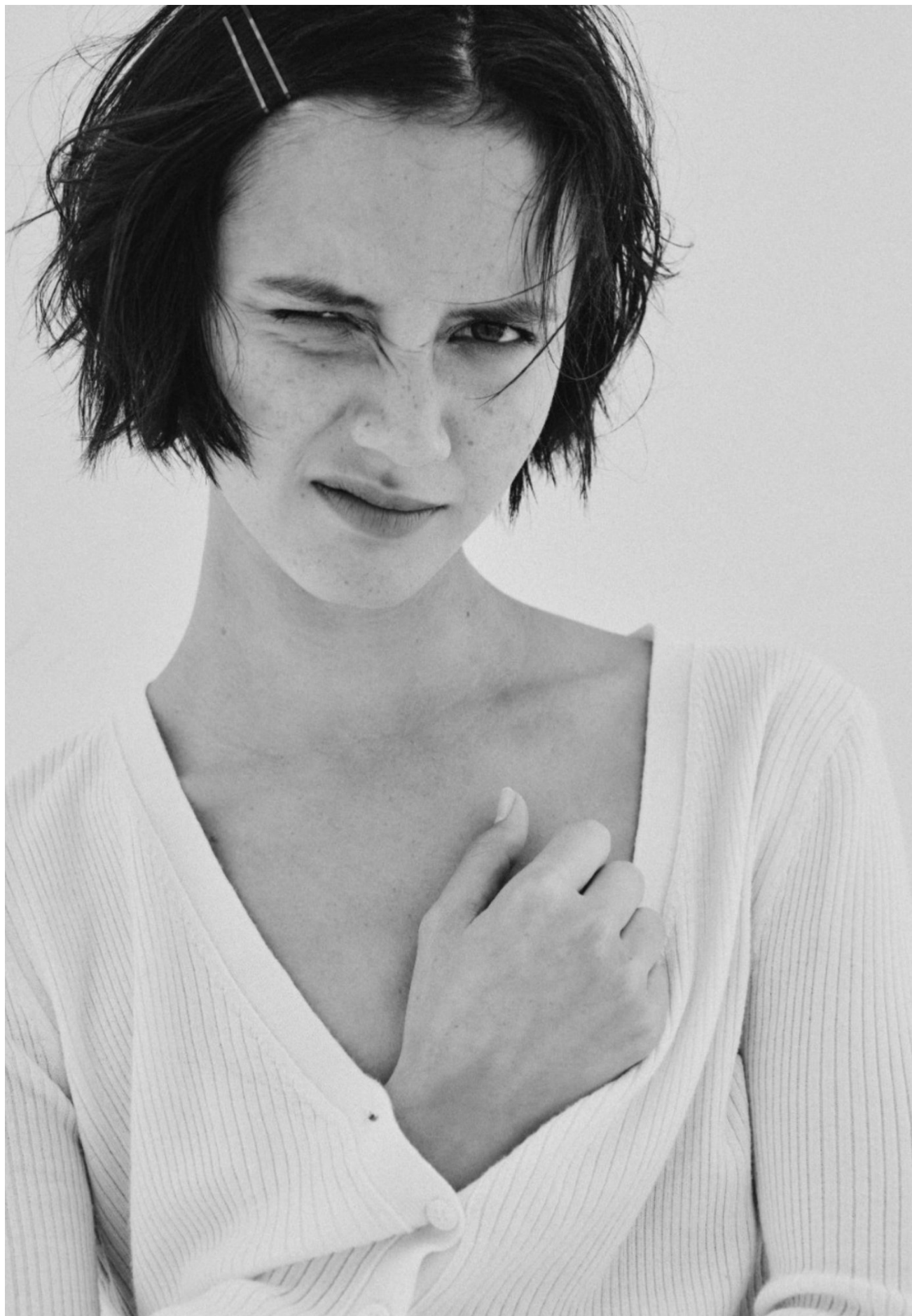
TIAMA TILBEE



HEIGHT 172 / 5'7.5" | BUST 79 / 31 / A | WAIST 64 / 25 | HIPS 89 / 35" | HAIR BROWN | EYES HAZEL | SHOES 7 AU / 38 EU

kult
AUSTRALIA

TIAMA TILBEE



HEIGHT 172 / 5'7.5" | BUST 79 / 31 / A | WAIST 64 / 25 | HIPS 89 / 35" | HAIR BROWN | EYES HAZEL | SHOES 7 AU / 38 EU

kult
AUSTRALIA