

TOMMY MARR



HEIGHT 188 / 6'2" | CHEST 96 / 38 | WAIST 81 / 32 | HAIR BLONDE | EYES BLUE | SHOES 44 / 10
SUIT 50 / 40 | COLLAR 40 / 16

kult
AUSTRALIA

TOMMY MARR



HEIGHT 188 / 6'2" | CHEST 96 / 38 | WAIST 81 / 32 | HAIR BLONDE | EYES BLUE | SHOES 44 / 10
SUIT 50 / 40 | COLLAR 40 / 16

kult
AUSTRALIA

TOMMY MARR



HEIGHT 188 / 6'2" | CHEST 96 / 38 | WAIST 81 / 32 | HAIR BLONDE | EYES BLUE | SHOES 44 / 10
SUIT 50 / 40 | COLLAR 40 / 16

kult
AUSTRALIA

TOMMY MARR



HEIGHT 188 / 6'2" | CHEST 96 / 38 | WAIST 81 / 32 | HAIR BLONDE | EYES BLUE | SHOES 44 / 10
SUIT 50 / 40 | COLLAR 40 / 16

kult
AUSTRALIA

TOMMY MARR



HEIGHT 188 / 6'2" | CHEST 96 / 38 | WAIST 81 / 32 | HAIR BLONDE | EYES BLUE | SHOES 44 / 10
SUIT 50 / 40 | COLLAR 40 / 16

kult
AUSTRALIA

TOMMY MARR



HEIGHT 188 / 6'2" | CHEST 96 / 38 | WAIST 81 / 32 | HAIR BLONDE | EYES BLUE | SHOES 44 / 10
SUIT 50 / 40 | COLLAR 40 / 16

kult
AUSTRALIA

TOMMY MARR



HEIGHT 188 / 6'2" | CHEST 96 / 38 | WAIST 81 / 32 | HAIR BLONDE | EYES BLUE | SHOES 44 / 10
SUIT 50 / 40 | COLLAR 40 / 16

kult
AUSTRALIA

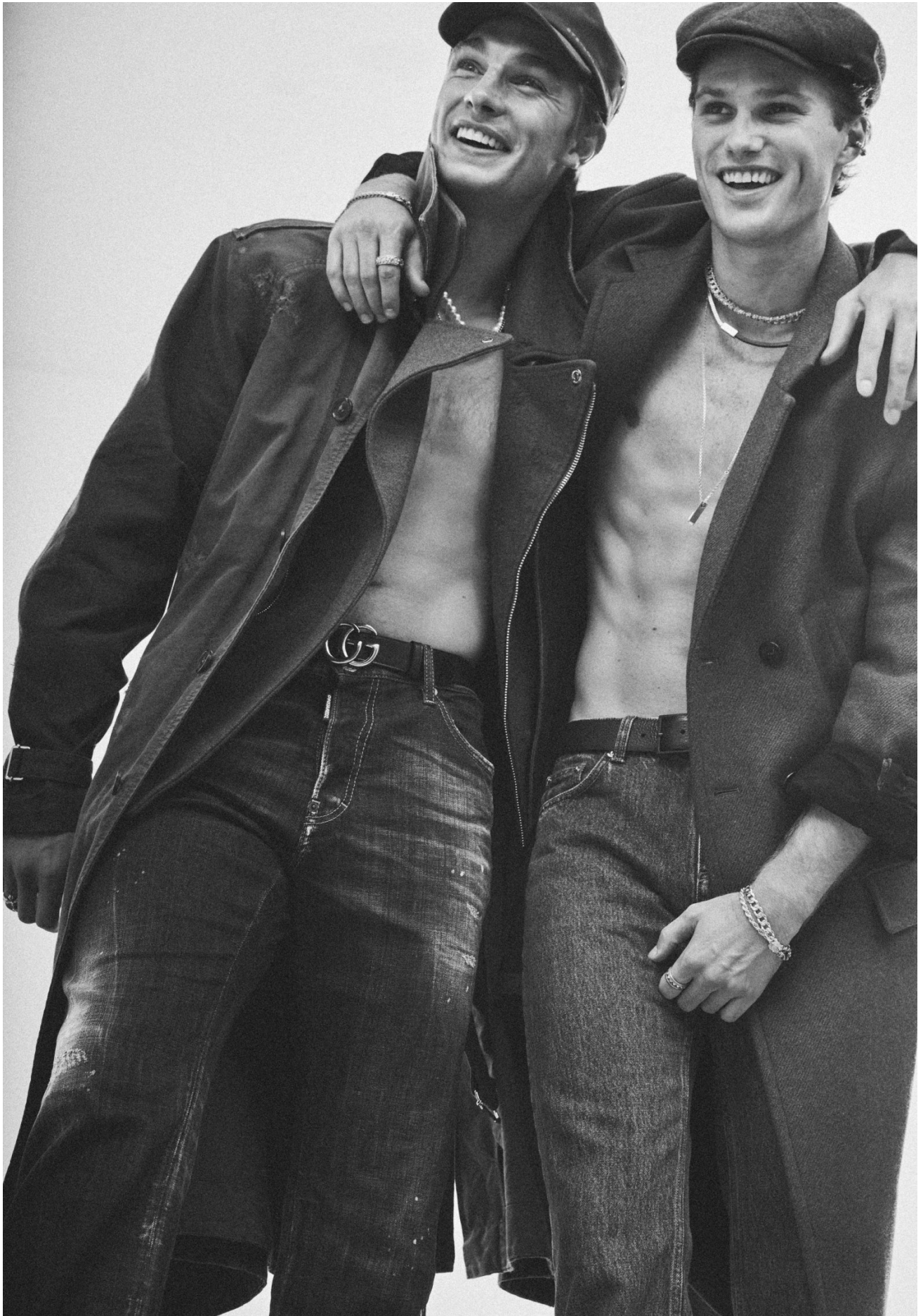
TOMMY MARR



HEIGHT 188 / 6'2" | CHEST 96 / 38 | WAIST 81 / 32 | HAIR BLONDE | EYES BLUE | SHOES 44 / 10
SUIT 50 / 40 | COLLAR 40 / 16

kult
AUSTRALIA

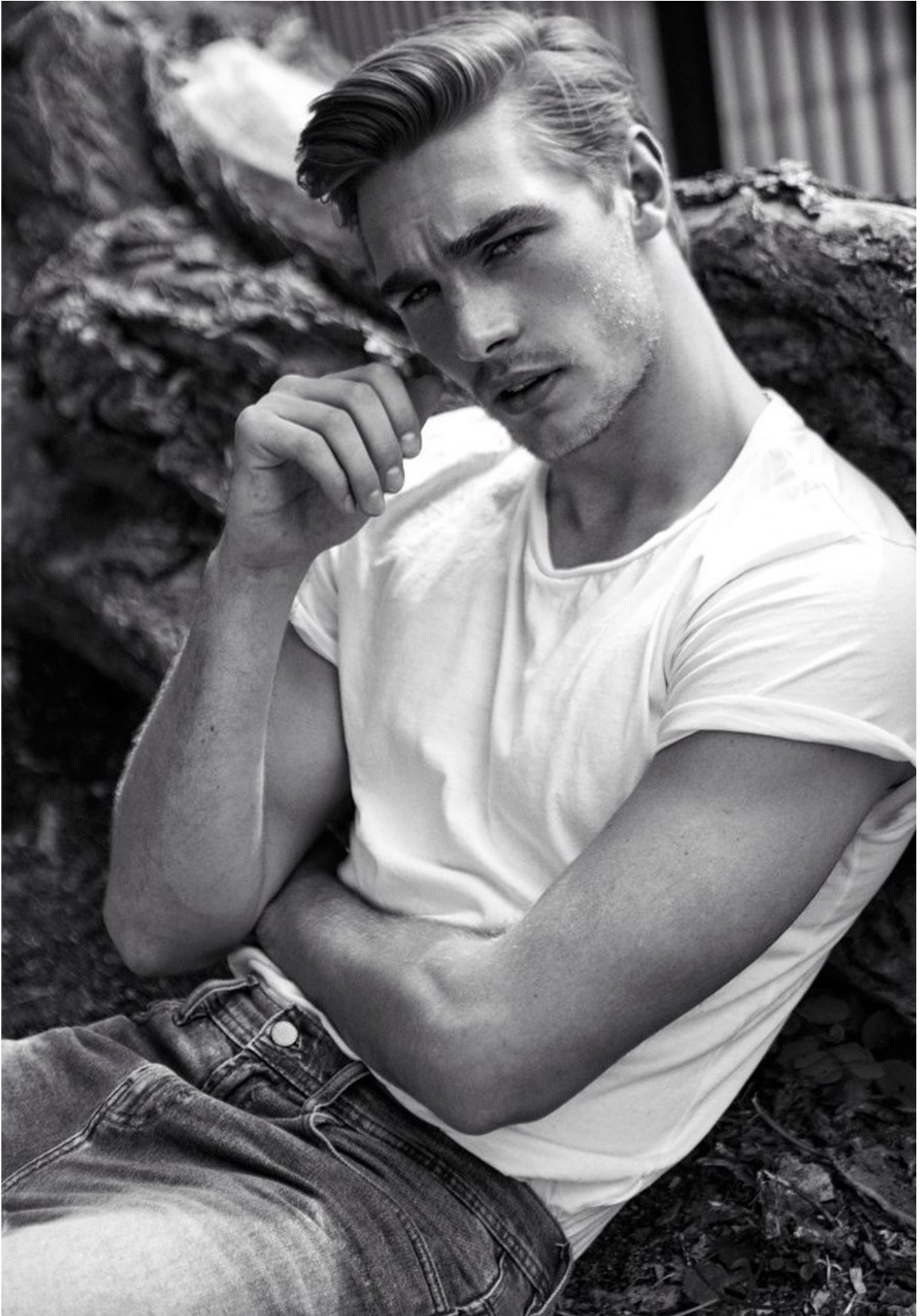
TOMMY MARR



HEIGHT 188 / 6'2" | CHEST 96 / 38 | WAIST 81 / 32 | HAIR BLONDE | EYES BLUE | SHOES 44 / 10
SUIT 50 / 40 | COLLAR 40 / 16

kult
AUSTRALIA

TOMMY MARR



HEIGHT 188 / 6'2" | CHEST 96 / 38 | WAIST 81 / 32 | HAIR BLONDE | EYES BLUE | SHOES 44 / 10
SUIT 50 / 40 | COLLAR 40 / 16

kult
AUSTRALIA

TOMMY MARR



HEIGHT 188 / 6'2" | CHEST 96 / 38 | WAIST 81 / 32 | HAIR BLONDE | EYES BLUE | SHOES 44 / 10
SUIT 50 / 40 | COLLAR 40 / 16

kult
AUSTRALIA

TOMMY MARR



HEIGHT 188 / 6'2" | CHEST 96 / 38 | WAIST 81 / 32 | HAIR BLONDE | EYES BLUE | SHOES 44 / 10
SUIT 50 / 40 | COLLAR 40 / 16

kult
AUSTRALIA

TOMMY MARR



HEIGHT 188 / 6'2" | CHEST 96 / 38 | WAIST 81 / 32 | HAIR BLONDE | EYES BLUE | SHOES 44 / 10
SUIT 50 / 40 | COLLAR 40 / 16

kult
AUSTRALIA

TOMMY MARR



HEIGHT 188 / 6'2" | CHEST 96 / 38 | WAIST 81 / 32 | HAIR BLONDE | EYES BLUE | SHOES 44 / 10
SUIT 50 / 40 | COLLAR 40 / 16

kult
AUSTRALIA

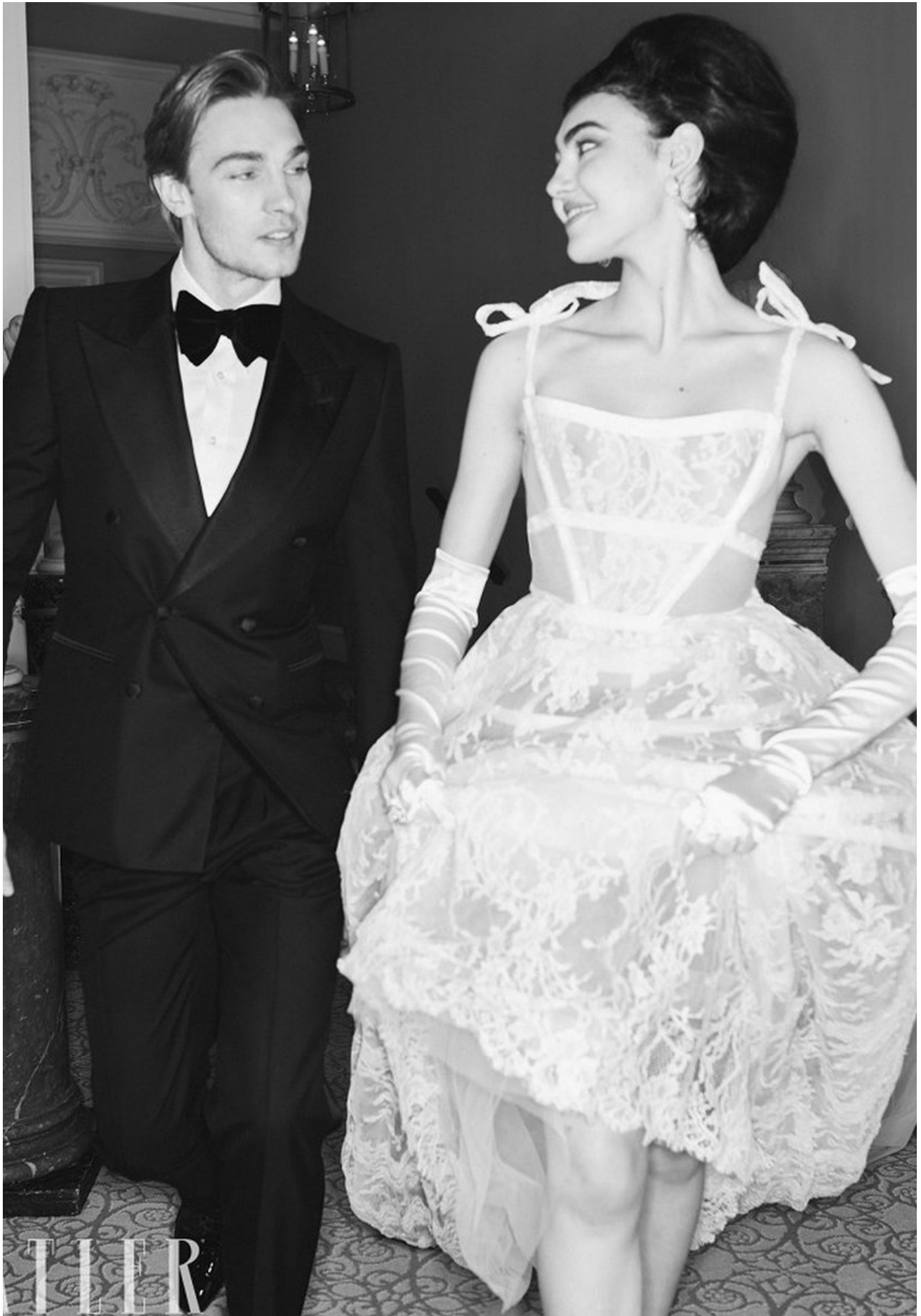
TOMMY MARR



HEIGHT 188 / 6'2" | CHEST 96 / 38 | WAIST 81 / 32 | HAIR BLONDE | EYES BLUE | SHOES 44 / 10
SUIT 50 / 40 | COLLAR 40 / 16

kult
AUSTRALIA

TOMMY MARR



HEIGHT 188 / 6'2" | CHEST 96 / 38 | WAIST 81 / 32 | HAIR BLONDE | EYES BLUE | SHOES 44 / 10
SUIT 50 / 40 | COLLAR 40 / 16

kult
AUSTRALIA

TOMMY MARR



HEIGHT 188 / 6'2" | CHEST 96 / 38 | WAIST 81 / 32 | HAIR BLONDE | EYES BLUE | SHOES 44 / 10
SUIT 50 / 40 | COLLAR 40 / 16

kult
AUSTRALIA

TOMMY MARR



Tank-Top: YVES SAINT LAURENT
Blazer: HUGO BOSS
Glasses: MARC JACOBS BY SAFILO GROUP

Harper's
BAZAAR
THAILAND
MEN

HEIGHT 188 / 6'2" | CHEST 96 / 38 | WAIST 81 / 32 | HAIR BLONDE | EYES BLUE | SHOES 44 / 10
SUIT 50 / 40 | COLLAR 40 / 16

kult
AUSTRALIA

TOMMY MARR

Harper's
BAZAAR
THAILAND
MEN

Tank-Top: YVES SAINT LAURENT
Blazer: HUGO BOSS
Pants: DOLCE & GABBANA
Glasses: MARC JACOBS BY SAFFO GROUP
Jewels: EMANUELE BICOCCI



HEIGHT 188 / 6'2" | CHEST 96 / 38 | WAIST 81 / 32 | HAIR BLONDE | EYES BLUE | SHOES 44 / 10
SUIT 50 / 40 | COLLAR 40 / 16

kult
AUSTRALIA

TOMMY MARR

Shirt: FENDI
Sweater: SALVATORE FERRAGAMO
Cap: STETSON

Harper's
BAZAAR
THAILAND
MEN



HEIGHT 188 / 6'2" | CHEST 96 / 38 | WAIST 81 / 32 | HAIR BLONDE | EYES BLUE | SHOES 44 / 10
SUIT 50 / 40 | COLLAR 40 / 16

kult
AUSTRALIA

TOMMY MARR



HEIGHT 188 / 6'2" | CHEST 96 / 38 | WAIST 81 / 32 | HAIR BLONDE | EYES BLUE | SHOES 44 / 10
SUIT 50 / 40 | COLLAR 40 / 16

kult
AUSTRALIA

TOMMY MARR



Shirt: BERLUTI
Jacket and Pants: FENDI

HEIGHT 188 / 6'2" | CHEST 96 / 38 | WAIST 81 / 32 | HAIR BLONDE | EYES BLUE | SHOES 44 / 10
SUIT 50 / 40 | COLLAR 40 / 16

kult
AUSTRALIA

TOMMY MARR

*Total Look: VERSACE
Hat: STETSON
Jewels: VERSACE
Rings: EMANUELE BICOCCHI*



Harper's
BAZAAR
—WOMEN—
MEN

HEIGHT 188 / 6'2" | CHEST 96 / 38 | WAIST 81 / 32 | HAIR BLONDE | EYES BLUE | SHOES 44 / 10
SUIT 50 / 40 | COLLAR 40 / 16

kult
AUSTRALIA

TOMMY MARR



HEIGHT 188 / 6'2" | CHEST 96 / 38 | WAIST 81 / 32 | HAIR BLONDE | EYES BLUE | SHOES 44 / 10
SUIT 50 / 40 | COLLAR 40 / 16

kult
AUSTRALIA

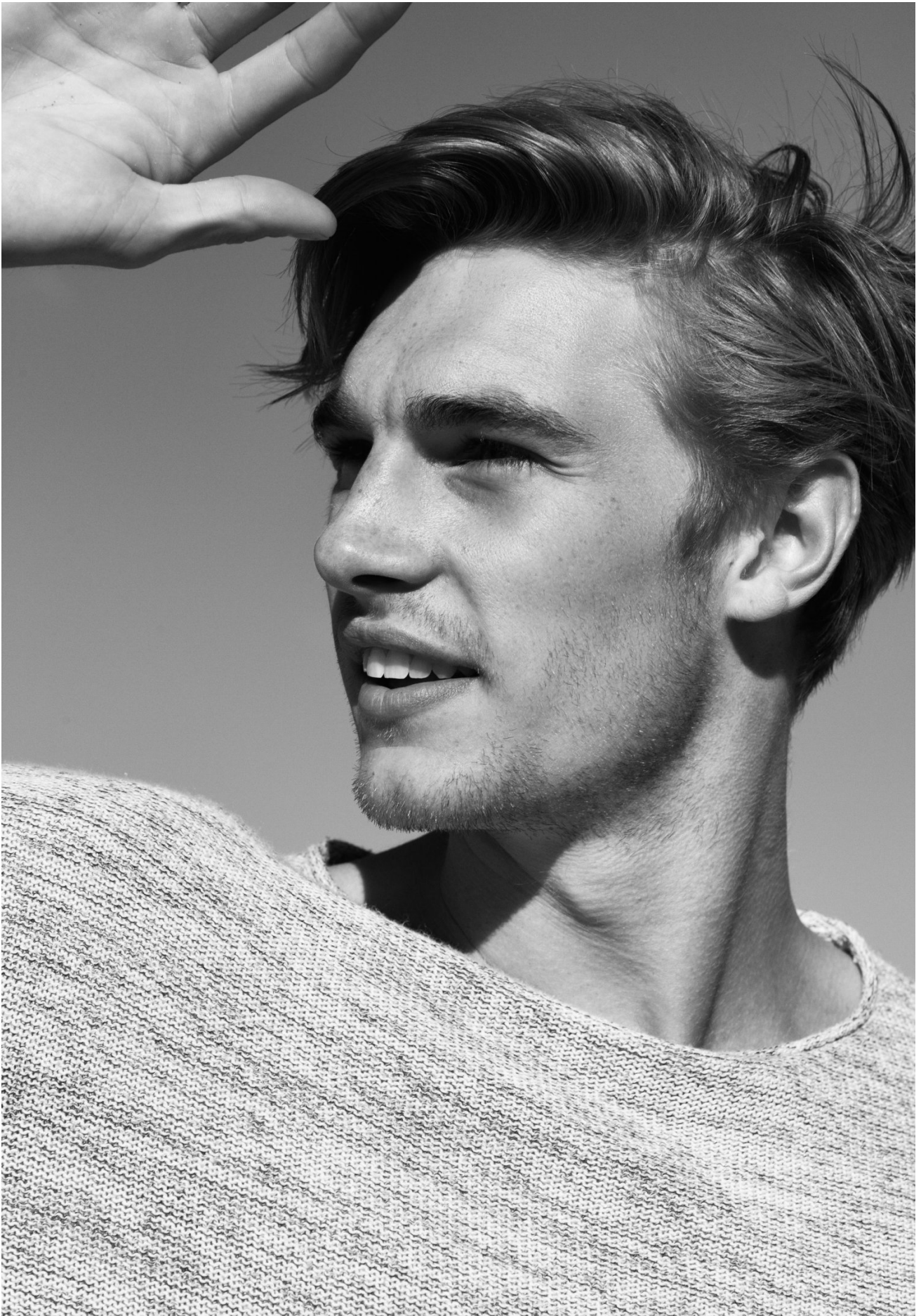
TOMMY MARR



HEIGHT 188 / 6'2" | CHEST 96 / 38 | WAIST 81 / 32 | HAIR BLONDE | EYES BLUE | SHOES 44 / 10
SUIT 50 / 40 | COLLAR 40 / 16

kult
AUSTRALIA

TOMMY MARR



HEIGHT 188 / 6'2" | CHEST 96 / 38 | WAIST 81 / 32 | HAIR BLONDE | EYES BLUE | SHOES 44 / 10
SUIT 50 / 40 | COLLAR 40 / 16

kult
AUSTRALIA

TOMMY MARR



HEIGHT 188 / 6'2" | CHEST 96 / 38 | WAIST 81 / 32 | HAIR BLONDE | EYES BLUE | SHOES 44 / 10
SUIT 50 / 40 | COLLAR 40 / 16

kult
AUSTRALIA

TOMMY MARR



HEIGHT 188 / 6'2" | CHEST 96 / 38 | WAIST 81 / 32 | HAIR BLONDE | EYES BLUE | SHOES 44 / 10
SUIT 50 / 40 | COLLAR 40 / 16

kult
AUSTRALIA

TOMMY MARR



HEIGHT 188 / 6'2" | CHEST 96 / 38 | WAIST 81 / 32 | HAIR BLONDE | EYES BLUE | SHOES 44 / 10
SUIT 50 / 40 | COLLAR 40 / 16

kult
AUSTRALIA

TOMMY MARR

Dolce & Gabbana

As ever, Dolce & Gabbana's inspiration comes from Domenico Dolce's home island of Sicily and the effortless style that can be found in Taormina. Rather than black, this season the duo dabbles in blue, transforming a three-piece from Sunday best to everyday cool.

Jacket, £1,820. Waistcoat, £390. Shirt, £270. Trousers, £640. All by **Dolce & Gabbana**.
dolcegabbana.com



HEIGHT 188 / 6'2" | CHEST 96 / 38 | WAIST 81 / 32 | HAIR BLONDE | EYES BLUE | SHOES 44 / 10
SUIT 50 / 40 | COLLAR 40 / 16

kult
AUSTRALIA

TOMMY MARR



HEIGHT 188 / 6'2" | CHEST 96 / 38 | WAIST 81 / 32 | HAIR BLONDE | EYES BLUE | SHOES 44 / 10
SUIT 50 / 40 | COLLAR 40 / 16

kult
AUSTRALIA

TOMMY MARR

FASHION

Ermenegildo Zegna

Zegna is all about construction and luxury fabrics. Here, new designer Stefano Pilati has pared back the double-breasted suit with just two buttons and accessorised with a scarf.

Jacket, £2,190.
Shirt, £440. Trousers,
£830. Shoes, £460.
Scarf, £190. All by
Ermenegildo Zegna.
zegna.com



MARCH 2014 GQ 273

HEIGHT 188 / 6'2" | CHEST 96 / 38 | WAIST 81 / 32 | HAIR BLONDE | EYES BLUE | SHOES 44 / 10
SUIT 50 / 40 | COLLAR 40 / 16

kult
AUSTRALIA

TOMMY MARR



HEIGHT 188 / 6'2" | CHEST 96 / 38 | WAIST 81 / 32 | HAIR BLONDE | EYES BLUE | SHOES 44 / 10
SUIT 50 / 40 | COLLAR 40 / 16

kult
AUSTRALIA

TOMMY MARR



70749 DAVID-TC

LONG JACKET IN DAVID-TC FILLED WITH THE FINEST DOWN. BEGINNING WITH A STAR-SHAPED POLYESTER / POLYAMIDE SUBSTRATE, GARMENTS IN DAVID-TC ARE SEWN AND THEN SIMULTANEOUSLY GARMENT DYED AND TREATED WITH AN ANTI-DROP AGENT. DURING THE DYE PROCESS, UNDER PRESSURE AT 130°C, THE FABRIC UNDERGOES HEAT-INDUCED COMPRESSION, RADICALLY TRANSFORMING ITS HAND AND BODY. CLOTH LINED COLLAR. CONCEALED HOOD IN RAISED COLLAR. BELLOW POCKETS WITH SNAP FLAP ON FRONT. INSIDE DRAWSTRING AT WAIST. ELASTIC TAPE AT CUFFS. ZIP AND BUTTON FASTENING.


STONE ISLAND
WWW.STONEISLAND

HEIGHT 188 / 6'2" | CHEST 96 / 38 | WAIST 81 / 32 | HAIR BLONDE | EYES BLUE | SHOES 44 / 10

SUIT 50 / 40 | COLLAR 40 / 16

kult
AUSTRALIA

TOMMY MARR



00196 FEATHERWEIGHT LEATHER DOWN
ULTRALIGHT LEATHER DOWN JACKET WITH INSIDE INSULATION IN NYLON TECHNICAL MESH
FILLED WITH THE FINEST DOWN BY DIRECT INJECTION. THE INSULATION IS HEAT SEALED
ALONG THE EXTERNAL LEATHER SEAMS WITH AN ARTISAN TECHNIQUE. COMPLETELY HEAT SEALED.
TWO LARGE POCKETS WITH SNAP FLAP AND ZIPPED SIDE OPENING. ELASTIC TAPE AT CUFFS.
RAISED COLLAR WITH ADJUSTABLE BAND ON THE BACK. SNAP FASTENED.


STONE ISLA
WWW.STONE

HEIGHT 188 / 6'2" | CHEST 96 / 38 | WAIST 81 / 32 | HAIR BLONDE | EYES BLUE | SHOES 44 / 10
SUIT 50 / 40 | COLLAR 40 / 16

kult
AUSTRALIA

TOMMY MARR



male model scene

STYLING MASCHA MOELLER
HEADRESS BULZEYE
JEANS G-STAR

SEPTEMBER 2015
WWW.MALEMODELSCENE.NET

T O M M Y

PHOTO ESTELLE KLAWITTER

HEIGHT 188 / 6'2" | CHEST 96 / 38 | WAIST 81 / 32 | HAIR BLONDE | EYES BLUE | SHOES 44 / 10
SUIT 50 / 40 | COLLAR 40 / 16

kult
AUSTRALIA

TOMMY MARR

83

TOMMY® 2Morrow

Fora con collo in pelliccia.
Pantaloni & camicia: F&F; abito: F&F; Zileri.
Camicia e cravatta: Ermenegildo
Zegna, prezzi su richiesta.

HEIGHT 188 / 6'2" | CHEST 96 / 38 | WAIST 81 / 32 | HAIR BLONDE | EYES BLUE | SHOES 44 / 10
SUIT 50 / 40 | COLLAR 40 / 16

kult
AUSTRALIA

TOMMY MARR

79

TOMMY @ 2Morrow

Giubbotto in tessuto federato,
ATPCO, € 465, maglia Rev. Roger's,
€ 135, camicia Bagutta € 149.

HEIGHT 188 / 6'2" | CHEST 96 / 38 | WAIST 81 / 32 | HAIR BLONDE | EYES BLUE | SHOES 44 / 10
SUIT 50 / 40 | COLLAR 40 / 16

kult
AUSTRALIA

TOMMY MARR



HEIGHT 188 / 6'2" | CHEST 96 / 38 | WAIST 81 / 32 | HAIR BLONDE | EYES BLUE | SHOES 44 / 10
SUIT 50 / 40 | COLLAR 40 / 16

kult
AUSTRALIA

TOMMY MARR



HEIGHT 188 / 6'2" | CHEST 96 / 38 | WAIST 81 / 32 | HAIR BLONDE | EYES BLUE | SHOES 44 / 10
SUIT 50 / 40 | COLLAR 40 / 16

kult
AUSTRALIA

TOMMY MARR



HEIGHT 188 / 6'2" | CHEST 96 / 38 | WAIST 81 / 32 | HAIR BLONDE | EYES BLUE | SHOES 44 / 10
SUIT 50 / 40 | COLLAR 40 / 16

kult
AUSTRALIA

TOMMY MARR



HEIGHT 188 / 6'2" | CHEST 96 / 38 | WAIST 81 / 32 | HAIR BLONDE | EYES BLUE | SHOES 44 / 10
SUIT 50 / 40 | COLLAR 40 / 16

kult
AUSTRALIA

TOMMY MARR



HEIGHT 188 / 6'2" | CHEST 96 / 38 | WAIST 81 / 32 | HAIR BLONDE | EYES BLUE | SHOES 44 / 10
SUIT 50 / 40 | COLLAR 40 / 16

kult
AUSTRALIA