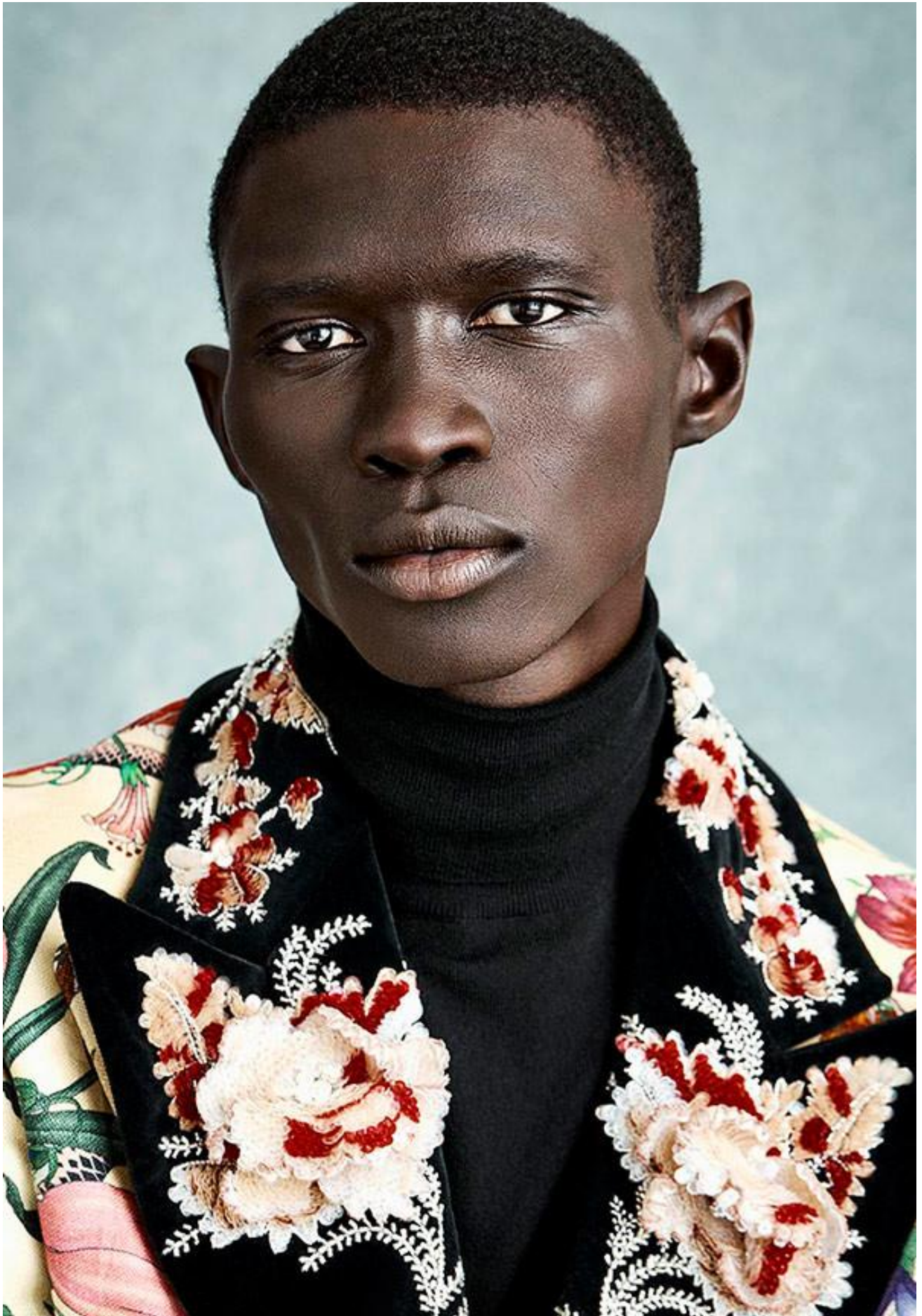


FERNANDO CABRAL



HEIGHT 188 / 6'2" | CHEST 97 / 38 | WAIST 79 / 31 | HAIR DARK BROWN | EYES BROWN | SHOES 45 / 11
SUIT 48 / 38 | COLLAR 38 / 15

kult
AUSTRALIA

FERNANDO CABRAL



HEIGHT 188 / 6'2" | CHEST 97 / 38 | WAIST 79 / 31 | HAIR DARK BROWN | EYES BROWN | SHOES 45 / 11
SUIT 48 / 38 | COLLAR 38 / 15

kult
AUSTRALIA

FERNANDO CABRAL



A. SAUVAGE

HEIGHT 188 / 6'2" | CHEST 97 / 38 | WAIST 79 / 31 | HAIR DARK BROWN | EYES BROWN | SHOES 45 / 11
SUIT 48 / 38 | COLLAR 38 / 15

kult
AUSTRALIA

FERNANDO CABRAL



HEIGHT 188 / 6'2" | CHEST 97 / 38 | WAIST 79 / 31 | HAIR DARK BROWN | EYES BROWN | SHOES 45 / 11
SUIT 48 / 38 | COLLAR 38 / 15

kult
AUSTRALIA

FERNANDO CABRAL



HEIGHT 188 / 6'2" | CHEST 97 / 38 | WAIST 79 / 31 | HAIR DARK BROWN | EYES BROWN | SHOES 45 / 11
SUIT 48 / 38 | COLLAR 38 / 15

kult
AUSTRALIA

FERNANDO CABRAL

VOGUE

PORTUGAL



W O R D S

HEIGHT 188 / 6'2" | CHEST 97 / 38 | WAIST 79 / 31 | HAIR DARK BROWN | EYES BROWN | SHOES 45 / 11
SUIT 48 / 38 | COLLAR 38 / 15

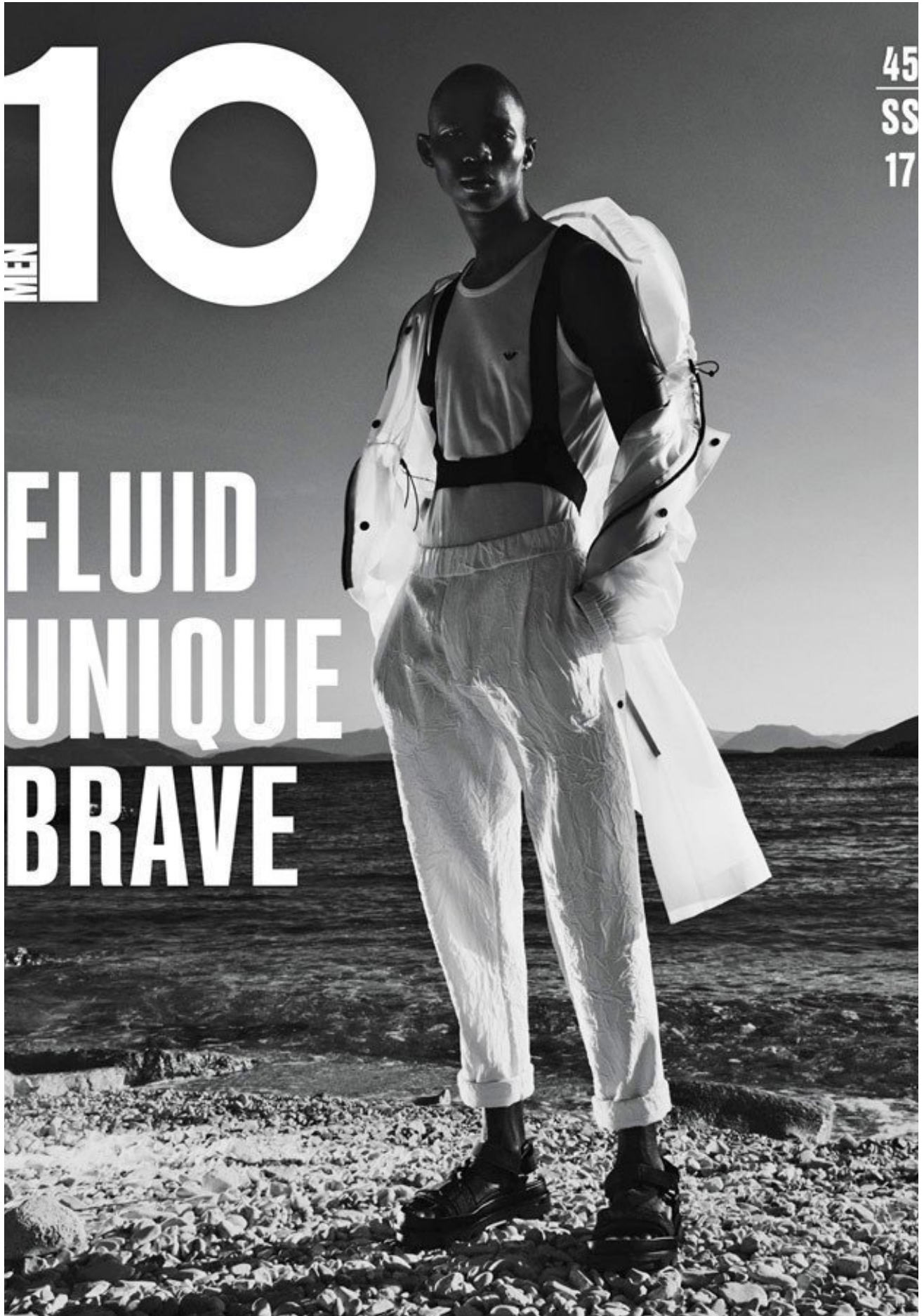
kult
AUSTRALIA

FERNANDO CABRAL

45
SS
17

MEN 10

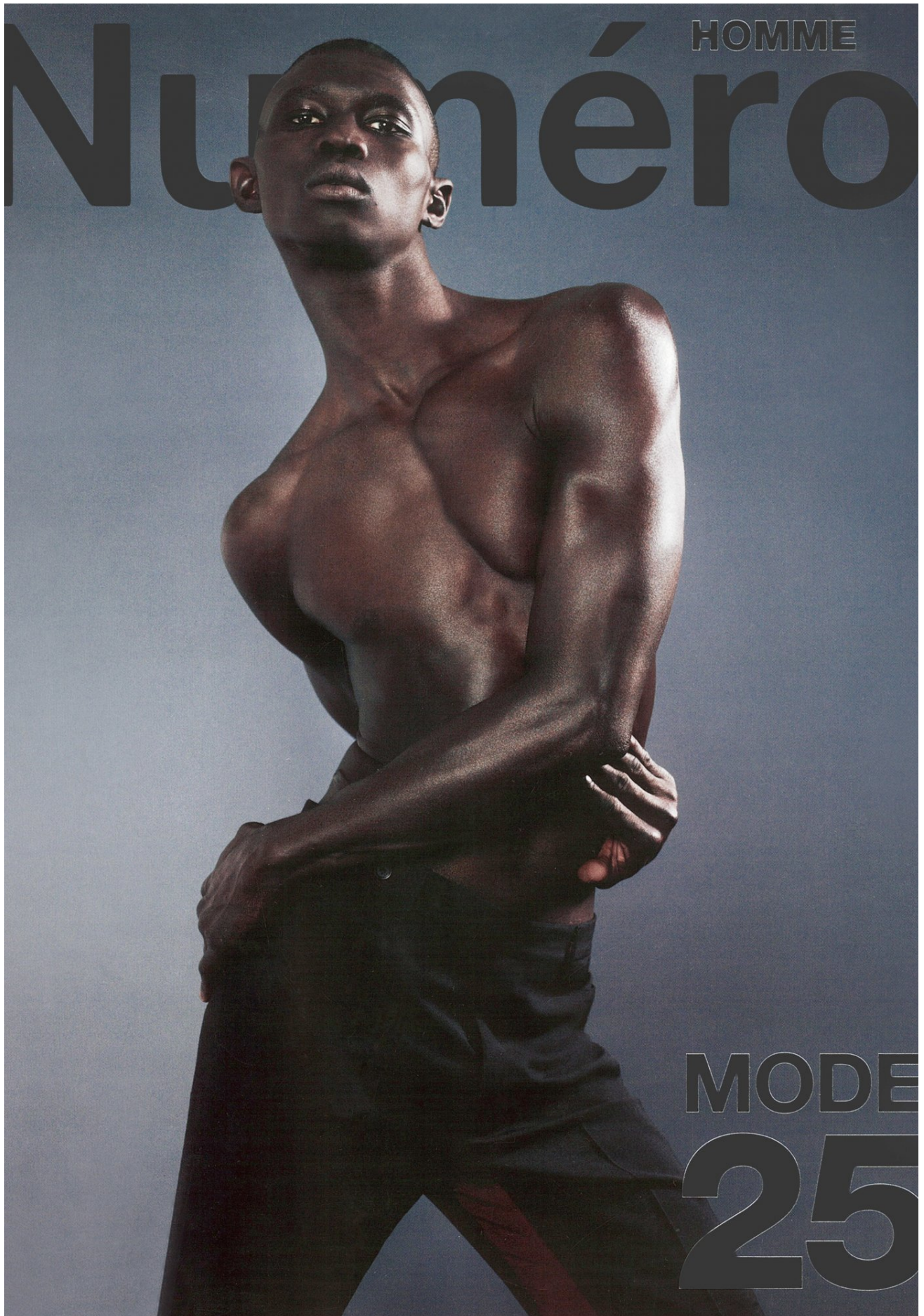
FLUID
UNIQUE
BRAVE



HEIGHT 188 / 6'2" | CHEST 97 / 38 | WAIST 79 / 31 | HAIR DARK BROWN | EYES BROWN | SHOES 45 / 11
SUIT 48 / 38 | COLLAR 38 / 15

kult
AUSTRALIA

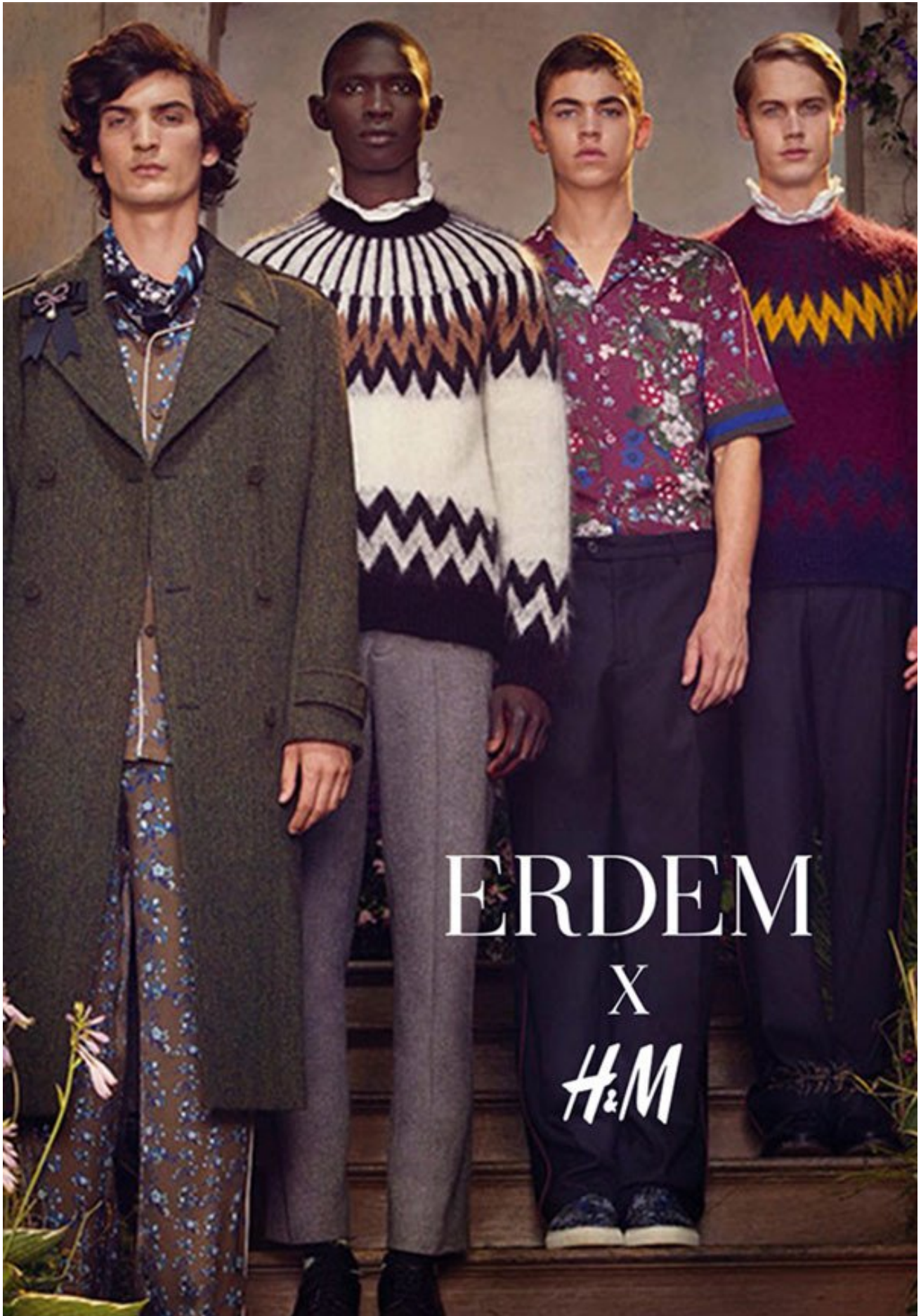
FERNANDO CABRAL



HEIGHT 188 / 6'2" | CHEST 97 / 38 | WAIST 79 / 31 | HAIR DARK BROWN | EYES BROWN | SHOES 45 / 11
SUIT 48 / 38 | COLLAR 38 / 15

kult
AUSTRALIA

FERNANDO CABRAL



HEIGHT 188 / 6'2" | CHEST 97 / 38 | WAIST 79 / 31 | HAIR DARK BROWN | EYES BROWN | SHOES 45 / 11
SUIT 48 / 38 | COLLAR 38 / 15

kult
AUSTRALIA

FERNANDO CABRAL



TOM FORD

HEIGHT 188 / 6'2" | CHEST 97 / 38 | WAIST 79 / 31 | HAIR DARK BROWN | EYES BROWN | SHOES 45 / 11
SUIT 48 / 38 | COLLAR 38 / 15

kult
AUSTRALIA

FERNANDO CABRAL



MODELO: FERNANDO CABRAL (UNO MODELS) MAQUILLAJE Y PELUQUERÍA: TRAVISEAN HAYNES ASISTENTE DE ESTILISMO: ANAIS IBÁÑEZ PRODUCCIÓN: GABRIELA ARANZABAL

En esta página: camisa de **Bally** y pantalón de **BOSS**.
En la página siguiente: camiseta de **Canali** y pantalón de **Lanvin**.

FERNANDO CABRAL



En la página anterior, camisa de **Valentino** y pantalón de **Cerruti 1881**. En esta página: camiseta de **Cerruti 1881**, polo y pantalón de **BOSS** y zapatos de **Prada**.

FERNANDO CABRAL



En esta página, sudadera de **Ralph Lauren** y pantalón de **Bally**.
En la página siguiente: camisa de **Salvatore Ferragamo**, pantalón de **Ralph Lauren** y zapatos de **BOSS**.

FERNANDO CABRAL



HEIGHT 188 / 6'2" | CHEST 97 / 38 | WAIST 79 / 31 | HAIR DARK BROWN | EYES BROWN | SHOES 45 / 11
SUIT 48 / 38 | COLLAR 38 / 15

kult
AUSTRALIA

FERNANDO CABRAL



ANHE UMA PS4 PRO | ENTREVISTAS | MUSA | REPORTAGEM | ESPECIAL RELÓGIO

PORTUGAL

EDIC. ESPECIAL
GQ
MEN OF THE YEAR AWARDS
2016

GENTLEMEN'S QUARTERLY

OS HOMENS DO ANO

CAMERON DALLAS • FERNANDO CABRAL • JASON MORGAN • VALTER HUGO MÃE
GUEL ROCHA VIEIRA • THE GIFT • FRANCISCO VIEIRA DE CAMPOS • HENRIQUE VEIGA FERNANDES
JOÃO RIBEIRO • LUÍS CARVALHO • MONIZ PEREIRA • LENINE CUNHA

E AINDA AS MULHERES
MARIA DA CONCEIÇÃO • ANDREJA PEJIC • MARIA CLARA

NOV. | 2016 | €3,50 CONT.



HEIGHT 188 / 6'2" | CHEST 97 / 38 | WAIST 79 / 31 | HAIR DARK BROWN | EYES BROWN | SHOES 45 / 11
SUIT 48 / 38 | COLLAR 38 / 15

kult
AUSTRALIA

FERNANDO CABRAL

DAPPER

Issue 13

DAN

Men's Fashion & Philosophy
Spring/Summer 2016



HEIGHT 188 / 6'2" | CHEST 97 / 38 | WAIST 79 / 31 | HAIR DARK BROWN | EYES BROWN | SHOES 45 / 11
SUIT 48 / 38 | COLLAR 38 / 15

kult
AUSTRALIA

FERNANDO CABRAL



HEIGHT 188 / 6'2" | CHEST 97 / 38 | WAIST 79 / 31 | HAIR DARK BROWN | EYES BROWN | SHOES 45 / 11
SUIT 48 / 38 | COLLAR 38 / 15

kult
AUSTRALIA

FERNANDO CABRAL



HEIGHT 188 / 6'2" | CHEST 97 / 38 | WAIST 79 / 31 | HAIR DARK BROWN | EYES BROWN | SHOES 45 / 11
SUIT 48 / 38 | COLLAR 38 / 15

kult
AUSTRALIA

FERNANDO CABRAL



HEIGHT 188 / 6'2" | CHEST 97 / 38 | WAIST 79 / 31 | HAIR DARK BROWN | EYES BROWN | SHOES 45 / 11
SUIT 48 / 38 | COLLAR 38 / 15

kult
AUSTRALIA

FERNANDO CABRAL



HEIGHT 188 / 6'2" | CHEST 97 / 38 | WAIST 79 / 31 | HAIR DARK BROWN | EYES BROWN | SHOES 45 / 11
SUIT 48 / 38 | COLLAR 38 / 15

kult
AUSTRALIA

FERNANDO CABRAL



Chaqueta *bomber* de seda SAINT LAURENT BY HEDI SLIMANE. Bañador negro VILEBREQUIN.

HEIGHT 188 / 6'2" | CHEST 97 / 38 | WAIST 79 / 31 | HAIR DARK BROWN | EYES BROWN | SHOES 45 / 11
SUIT 48 / 38 | COLLAR 38 / 15

kult
AUSTRALIA

FERNANDO CABRAL

Chaqueta de algodón y pantalones fluidos ERMENEGILDO ZEGNA
COUTURE. Camisa de satén PRADA.



HEIGHT 188 / 6'2" | CHEST 97 / 38 | WAIST 79 / 31 | HAIR DARK BROWN | EYES BROWN | SHOES 45 / 11
SUIT 48 / 38 | COLLAR 38 / 15

kult
AUSTRALIA

FERNANDO CABRAL



HEIGHT 188 / 6'2" | CHEST 97 / 38 | WAIST 79 / 31 | HAIR DARK BROWN | EYES BROWN | SHOES 45 / 11
SUIT 48 / 38 | COLLAR 38 / 15

kult
AUSTRALIA

FERNANDO CABRAL

Producción: Joanna Rivera, Producción local: Julio Rodríguez y Nelson Rodríguez (Ventura Films).
Asistente de fotografía: Camilo Germain, Asistente de fotografía y técnico digital: Jorge Noneli, Asistente de estilismo: Juan Luis Ascanio, Modelo: Fernando Cabral (Uno Models).



Pantalones, camiseta vaquera con *prints* rojizos y zapatos de charol J. W. ANDERSON.

HEIGHT 188 / 6'2" | CHEST 97 / 38 | WAIST 79 / 31 | HAIR DARK BROWN | EYES BROWN | SHOES 45 / 11
SUIT 48 / 38 | COLLAR 38 / 15

kult
AUSTRALIA

FERNANDO CABRAL



HEIGHT 188 / 6'2" | CHEST 97 / 38 | WAIST 79 / 31 | HAIR DARK BROWN | EYES BROWN | SHOES 45 / 11
SUIT 48 / 38 | COLLAR 38 / 15

kult
AUSTRALIA

FERNANDO CABRAL



HEIGHT 188 / 6'2" | CHEST 97 / 38 | WAIST 79 / 31 | HAIR DARK BROWN | EYES BROWN | SHOES 45 / 11
SUIT 48 / 38 | COLLAR 38 / 15

kult
AUSTRALIA

FERNANDO CABRAL



HEIGHT 188 / 6'2" | CHEST 97 / 38 | WAIST 79 / 31 | HAIR DARK BROWN | EYES BROWN | SHOES 45 / 11
SUIT 48 / 38 | COLLAR 38 / 15

kult
AUSTRALIA

FERNANDO CABRAL



Traje de chaqueta negro Boss. Camisa de seda con lazada Gucci.

HEIGHT 188 / 6'2" | CHEST 97 / 38 | WAIST 79 / 31 | HAIR DARK BROWN | EYES BROWN | SHOES 45 / 11
SUIT 48 / 38 | COLLAR 38 / 15

kult
AUSTRALIA