

# MARIANO ONTANON



HEIGHT 186 / 6'1.5" | CHEST 98 / 38.5 | WAIST 81 / 32 | HAIR BROWN | EYES HAZEL | SHOES 44.5 / 10.5  
SUIT 50 / 40 | COLLAR 40 / 16

kult  
AUSTRALIA

MARIANO ONTANON

# BAZAAR

Harper's

MARIANO  
ONTANON  
ka i kaput  
nanno  
ervino

GARDA  
MUŠKOG  
STILA

*Svetski top-modeli  
nose ključne  
komade za jesen*

*Fotografije: Adriano Russo  
Stilista: Ivan Rašić*

HEIGHT 186 / 6'1.5" | CHEST 98 / 38.5 | WAIST 81 / 32 | HAIR BROWN | EYES HAZEL | SHOES 44.5 / 10.5  
SUIT 50 / 40 | COLLAR 40 / 16

kult  
AUSTRALIA

# MARIANO ONTANON



COLECCIONES

**D O L C E & G A B B A N A**

HEIGHT 186 / 6'1.5" | CHEST 98 / 38.5 | WAIST 81 / 32 | HAIR BROWN | EYES HAZEL | SHOES 44.5 / 10.5  
SUIT 50 / 40 | COLLAR 40 / 16

kult  
AUSTRALIA

# MARIANO ONTANON



COLECCIONES

ERMENEGILDO  
ZEGNA COUTURE

HEIGHT 186 / 6'1.5" | CHEST 98 / 38.5 | WAIST 81 / 32 | HAIR BROWN | EYES HAZEL | SHOES 44.5 / 10.5  
SUIT 50 / 40 | COLLAR 40 / 16

kult  
AUSTRALIA

# MARIANO ONTANON

Meet the new  
**brief BOXER,**  
the comfort of  
a boxer with  
the trim fit of  
a boxer brief.

VERY PERRY ELLIS



*it's what's underneath that counts*

HEIGHT 186 / 6'1.5" | CHEST 98 / 38.5 | WAIST 81 / 32 | HAIR BROWN | EYES HAZEL | SHOES 44.5 / 10.5  
SUIT 50 / 40 | COLLAR 40 / 16

kult  
AUSTRALIA

MARIANO ONTANON



HEIGHT 186 / 6'1.5" | CHEST 98 / 38.5 | WAIST 81 / 32 | HAIR BROWN | EYES HAZEL | SHOES 44.5 / 10.5  
SUIT 50 / 40 | COLLAR 40 / 16

kult  
AUSTRALIA

MARIANO ONTANON

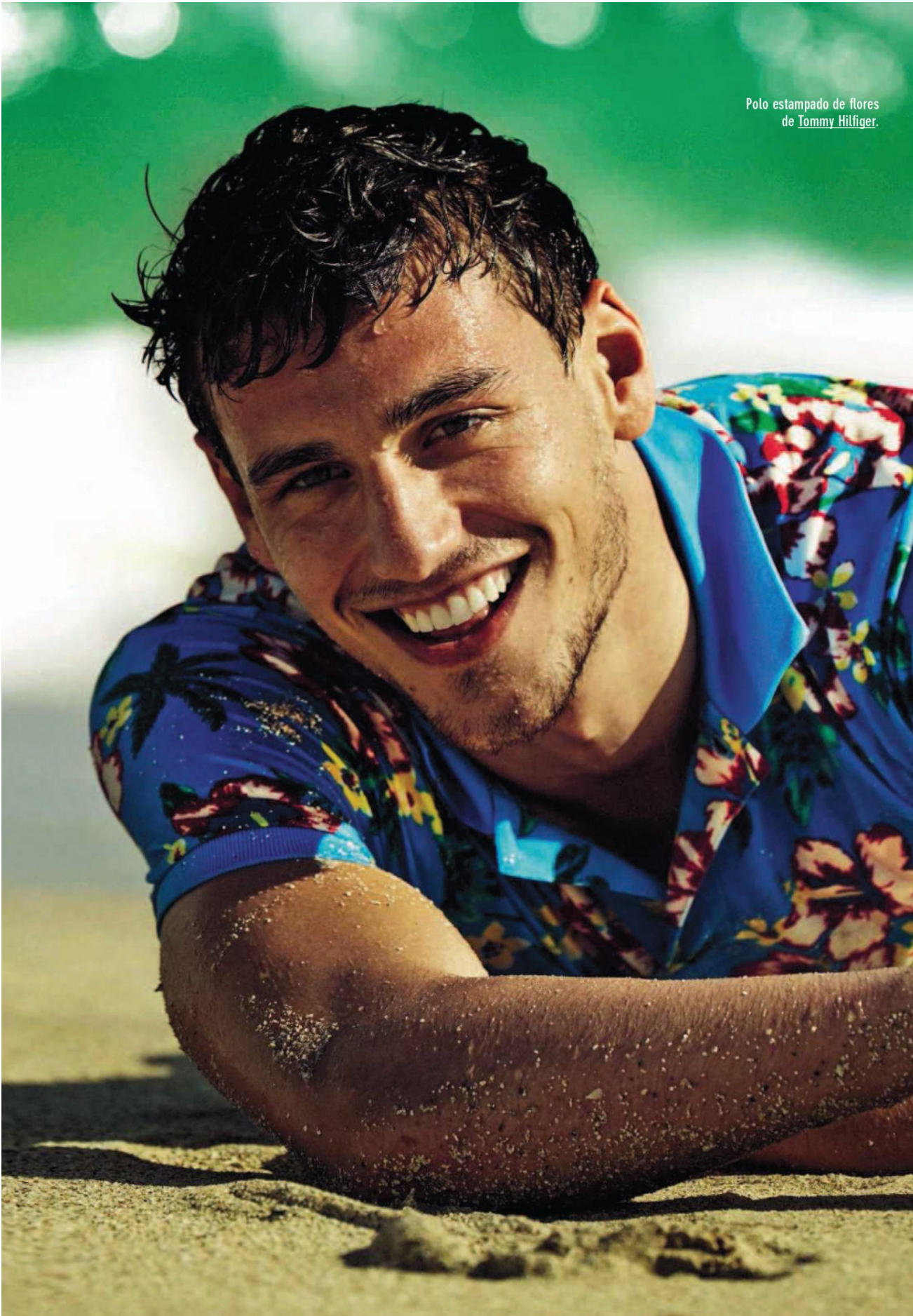


Just cavalli  
BEACHWEAR

HEIGHT 186 / 6'1.5" | CHEST 98 / 38.5 | WAIST 81 / 32 | HAIR BROWN | EYES HAZEL | SHOES 44.5 / 10.5  
SUIT 50 / 40 | COLLAR 40 / 16

kult  
AUSTRALIA

# MARIANO ONTANON



Polo estampado de flores  
de Tommy Hilfiger.

HEIGHT 186 / 6'1.5" | CHEST 98 / 38.5 | WAIST 81 / 32 | HAIR BROWN | EYES HAZEL | SHOES 44.5 / 10.5  
SUIT 50 / 40 | COLLAR 40 / 16

kult  
AUSTRALIA



# MARIANO ONTANON

Camisa de seda estampada  
de Versus y vaqueros de Replay.



HEIGHT 186 / 6'1.5" | CHEST 98 / 38.5 | WAIST 81 / 32 | HAIR BROWN | EYES HAZEL | SHOES 44.5 / 10.5  
SUIT 50 / 40 | COLLAR 40 / 16

kult  
AUSTRALIA

MARIANO ONTANON



# SEVENTH MAN

BIANNUAL MEN'S FASHION



£8.50  
PRINTED IN THE UK  
ISSUE 7 SPRING/SUMMER 2014  
www.seventhmanmagazine.com

HEIGHT 186 / 6'1.5" | CHEST 98 / 38.5 | WAIST 81 / 32 | HAIR BROWN | EYES HAZEL | SHOES 44.5 / 10.5  
SUIT 50 / 40 | COLLAR 40 / 16

kult  
AUSTRALIA

MARIANO ONTANON

# REFLEX

HOMME

SEPTEMBER 2014  
REFLEX HOMME  
BUENOS AIRES  
ARGENTINA  
www.reflexmag.com.ar

*Mariano Ontanon*

FRANCISCO LACHOWSKI - RODRIGO GUIRAO - BAFWEEK  
FASHION EDITORIAL FILM - A SCARECROW STORY - PREPPY LOOKS

HEIGHT 186 / 6'1.5" | CHEST 98 / 38.5 | WAIST 81 / 32 | HAIR BROWN | EYES HAZEL | SHOES 44.5 / 10.5  
SUIT 50 / 40 | COLLAR 40 / 16

kult  
AUSTRALIA

# MARIANO ONTANON

## MISS VOGUE



Débardeur en soie, 320 €, et short en Nylon, 95 €, GOLDEN GOOSE DELUXE BRAND. Débardeur en résille de coton, HÔTEL PARTICULIER, 125 €. Sac à dos, 55 €, chaussettes et bracelet en coton, AMERICAN APPAREL. Boucle d'oreille en métal émaillé, ALEXIS BITTAR. Page de droite, parka en tissu technique stretch, HIGH, 689 €. T-shirt en résille de coton, SANDRO, 125 €. Short en coton, LACOSTE, 80 €. Brassière en coton stretch, NIKE, 20 €. Bracelet en éponge, chaussettes en coton, et bretelles élastiques, AMERICAN APPAREL.

VOGUE 158

HEIGHT 186 / 6'1.5" | CHEST 98 / 38.5 | WAIST 81 / 32 | HAIR BROWN | EYES HAZEL | SHOES 44.5 / 10.5  
SUIT 50 / 40 | COLLAR 40 / 16

kult  
AUSTRALIA

# MARIANO ONTANON



Maxi-robe débardeur en organza rayures satin, 680 € et, noué à la taille, mini-bomber capuché en cuir, IRFÉ, T-shirt, 90 €, et culotte, 80 €, en Seuba et Lyera, IRIÉ. Bracelet en éponge, AMERICAN APPAREL. Ciseaux en métal émaillé, ALEXIS BITTAR. Page de gauche, robe débardeur en soie, TOMMY HILFINGER COLLECTION, 389 €. Bandeau cheveux et bracelet en éponge, chaussettes en coton, AMERICAN APPAREL. Tennis montantes en cuir, KATIE GRAND LOVES HOGAN, 475 €. Les garçons portent la tenue des Dallas Cowboys Football Club.

HEIGHT 186 / 6'1.5" | CHEST 98 / 38.5 | WAIST 81 / 32 | HAIR BROWN | EYES HAZEL | SHOES 44.5 / 10.5  
SUIT 50 / 40 | COLLAR 40 / 16

kult  
AUSTRALIA

# MARIANO ONTANON



外套、長褲  
from Fendi  
袖衫  
from Prada  
皮鞋  
from BOSS Men

HEIGHT 186 / 6'1.5" | CHEST 98 / 38.5 | WAIST 81 / 32 | HAIR BROWN | EYES HAZEL | SHOES 44.5 / 10.5  
SUIT 50 / 40 | COLLAR 40 / 16

kult  
AUSTRALIA

# MARIANO ONTANON



圖案外套  
from **Giorgio Armani**  
襪衫  
from **Givenchy**  
長褲  
from **Fendi**

HEIGHT 186 / 6'1.5" | CHEST 98 / 38.5 | WAIST 81 / 32 | HAIR BROWN | EYES HAZEL | SHOES 44.5 / 10.5  
SUIT 50 / 40 | COLLAR 40 / 16

kult  
AUSTRALIA

# MARIANO ONTANON

## MEET OUR BUDDY MARIANO

looks so good in his own suit that we asked him to wear these clothes in the rest of the issue, too. Watch him closely and copy his moves.



### Gotta Be... Which Shoes, Exactly?

Don't worry, dress shoes in any color will work with this suit. One bulletproof strategy is to go down from head to toe.

Ralph Lauren: \$4,995

tie, and pocket square  
Ralph Lauren  
> Louis Vuitton  
bags J.Crew Ludlow

HEIGHT 186 / 6'1.5" | CHEST 98 / 38.5 | WAIST 81 / 32 | HAIR BROWN | EYES HAZEL | SHOES 44.5 / 10.5  
SUIT 50 / 40 | COLLAR 40 / 16

kult  
AUSTRALIA



# MARIANO ONTANON

**You Know  
Way to  
Ant-Tropez?**  
White pants are  
perfect for vacation—  
the same trip where  
you're breaking  
out your new fedora.

White pants: Brunello  
Cucinelli: \$595

Brown jacket, shirt,  
pocket square:  
Brunello Cucinelli  
Blue shirt:  
Timex  
Fedora:  
Lock & Co. Hatters

Remember  
this equation:  
Brown plus blue  
(and some white  
too) equals  
timeless style.

White  
can look a  
little flat, so  
add texture with  
a denim shirt,  
a plaid jacket,  
and burnished  
shoes.

You won't look  
like a try-hard  
if you crop your  
hems and slip  
into your favorite  
invisible socks.

**23**

**GQ STYLE**  
P.155



HEIGHT 186 / 6'1.5" | CHEST 98 / 38.5 | WAIST 81 / 32 | HAIR BROWN | EYES HAZEL | SHOES 44.5 / 10.5  
SUIT 50 / 40 | COLLAR 40 / 16

kult  
AUSTRALIA

# MARIANO ONTANON

## You Never For Your First Ti

Never tried this m  
before? It's easy  
the cold, you wear lo  
sleeve shirts un  
long-sleeve sweat  
and in the h  
you do likewise v  
short slee

Top: \$

Shirt: \$

Pants: \$

Public Sch

Today's  
designers  
make clothes  
that are meant to  
be layered. Which is  
why short-sleeve  
sweatshirts  
now exist.

If your  
under-layer  
is too long,  
you'll look like  
you're wearing a  
nightshirt. A few  
inches is the  
sweet spot.

14

GQ STYLE  
P.112



HEIGHT 186 / 6'1.5" | CHEST 98 / 38.5 | WAIST 81 / 32 | HAIR BROWN | EYES HAZEL | SHOES 44.5 / 10.5

SUIT 50 / 40 | COLLAR 40 / 16

kult  
AUSTRALIA

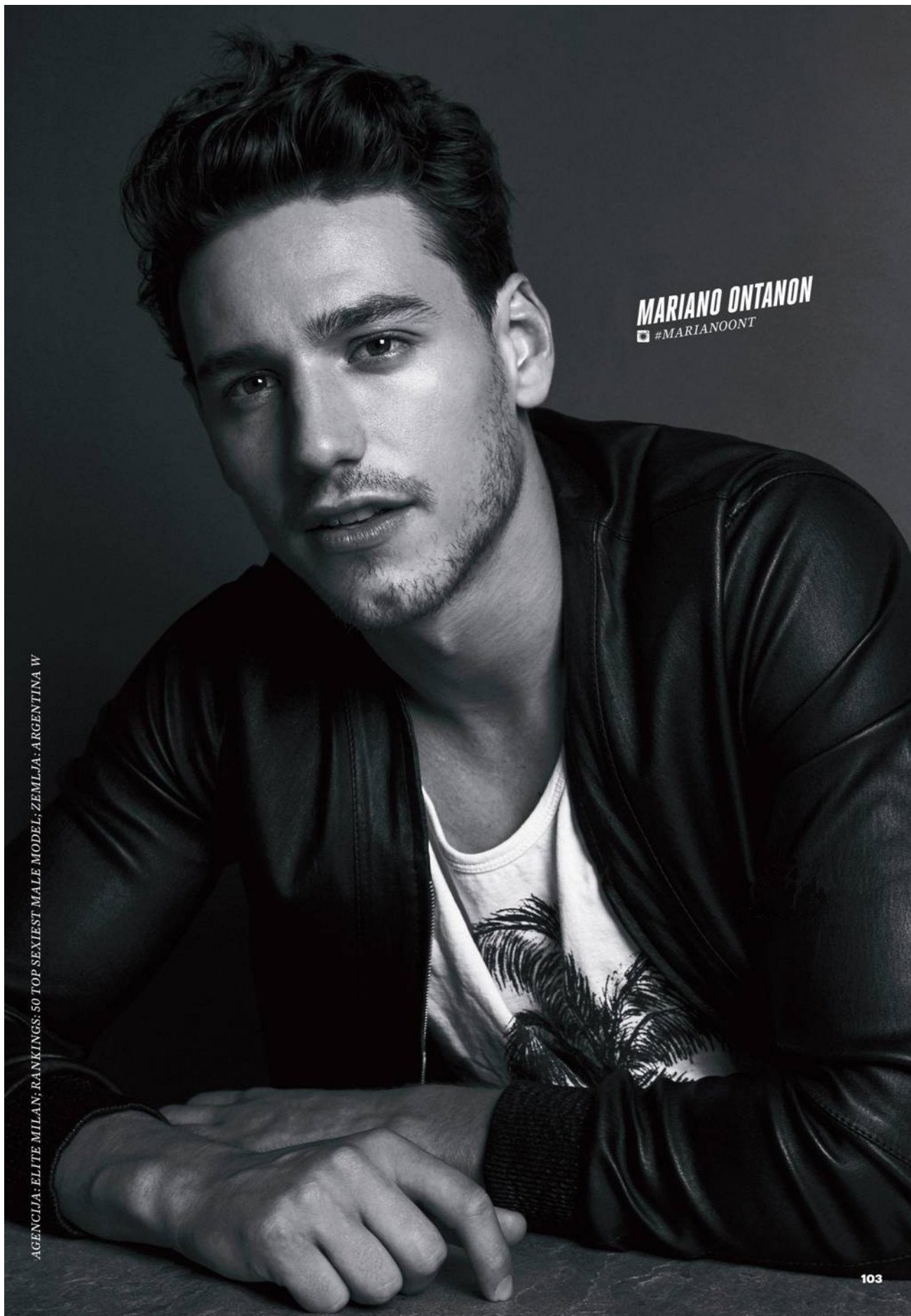
# MARIANO ONTANON



HEIGHT 186 / 6'1.5" | CHEST 98 / 38.5 | WAIST 81 / 32 | HAIR BROWN | EYES HAZEL | SHOES 44.5 / 10.5  
SUIT 50 / 40 | COLLAR 40 / 16

kult  
AUSTRALIA

# MARIANO ONTANON



**MARIANO ONTANON**  
#MARIANOONT

AGENCIA: ELITE MILAN; RANKINGS: 50 TOP SEXIEST MALE MODEL; ZEMLJA: ARGENTINA W

103

HEIGHT 186 / 6'1.5" | CHEST 98 / 38.5 | WAIST 81 / 32 | HAIR BROWN | EYES HAZEL | SHOES 44.5 / 10.5  
SUIT 50 / 40 | COLLAR 40 / 16

**kult**  
AUSTRALIA

# MARIANO ONTANON

Jaqueta **Moncler** |  
Calça **Gucci**



FEVEREIRO 2017 || GQ || 103

HEIGHT 186 / 6'1.5" | CHEST 98 / 38.5 | WAIST 81 / 32 | HAIR BROWN | EYES HAZEL | SHOES 44.5 / 10.5  
SUIT 50 / 40 | COLLAR 40 / 16

kult  
AUSTRALIA

# MARIANO ONTANON

MODA



Suéter **Versace** |  
Calça **Gucci**

104 || **GG** || FEVEREIRO 2017

HEIGHT 186 / 6'1.5" | CHEST 98 / 38.5 | WAIST 81 / 32 | HAIR BROWN | EYES HAZEL | SHOES 44.5 / 10.5  
SUIT 50 / 40 | COLLAR 40 / 16

kult  
AUSTRALIA

# MARIANO ONTANON



HEIGHT 186 / 6'1.5" | CHEST 98 / 38.5 | WAIST 81 / 32 | HAIR BROWN | EYES HAZEL | SHOES 44.5 / 10.5  
SUIT 50 / 40 | COLLAR 40 / 16

kult  
AUSTRALIA

# MARIANO ONTANON



GUCCI

HEIGHT 186 / 6'1.5" | CHEST 98 / 38.5 | WAIST 81 / 32 | HAIR BROWN | EYES HAZEL | SHOES 44.5 / 10.5  
SUIT 50 / 40 | COLLAR 40 / 16

kult  
AUSTRALIA



# MARIANO ONTANON



HEIGHT 186 / 6'1.5" | CHEST 98 / 38.5 | WAIST 81 / 32 | HAIR BROWN | EYES HAZEL | SHOES 44.5 / 10.5  
SUIT 50 / 40 | COLLAR 40 / 16

kult  
AUSTRALIA

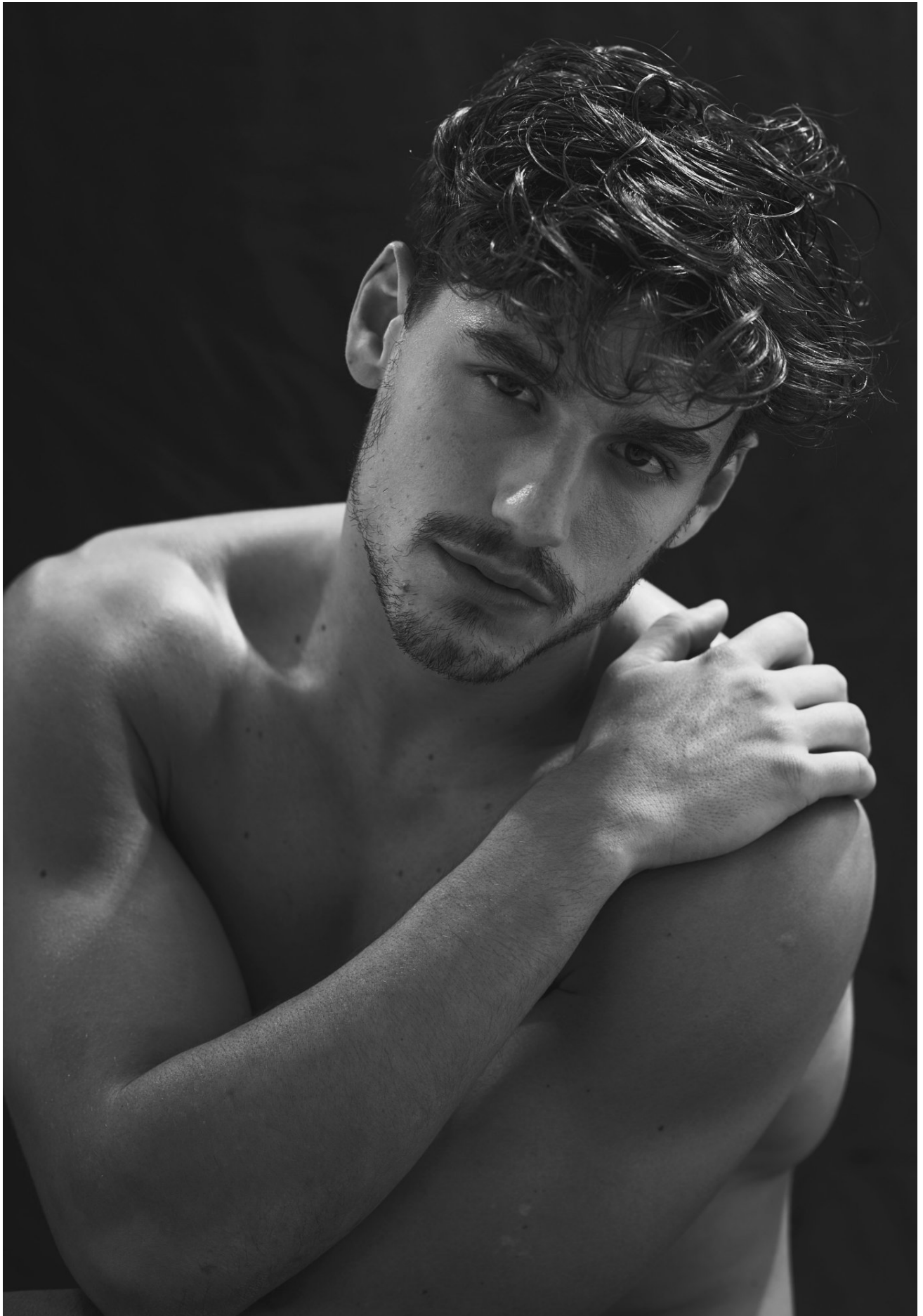
# MARIANO ONTANON



HEIGHT 186 / 6'1.5" | CHEST 98 / 38.5 | WAIST 81 / 32 | HAIR BROWN | EYES HAZEL | SHOES 44.5 / 10.5  
SUIT 50 / 40 | COLLAR 40 / 16

kult  
AUSTRALIA

# MARIANO ONTANON



HEIGHT 186 / 6'1.5" | CHEST 98 / 38.5 | WAIST 81 / 32 | HAIR BROWN | EYES HAZEL | SHOES 44.5 / 10.5  
SUIT 50 / 40 | COLLAR 40 / 16

kult  
AUSTRALIA